

Schedule a Tour
206-467-7600



MARTIN SELIG
REAL ESTATE

FOR LEASE

AVAILABLE SPRING 2019



Martin Selig
mselig@martinselig.com



Jordan Selig
jselig@martinselig.com



Theresa Howard
thoward@martinselig.com



Mike Brixner
mbrixner@martinselig.com



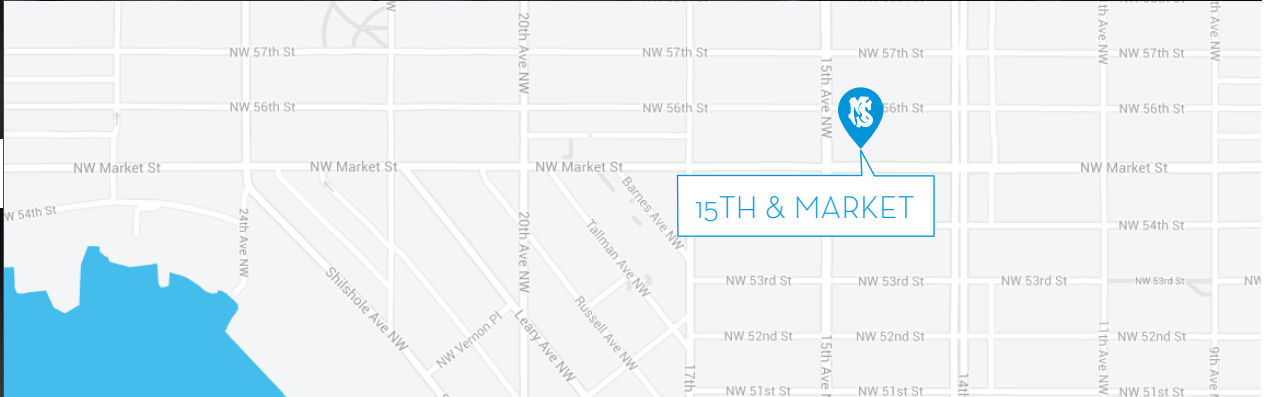
Ilich Vahimi
ivahimi@martinselig.com



Michael Brixner
mcbrixner@martinselig.com



David Selig
dselig@martinselig.com



Building Features:

- Custom build-outs available
- Underground parking
- Pet-Friendly
- Bike Storage

Neighborhood Features:

- Numerous transit options
- Excellent bike commuting via nearby Burke-Gilman Trail
- Walking distance to restaurants and shops of Ballard Avenue
- Steps to supermarkets (Safeway, Trader Joe's, Ballard Market)

Available Square Footage: 52,985

15TH & MARKET

1448 NW MARKET ST
Seattle, WA 98107

CALL US TO SCHEDULE A TOUR | 206-467-7600 | martinselig.com

Schedule a Tour
206-467-7600



MARTIN SELIG
REAL ESTATE

FOR LEASE

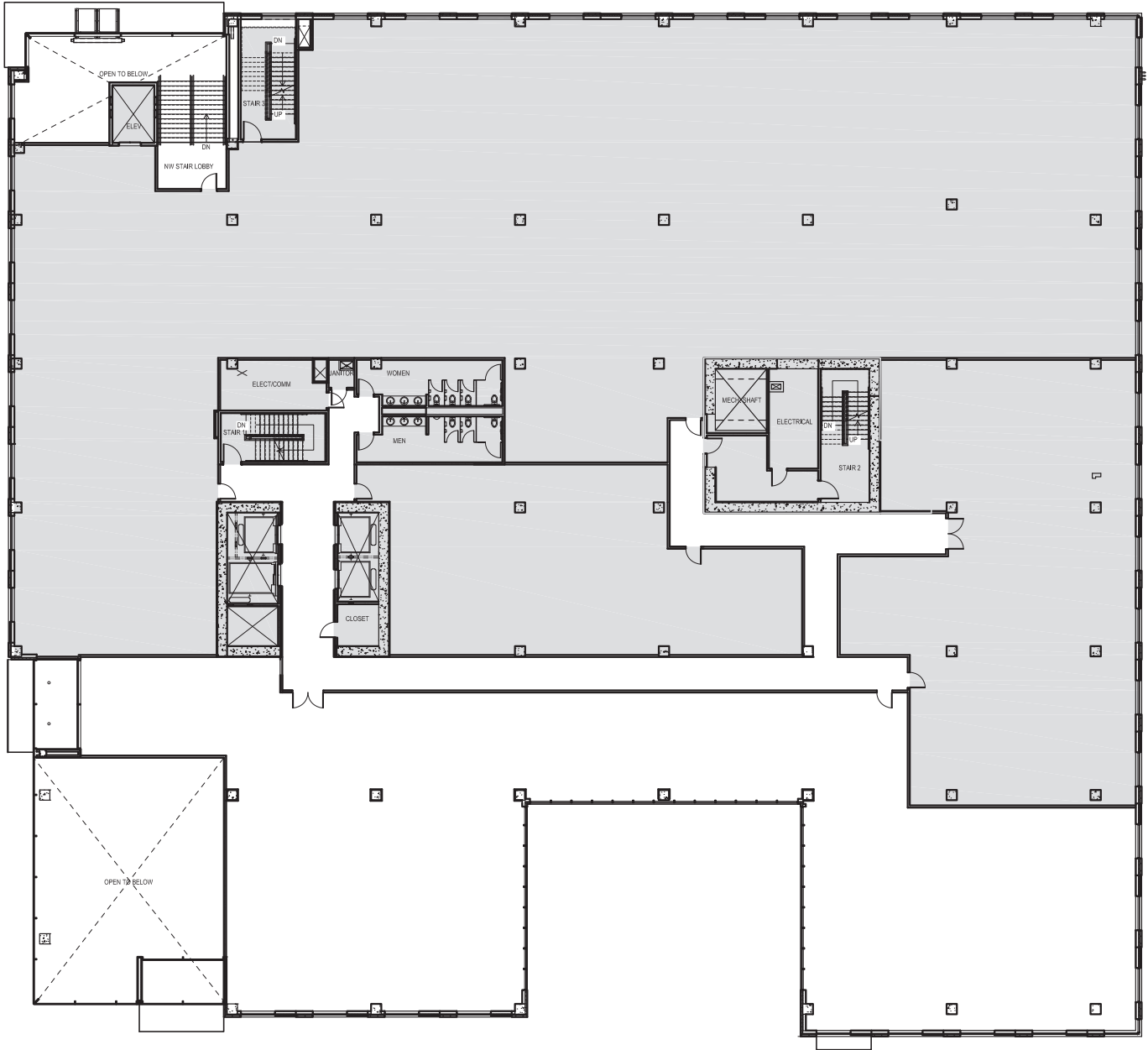
15TH & MARKET

1448 NW Market Street
Seattle, WA 98107

SECOND FLOOR

Rentable square feet: 10,699

Available Leased



Schedule a Tour
206-467-7600



MARTIN SELIG
REAL ESTATE

FOR LEASE

15TH & MARKET

1448 NW Market Street
Seattle, WA 98107

THIRD FLOOR

Rentable square feet: 42,286

Available Leased

