

Schedule a Tour  
206-467-7600



MARTIN SELIG  
REAL ESTATE

# FOR LEASE



## 2118 THIRD AVENUE

2118 Third Avenue  
Seattle, WA 98121

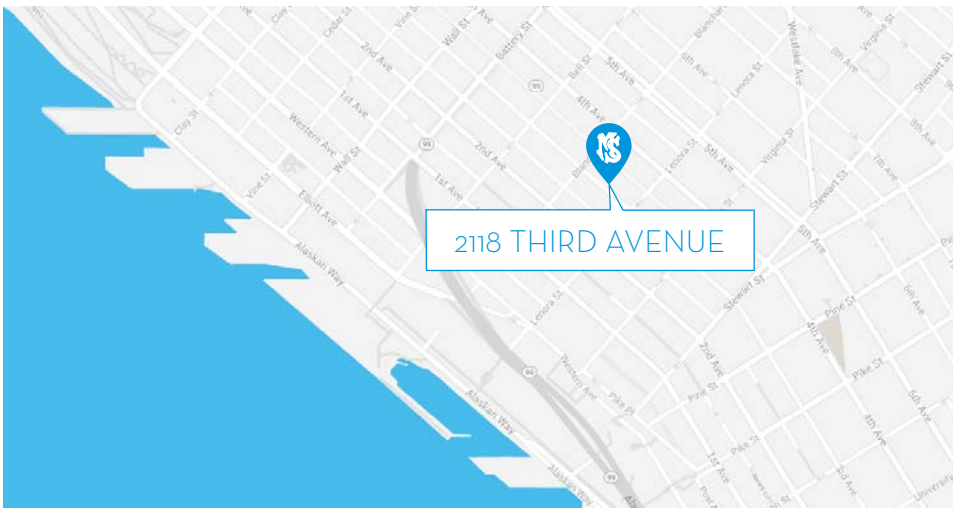
Available Square Footage: 6,445

### Building Features:

- 12,611 total square feet
- Two floors and mezzanine
- Janitorial and security services
- Garbage disposal and recycling services
- Between Lenora and Blanchard Streets
- Pet-friendly offices

### Neighborhood Features:

- Excellent I-5 and SR 99 highway access
- Two blocks to retail core and bus tunnel
- Easy access to Pike Place Market
- Short stroll to the newest Amazon campus and spacious Denny Park
- Starbucks around the corner
- Relaxing 15-minute walk to Olympic Sculpture Park



CALL US TO SCHEDULE A TOUR | 206-467-7600 | [martinselig.com](http://martinselig.com)



Mike Brixner  
[mbrixner@martinselig.com](mailto:mbrixner@martinselig.com)



Theresa Howard  
[thoward@martinselig.com](mailto:thoward@martinselig.com)



Ilich Vahimi  
[ivahimi@martinselig.com](mailto:ivahimi@martinselig.com)



Michael Brixner  
[mcbrxner@martinselig.com](mailto:mcbrxner@martinselig.com)



Martin Selig  
[mselectig@martinselig.com](mailto:mselectig@martinselig.com)

Schedule a Tour  
206-467-7600



MARTIN SELIG  
REAL ESTATE

# FOR LEASE

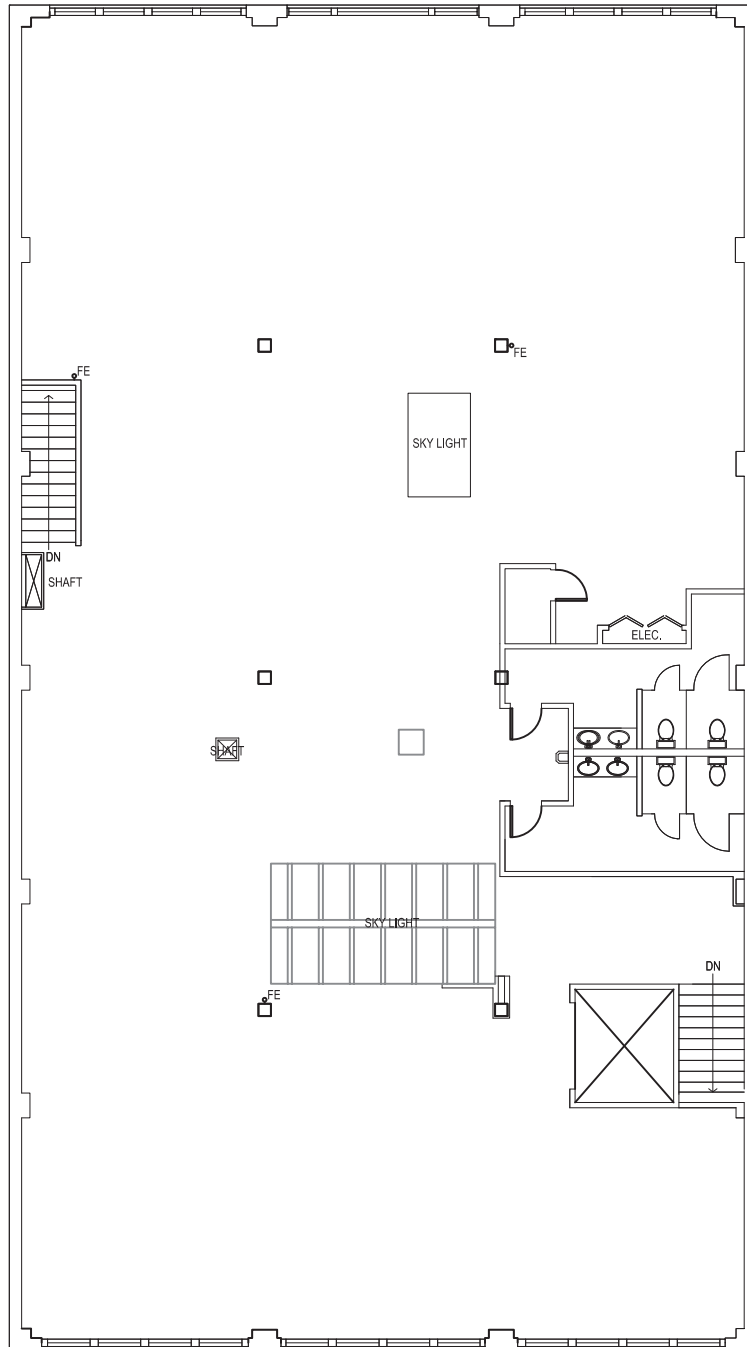
## 2118 THIRD AVENUE

2118 Third Avenue  
Seattle, WA 98121

### SECOND FLOOR

Rentable square feet: 6,445

Available  Leased



< N