

Schedule a Tour
206-467-7600



MARTIN SELIG
REAL ESTATE

FOR LEASE



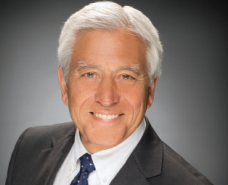
Martin Selig
mselig@martinsel.com



Jordan Selig
jselig@martinsel.com



Theresa Howard
thoward@martinsel.com



Mike Brixner
mbrixner@martinsel.com



Ilich Vahimi
ivahimi@martinsel.com



Michael Brixner
mcbrixner@martinsel.com



David Selig
dselig@martinsel.com



Building Features:

- Highly efficient floor plates
- Custom build-outs available
- Indoor parking
- Energy Star certified
- Decks with unobstructed views of Elliott Bay on every floor

- Pet-friendly offices
- Free lobby Wi-Fi
- Bike Storage
- Fitness Center
- On-site showers

Neighborhood Features:

- Adjacent to nine-acre Olympic Sculpture Park
- Walking distance to nearby restaurants and shops
- Easy access to miles of waterfront bike trails

Available Square Footage: 42,830

3131 ELLIOTT

3131 Elliott Avenue
Seattle, WA 98121

CALL US TO SCHEDULE A TOUR | 206-467-7600 | martinsel.com

Schedule a Tour
206-467-7600

FOR LEASE

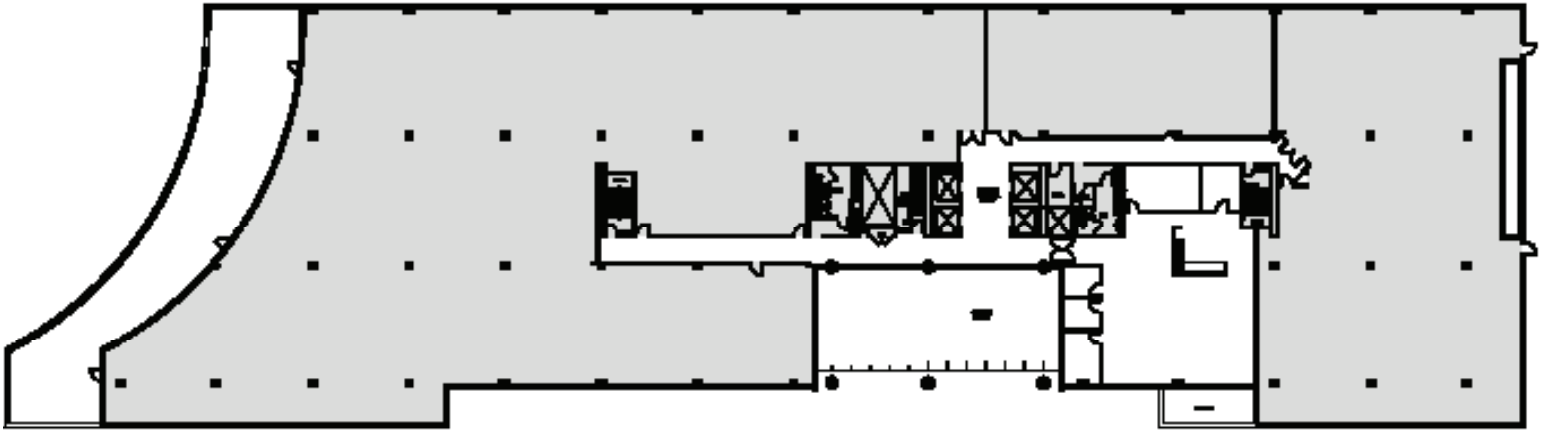
3131 ELLIOTT

3131 Elliott Avenue
Seattle, WA 98121

2ND FLOOR

Rentable square feet: 3,023

Available Leased



N >

Schedule a Tour
206-467-7600

FOR LEASE

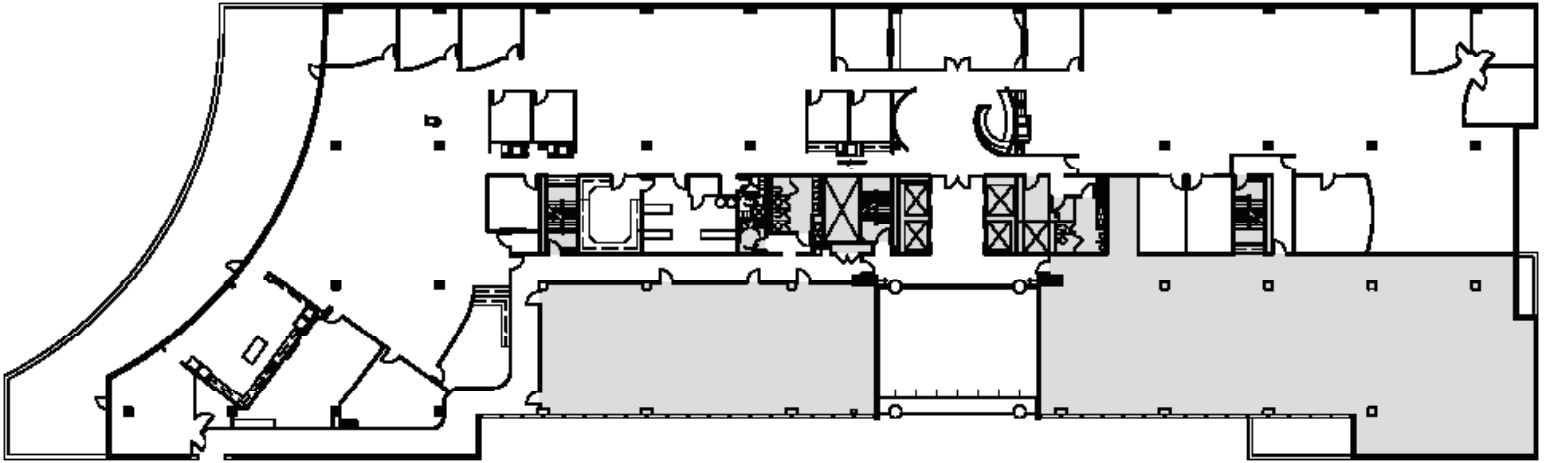
3131 ELLIOTT

3131 Elliott Avenue
Seattle, WA 98121

3RD FLOOR

Rentable square feet: 23,641

Available Leased



N >

Schedule a Tour
206-467-7600

FOR LEASE

3131 ELLIOTT

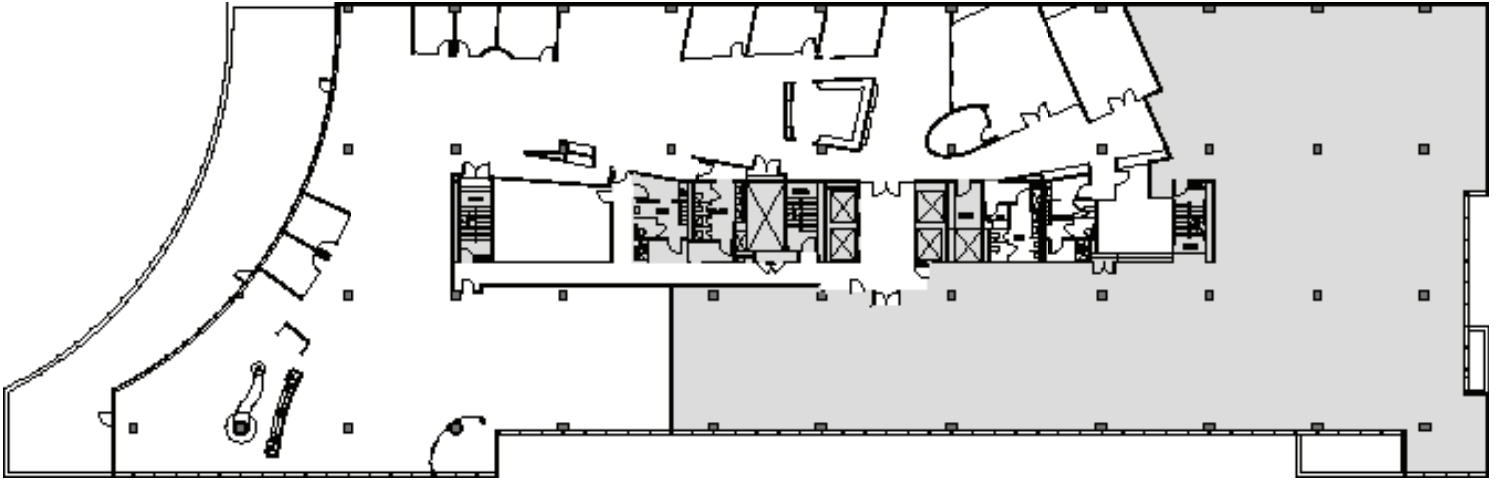
3131 Elliott Avenue
Seattle, WA 98121

4TH FLOOR

Rentable square feet: 11,718

Deck rentable square feet: 2,814

Available Leased



N >

Schedule a Tour
206-467-7600

FOR LEASE

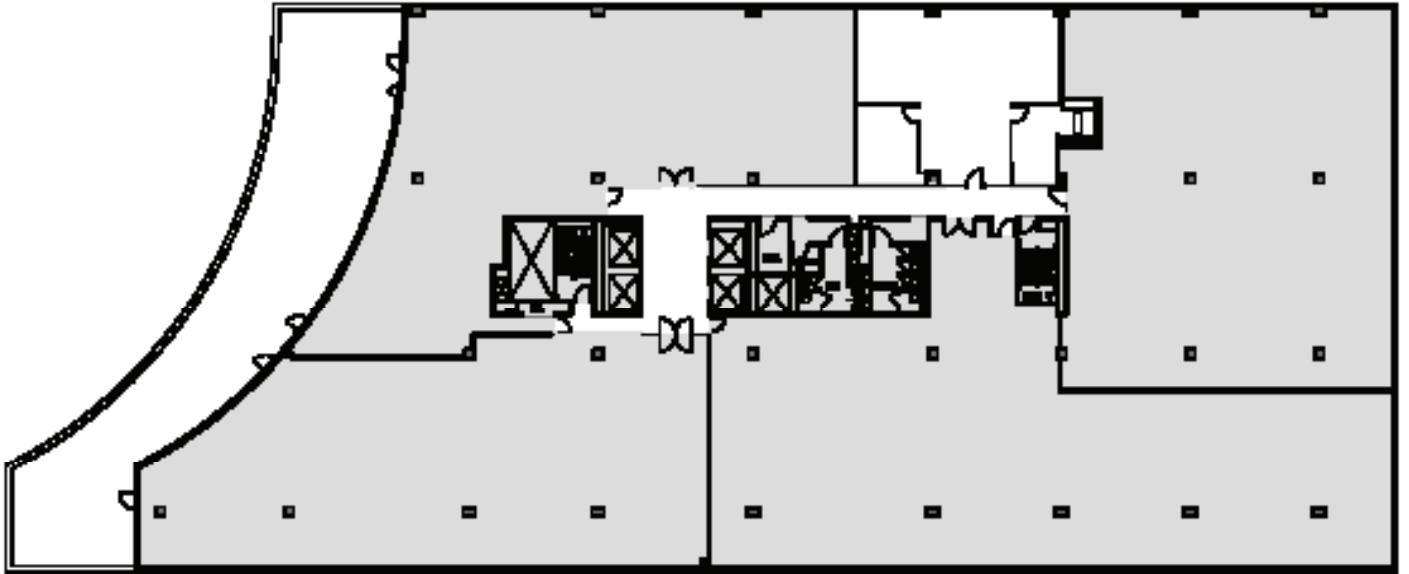
3131 ELLIOTT

3131 Elliott Avenue
Seattle, WA 98121

7TH FLOOR

Rentable square feet: 1,634

Available Leased



N >