

Schedule a Tour  
206-467-7600



MARTIN SELIG  
REAL ESTATE

# FOR LEASE



Martin Selig  
mselig@martinselign.com



Jordan Selig  
jselig@martinselign.com



Theresa Howard  
thoward@martinselign.com



Mike Brixner  
mbrixner@martinselign.com



Ilich Vahimi  
ivahimi@martinselign.com



Michael Brixner  
mcbrixner@martinselign.com



David Selig  
dselig@martinselign.com



### Building Features:

- Highly efficient floor plates
- Custom build-outs available
- Indoor parking
- Energy Star certified
- Decks with unobstructed views of Elliott Bay on every floor

- Pet-friendly offices
- Free lobby Wi-Fi
- Bike Storage
- Fitness Center
- On-site showers

### Neighborhood Features:

- Adjacent to nine-acre Olympic Sculpture Park
- Walking distance to nearby restaurants and shops
- Easy access to miles of waterfront bike trails

Available Square Footage: 15,824

## 3131 ELLIOTT

3131 Elliott Avenue  
Seattle, WA 98121

CALL US TO SCHEDULE A TOUR | 206-467-7600 | martinselign.com

Schedule a Tour  
206-467-7600

# FOR LEASE

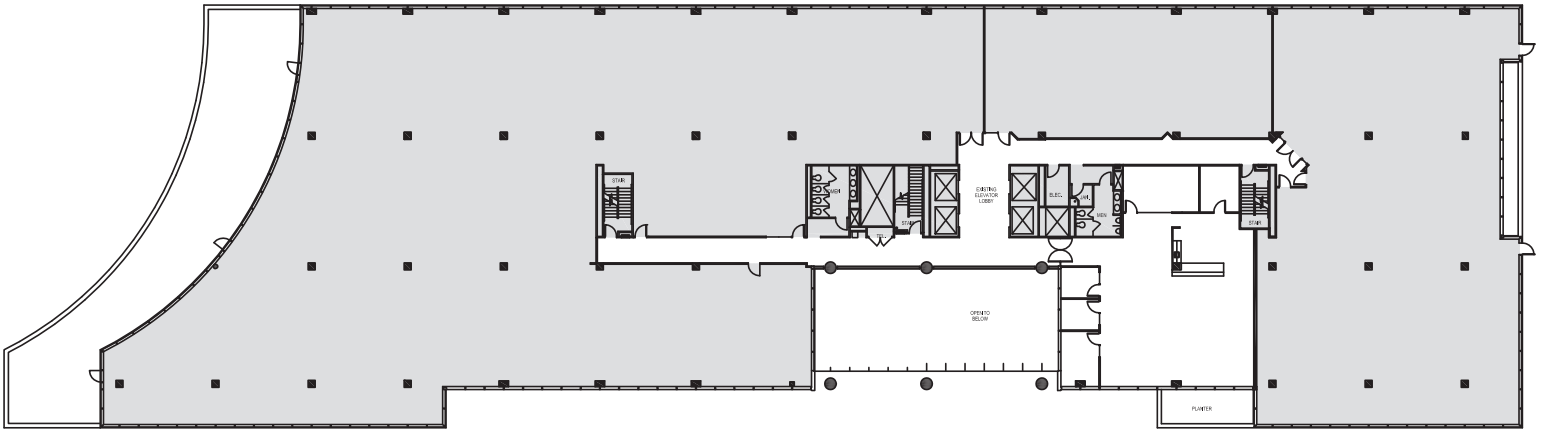
## 3131 ELLIOTT

3131 Elliott Avenue  
Seattle, WA 98121

### 2ND FLOOR

Rentable square feet: 3,036

Available  Leased



Schedule a Tour  
206-467-7600

# FOR LEASE

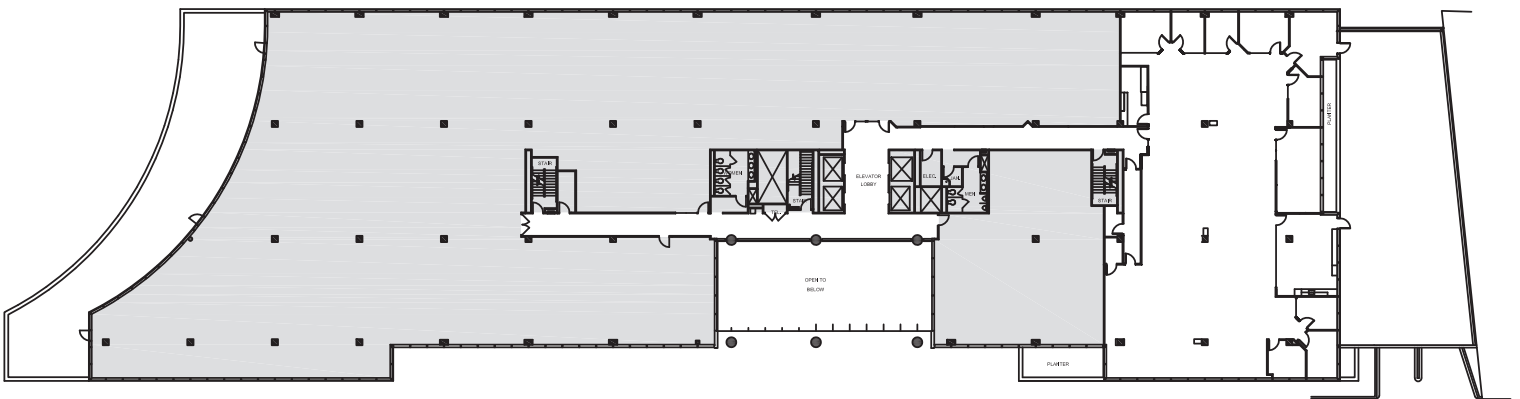
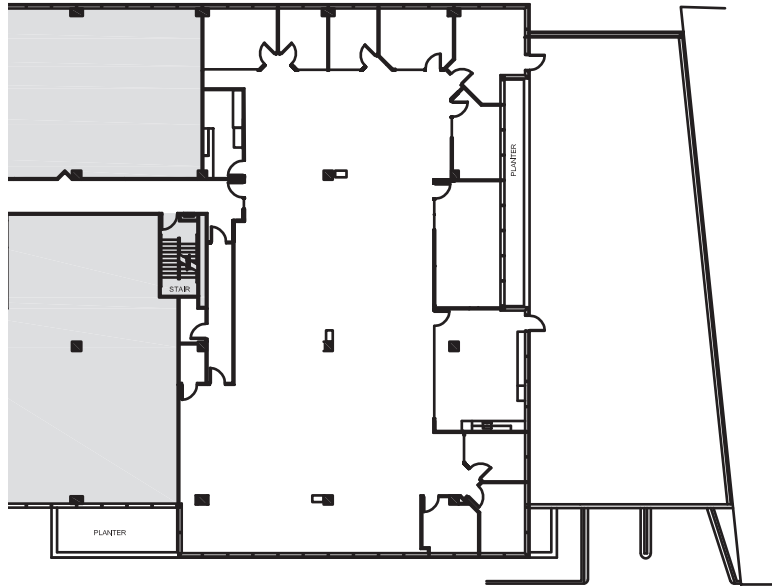
## 3131 ELLIOTT

3131 Elliott Avenue  
Seattle, WA 98121

### 2ND FLOOR

Rentable square feet: 9,885

Available  Leased



Schedule a Tour  
206-467-7600

# FOR LEASE

## 3131 ELLIOTT

3131 Elliott Avenue  
Seattle, WA 98121

### 3RD FLOOR

Rentable square feet: 2,903

Available  Leased

