

Schedule a Tour
206-467-7600



MARTIN SELIG
REAL ESTATE

FOR LEASE



3131 ELLIOTT

3131 Elliott Avenue
Seattle, WA 98121

Available Square Footage: 6,855

Building Features:

- Highly efficient floor plates
- Custom build-outs available
- Indoor parking
- Energy Star certified
- Decks with unobstructed views of Elliott Bay on every floor
- Pet-friendly offices
- Free lobby Wi-Fi
- Bike Storage
- Fitness Center
- On-site showers
- Local lunch delivery from Peach

Neighborhood Features:

- Adjacent to nine-acre Olympic Sculpture Park
- Walking distance to nearby restaurants and shops
- Easy access to miles of waterfront bike trails
- Free of downtown congestion



CALL US TO SCHEDULE A TOUR | 206-467-7600 | martinselig.com



Mike Brixner
mbrixner@martinselig.com



Theresa Howard
thoward@martinselig.com



Ilich Vahimi
ivahimi@martinselig.com



Michael Brixner
mcbrxner@martinselig.com



Martin Selig
mselectig@martinselig.com

Schedule a Tour
206-467-7600



MARTIN SELIG
REAL ESTATE

FOR LEASE

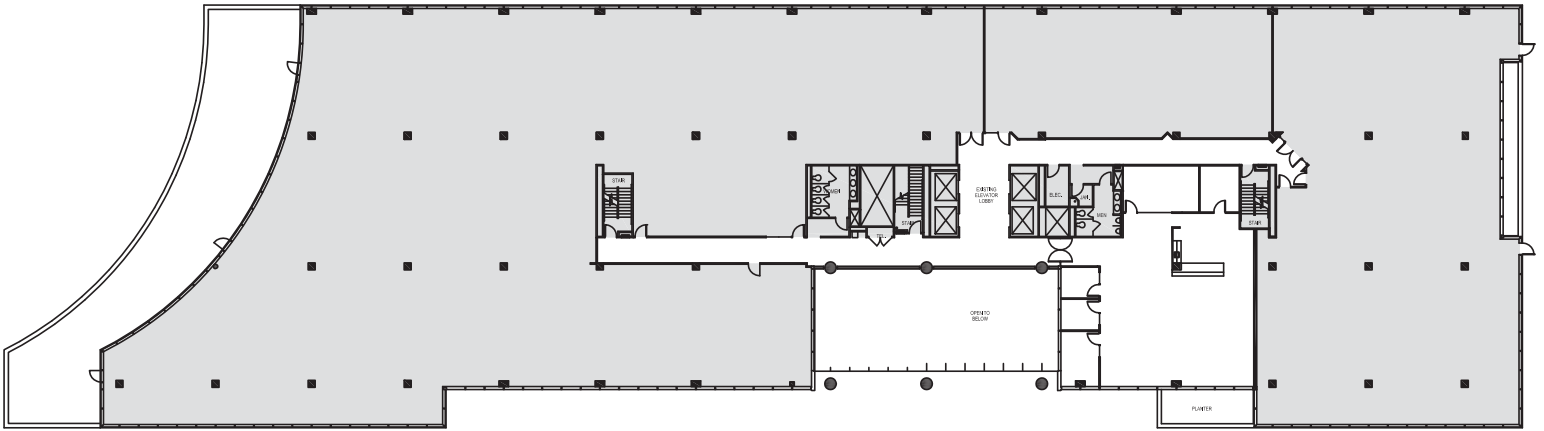
3131 ELLIOTT

3131 Elliott Avenue
Seattle, WA 98121

SECOND FLOOR

Rentable square feet: 3,043

Available Leased



Schedule a Tour
206-467-7600



MARTIN SELIG
REAL ESTATE

FOR LEASE

3131 ELLIOTT

3131 Elliott Avenue
Seattle, WA 98121

THIRD FLOOR

Rentable square feet: 3,812

Available Leased

