

Schedule a Tour
206-467-7600



MARTIN SELIG
REAL ESTATE

FOR LEASE



Martin Selig
mselig@martinselg.com



Jordan Selig
jselig@martinselg.com



Theresa Howard
thoward@martinselg.com



Mike Brixner
mbrixner@martinselg.com



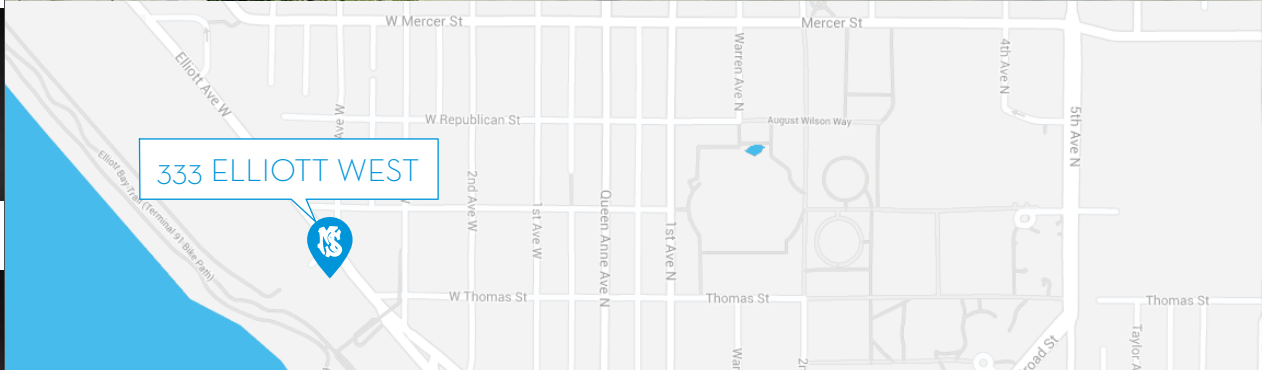
Ilich Vahimi
ivahimi@martinselg.com



Michael Brixner
mcbrixner@martinselg.com



David Selig
dselig@martinselg.com



Building Features:

- Custom build-outs available
- 122 indoor, 29 outdoor parking stalls
- High ceilings and some outside decks
- In-house showers
- Unobstructed views of Elliott Bay
- Pet-friendly
- Convenient drive-thru for pick-up and drop-off
- Unique statue, "What Goes Out... Always Comes Back" by local artist Catherine Mayer

Neighborhood Features:

- Excellent highway access
- Close-by shops and restaurants
- Adjacent skybridge to waterfront parks
- Miles of Elliott Bay bike trails
- Restaurants and shops nearby
- Free of downtown congestion

333 ELLIOTT WEST

333 Elliott West
Seattle, WA 98119

Available Square Footage: 49,393

CALL US TO SCHEDULE A TOUR | 206-467-7600 | martinselg.com

Schedule a Tour
206-467-7600



MARTIN SELIG
REAL ESTATE

FOR LEASE

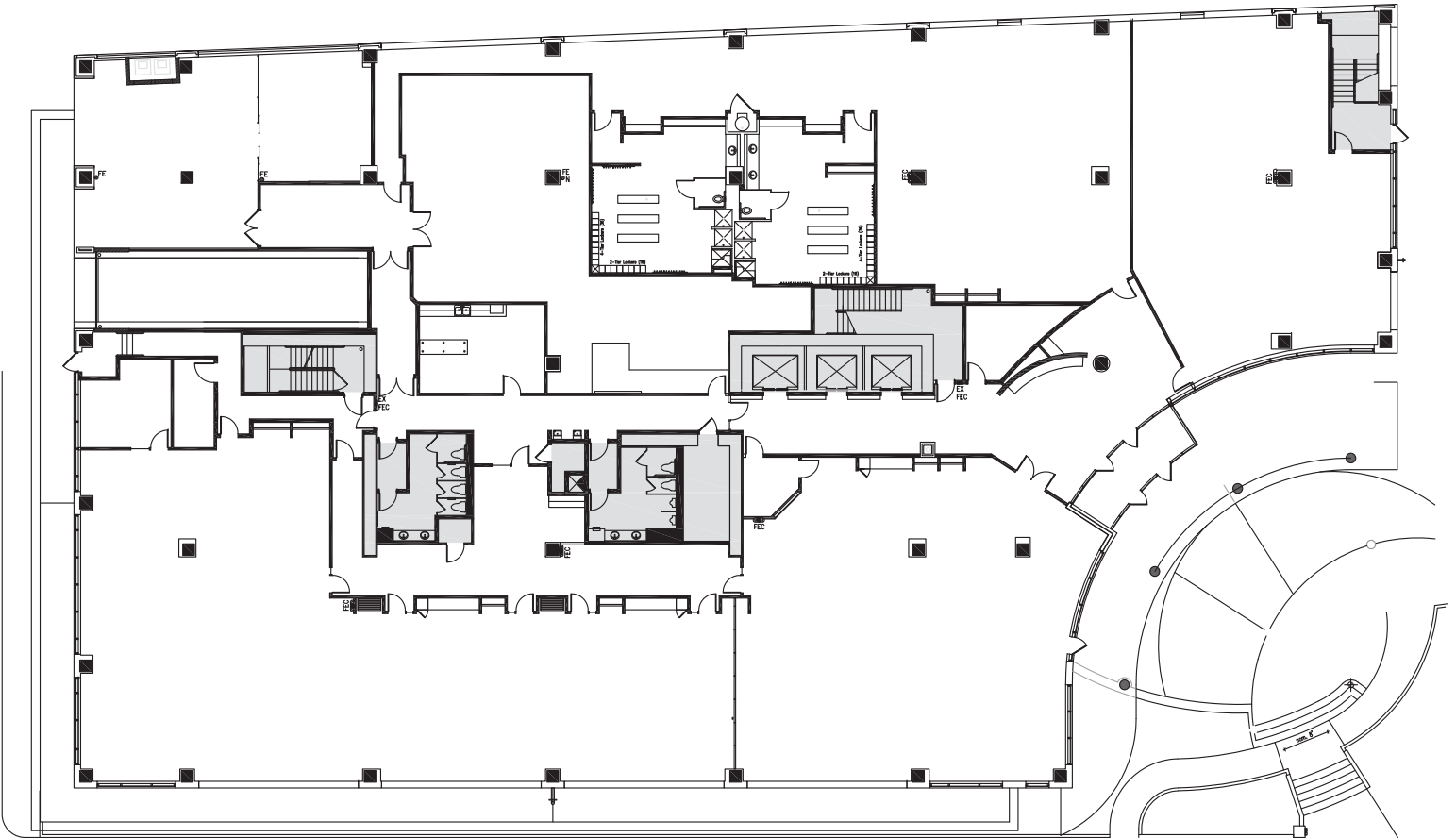
333 ELLIOTT WEST

333 Elliott Avenue W.
Seattle, WA 98119

1st FLOOR

Rentable square feet: 21,076

Available Leased



Schedule a Tour
206-467-7600



MARTIN SELIG
REAL ESTATE

FOR LEASE

333 ELLIOTT WEST

333 Elliott Avenue W.
Seattle, WA 98119

2nd FLOOR

Rentable square feet: 28,317

Available Leased

