

Schedule a Tour
206-467-7600



MARTIN SELIG
REAL ESTATE

FOR LEASE



FOURTH & BATTERY

2401 Fourth Avenue
Seattle, WA 98121

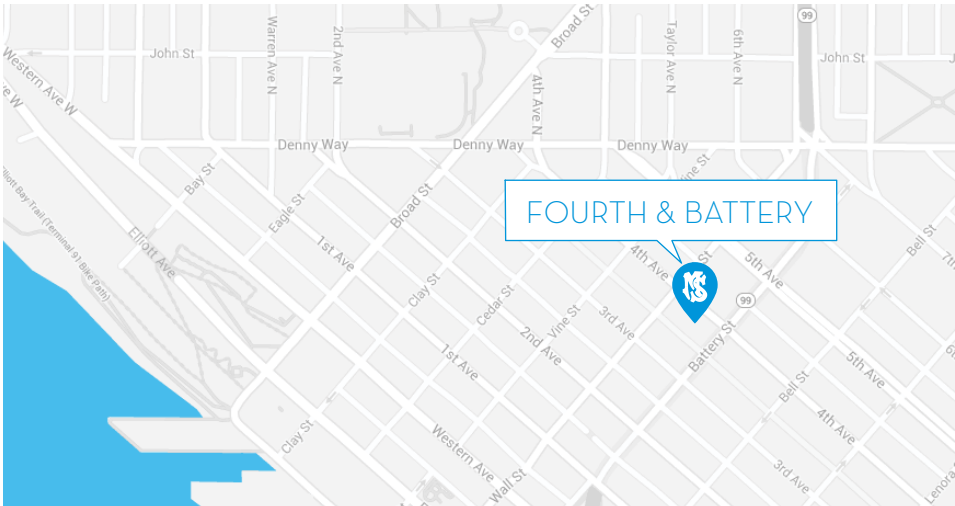
Available Square Footage: 27,398

Building Features:

- Custom build-outs available
- Indoor parking
- Beautiful western views of Elliott Bay
- Pet-friendly offices
- Bike storage
- Local lunch delivery from Peach

Neighborhood Features:

- Excellent I-5 and SR 99 highway access
- Abundance of public transit, downtown bus hub and Seattle Streetcar line
- Easy access to the retail core and South Lake Union's restaurants, bars and public parks
- Surrounded by the hippest part of Belltown, known as one of Seattle's fastest-growing neighborhoods



CALL US TO SCHEDULE A TOUR | 206-467-7600 | martinselig.com



Mike Brixner
mbrixner@martinselig.com



Theresa Howard
thoward@martinselig.com



Ilich Vahimi
ivahimi@martinselig.com



Michael Brixner
mcbrxner@martinselig.com



Martin Selig
mseelig@martinselig.com

Schedule a Tour
206-467-7600



MARTIN SELIG
REAL ESTATE

FOR LEASE

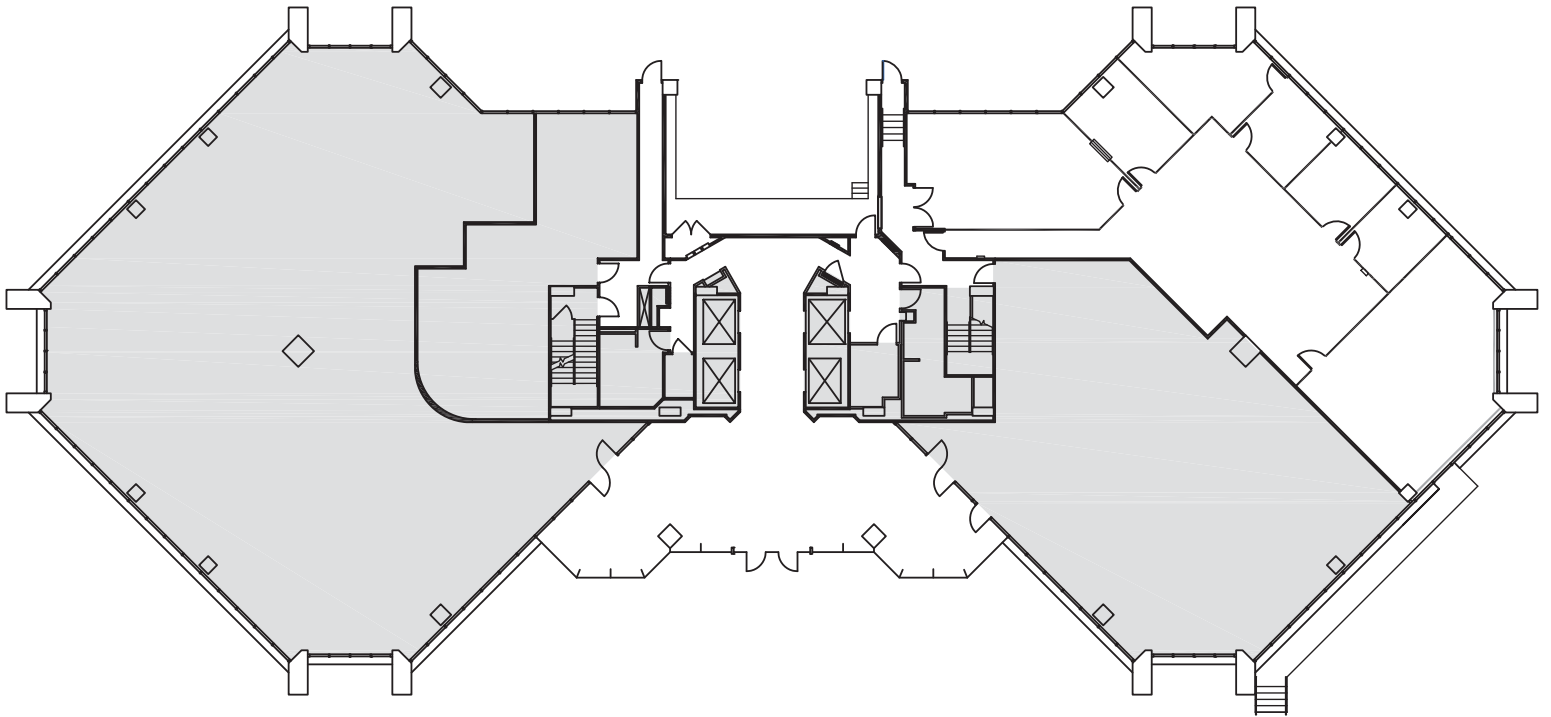
FOURTH & BATTERY

2401 Fourth Avenue
Seattle, WA 98121

FIRST FLOOR

Rentable square feet: 3,531

Available Leased



N >

Schedule a Tour
206-467-7600



MARTIN SELIG
REAL ESTATE

FOR LEASE

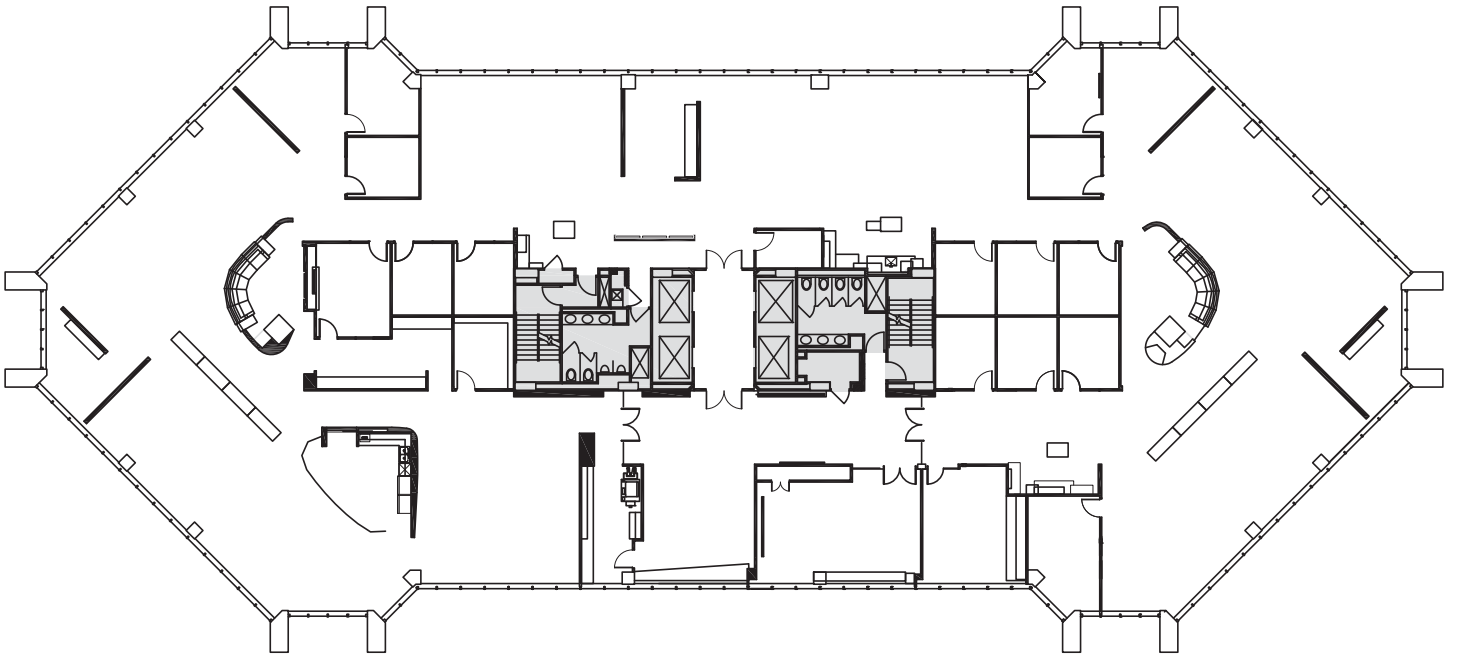
FOURTH & BATTERY

2401 Fourth Avenue
Seattle, WA 98121

THIRD FLOOR

Rentable square feet: 18,149

Available Leased



N >

Schedule a Tour
206-467-7600



MARTIN SELIG
REAL ESTATE

FOR LEASE

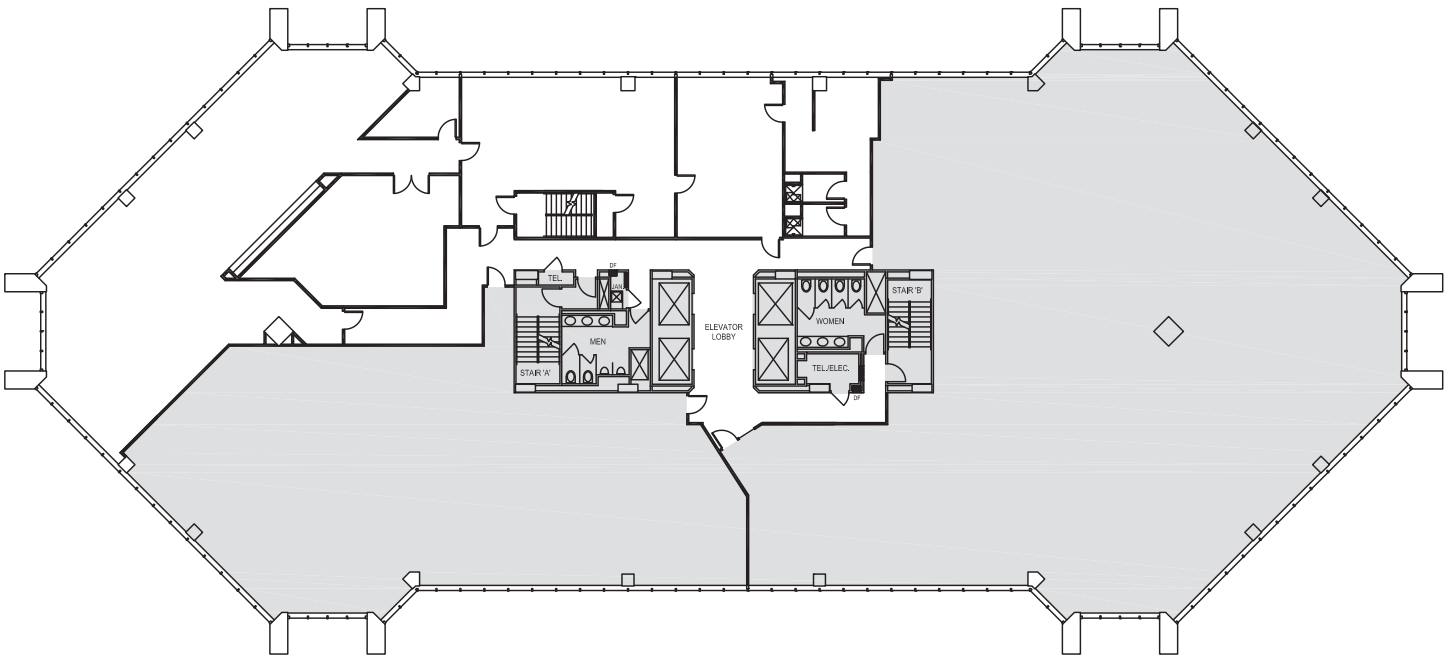
FOURTH & BATTERY

2401 Fourth Avenue
Seattle, WA 98121

SIXTH FLOOR

Rentable square feet: 5,718

Available Leased



N >