

Schedule a Tour
206-467-7600



MARTIN SELIG
REAL ESTATE

FOR LEASE



Martin Selig
mselig@martinselg.com



Jordan Selig
jselig@martinselg.com



Theresa Howard
thoward@martinselg.com



Mike Brixner
mbrixner@martinselg.com



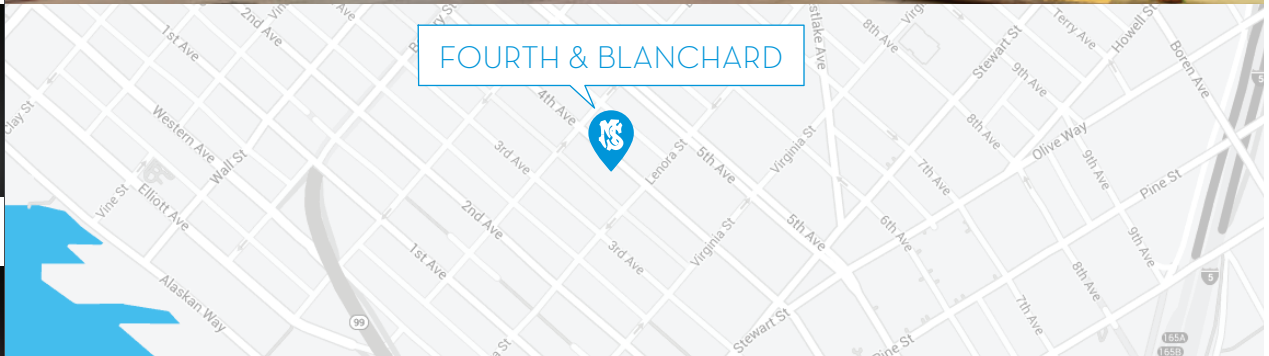
Ilich Vahimi
ivahimi@martinselg.com



Michael Brixner
mcbrixner@martinselg.com



David Selig
dselig@martinselg.com



Building Features:

- Custom build-outs available
- Indoor parking
- Highest-security high-rise in Seattle
- Starbucks and deli in lobby
- Landmark structure featuring iconic architecture
- Pet-friendly
- Bike storage
- On-site showers & locker rooms
- Local lunch delivery from Peach

Neighborhood Features:

- Excellent highway access
- Easy access to Pike Place Market
- Surrounded by retail, banks and restaurants
- Two blocks to retail core and transit tunnel

FOURTH & BLANCHARD

2101 Fourth Avenue
Seattle, WA 98121

Available Square Footage: 108,008

CALL US TO SCHEDULE A TOUR | 206-467-7600 | martinselg.com

Schedule a Tour
206-467-7600

FOR LEASE

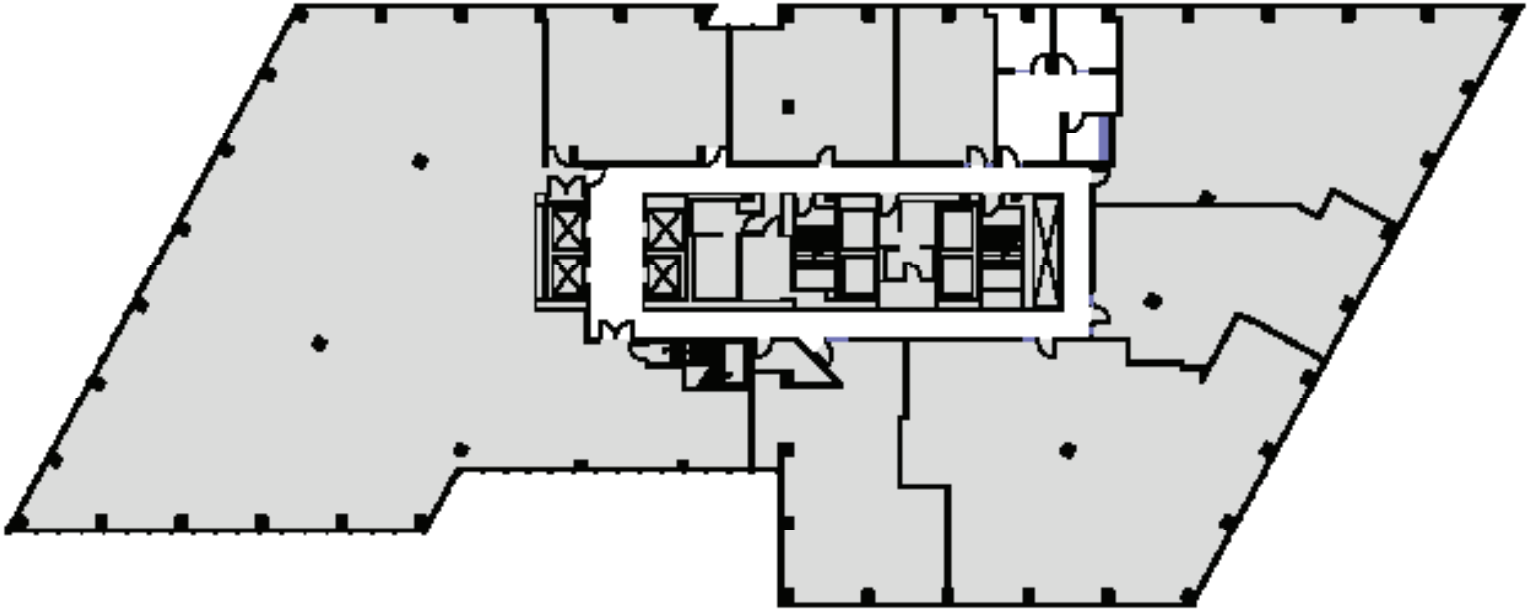
FOURTH & BLANCHARD

2101 Fourth Avenue
Seattle, WA 98121

3rd FLOOR

Rentable square feet: 716

Available Leased



N >

Schedule a Tour
206-467-7600

FOR LEASE

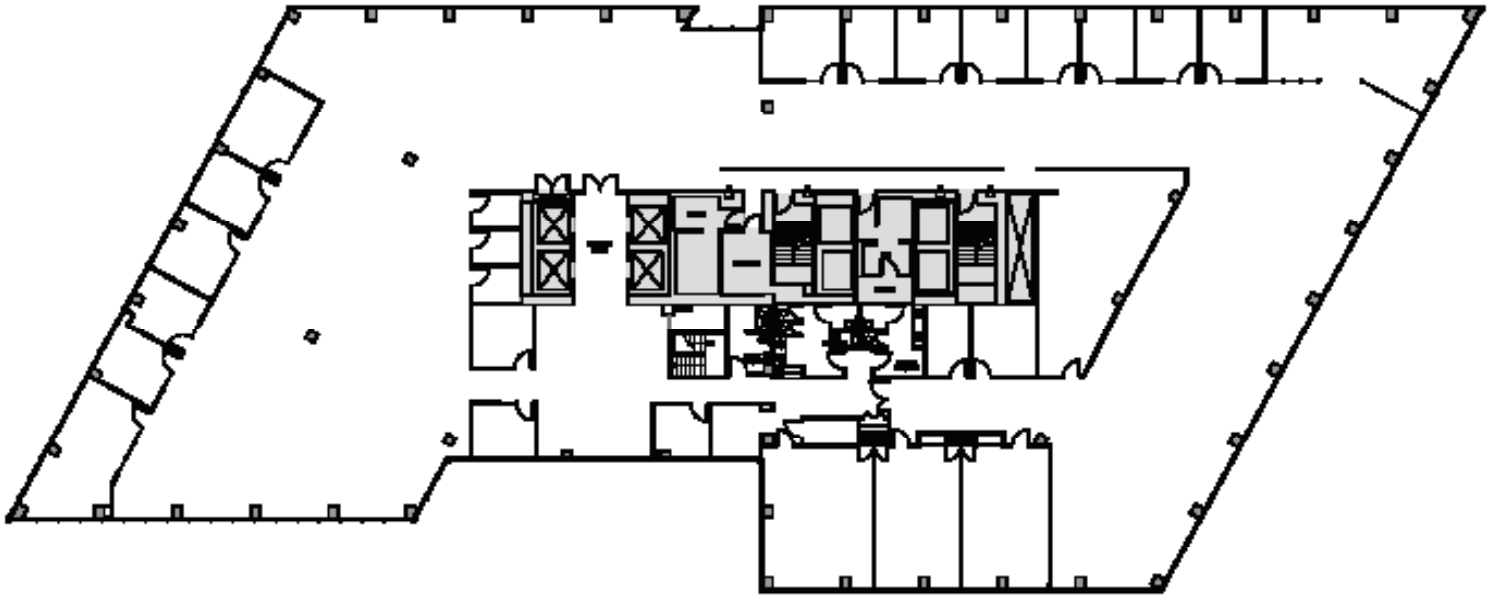
FOURTH & BLANCHARD

2101 Fourth Avenue
Seattle, WA 98121

4TH FLOOR

Rentable square feet: 20,882

Available Leased



N >

Schedule a Tour
206-467-7600

FOR LEASE

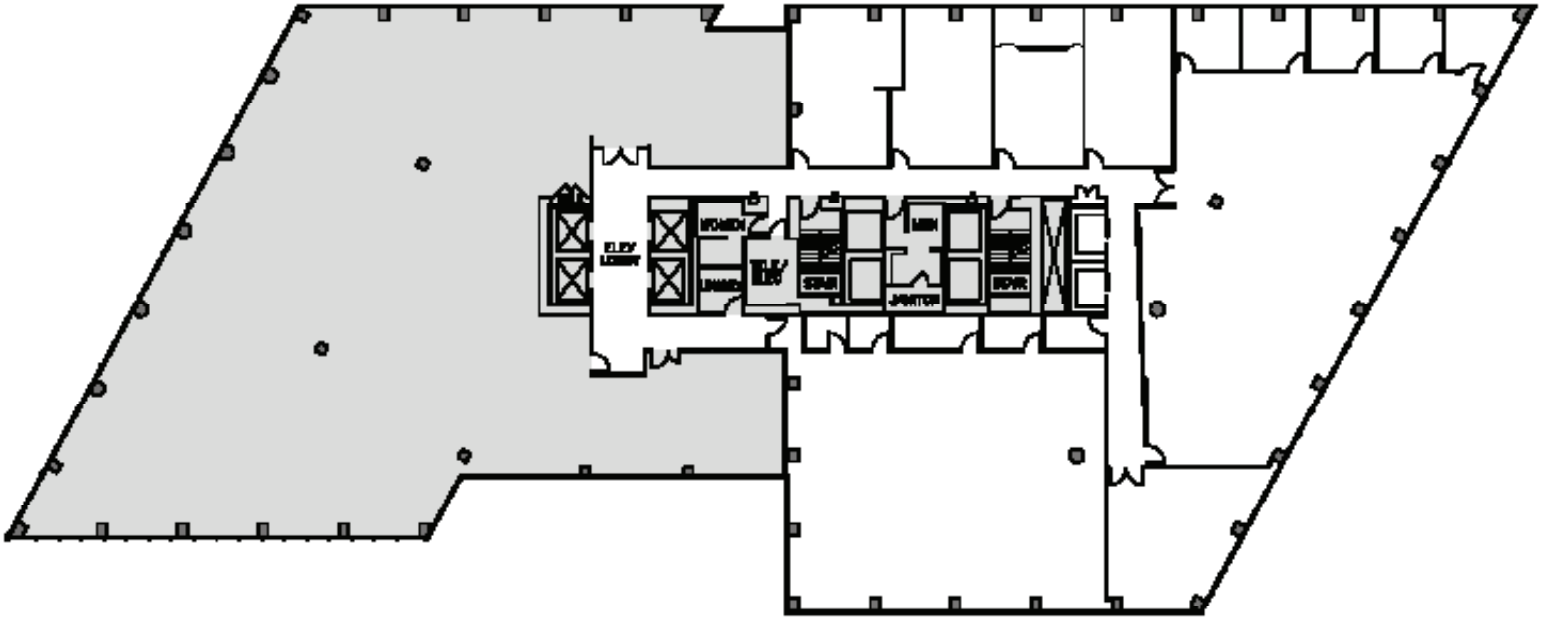
FOURTH & BLANCHARD

2101 Fourth Avenue
Seattle, WA 98121

5TH FLOOR

Rentable square feet: 11,165

Available Leased



N >

Schedule a Tour
206-467-7600

FOR LEASE

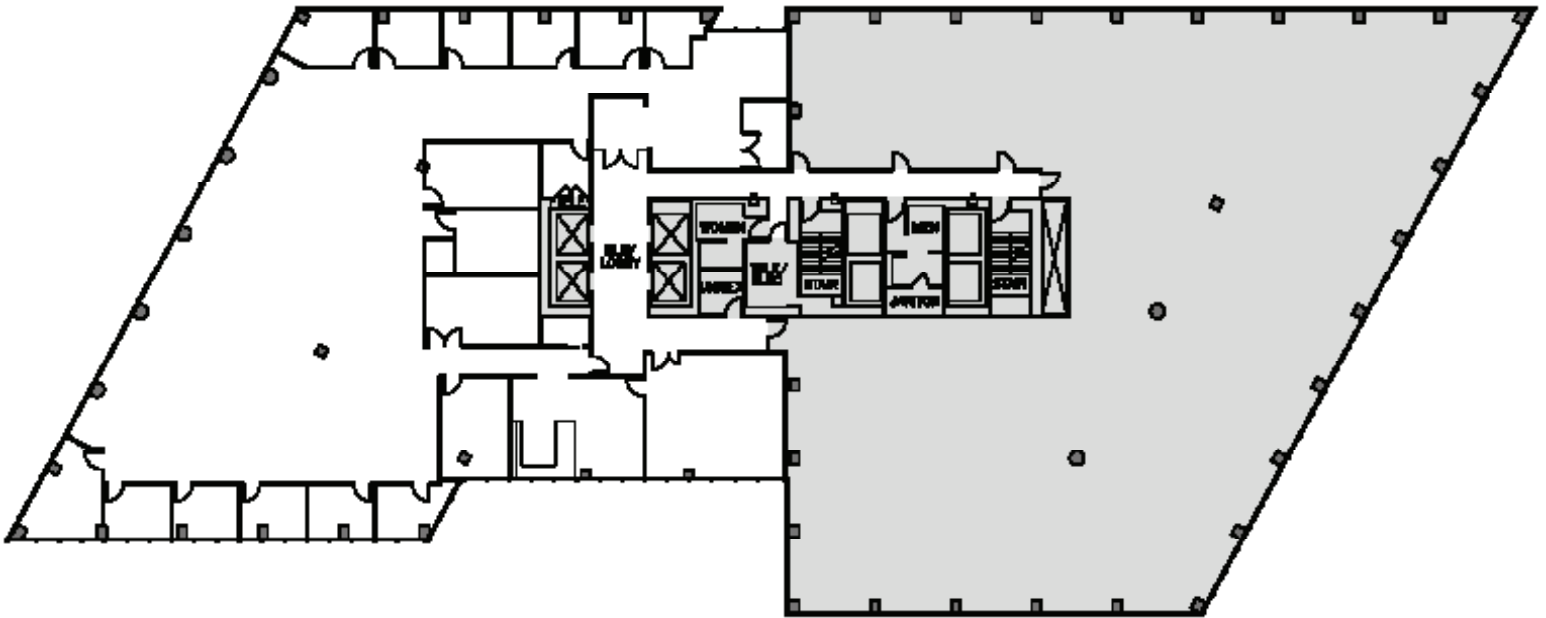
FOURTH & BLANCHARD

2101 Fourth Avenue
Seattle, WA 98121

5TH FLOOR

Rentable square feet: 9,705

Available Leased



N >

Schedule a Tour
206-467-7600

FOR LEASE

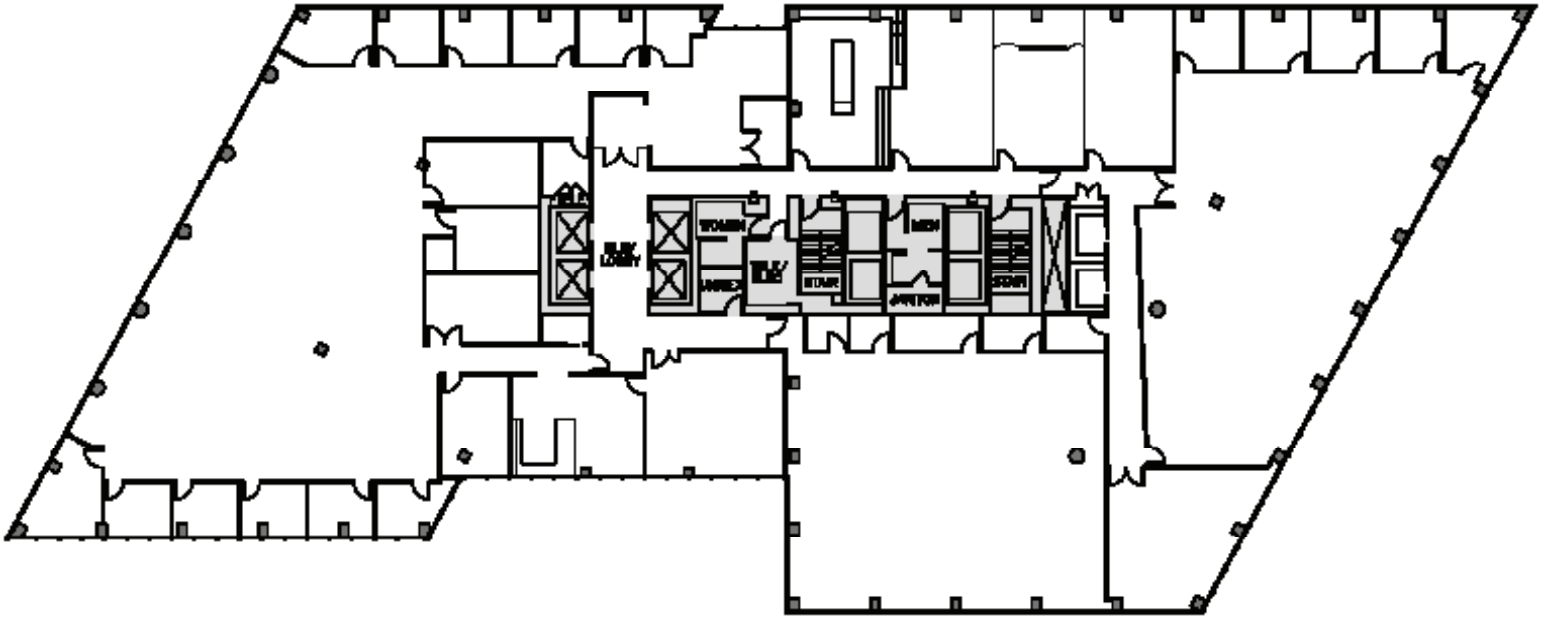
FOURTH & BLANCHARD

2101 Fourth Avenue
Seattle, WA 98121

5TH FLOOR

Rentable square feet: 20,871

Available Leased



Schedule a Tour
206-467-7600

FOR LEASE

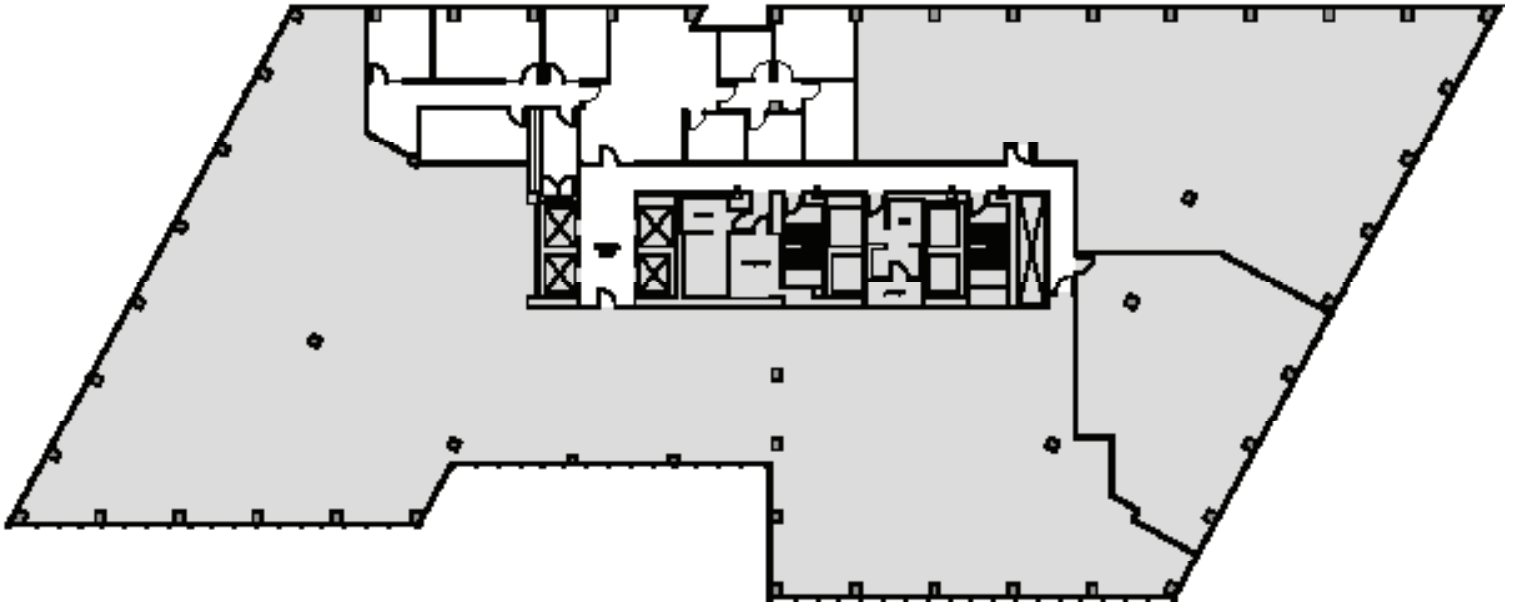
FOURTH & BLANCHARD

2101 Fourth Avenue
Seattle, WA 98121

6TH FLOOR

Rentable square feet: 2,788

Available Leased



N >

Schedule a Tour
206-467-7600

FOR LEASE

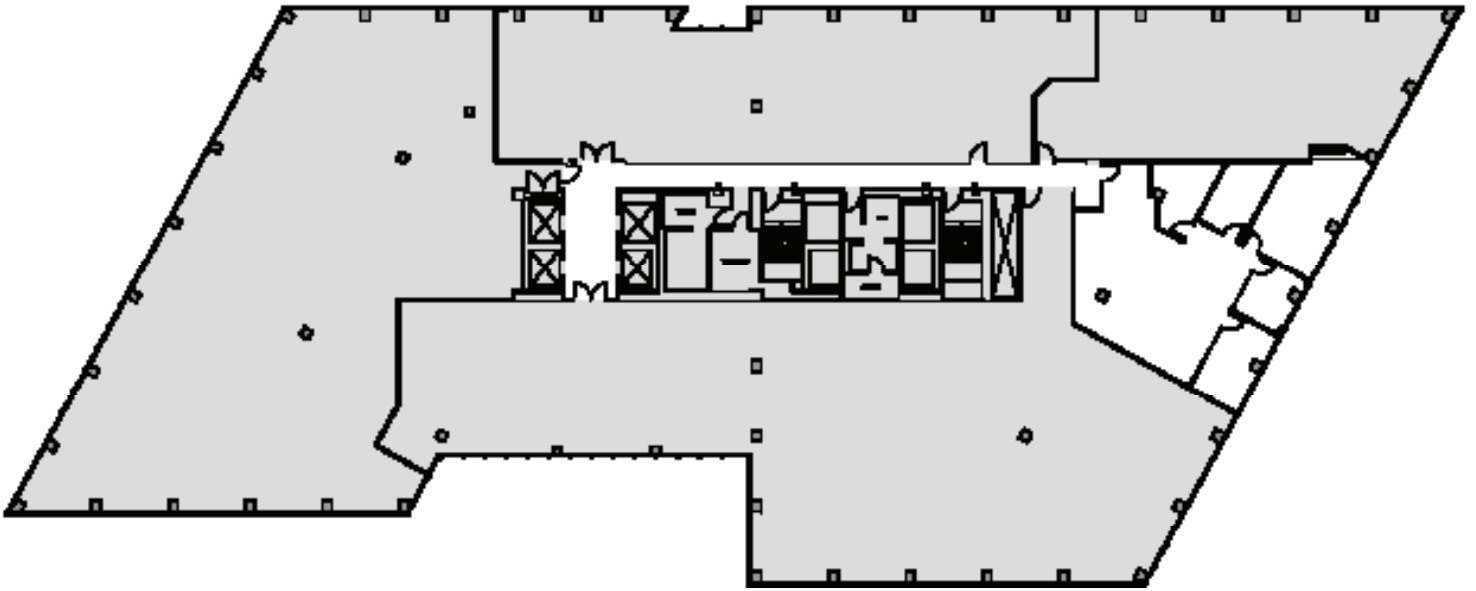
FOURTH & BLANCHARD

2101 Fourth Avenue
Seattle, WA 98121

7TH FLOOR

Rentable square feet: 2,082

Available Leased



N >

Schedule a Tour
206-467-7600

FOR LEASE

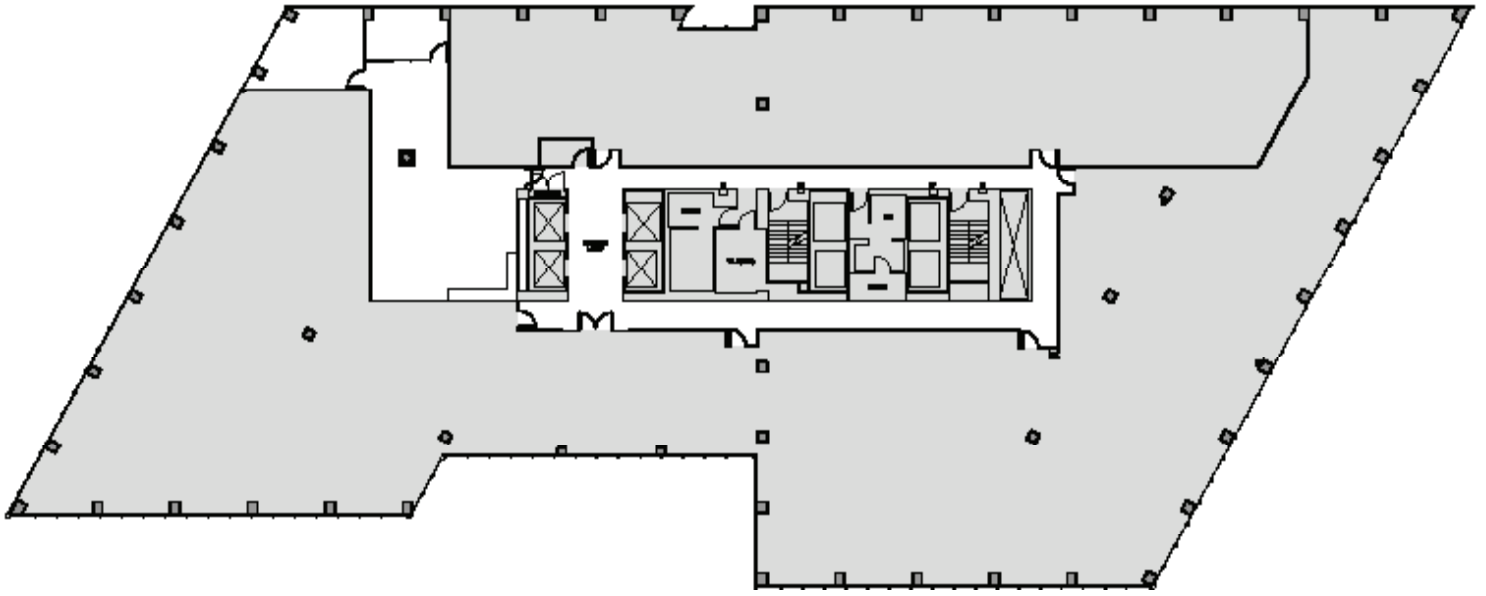
FOURTH & BLANCHARD

2101 Fourth Avenue
Seattle, WA 98121

8TH FLOOR

Rentable square feet: 1,630

Available Leased



N >

Schedule a Tour
206-467-7600

FOR LEASE

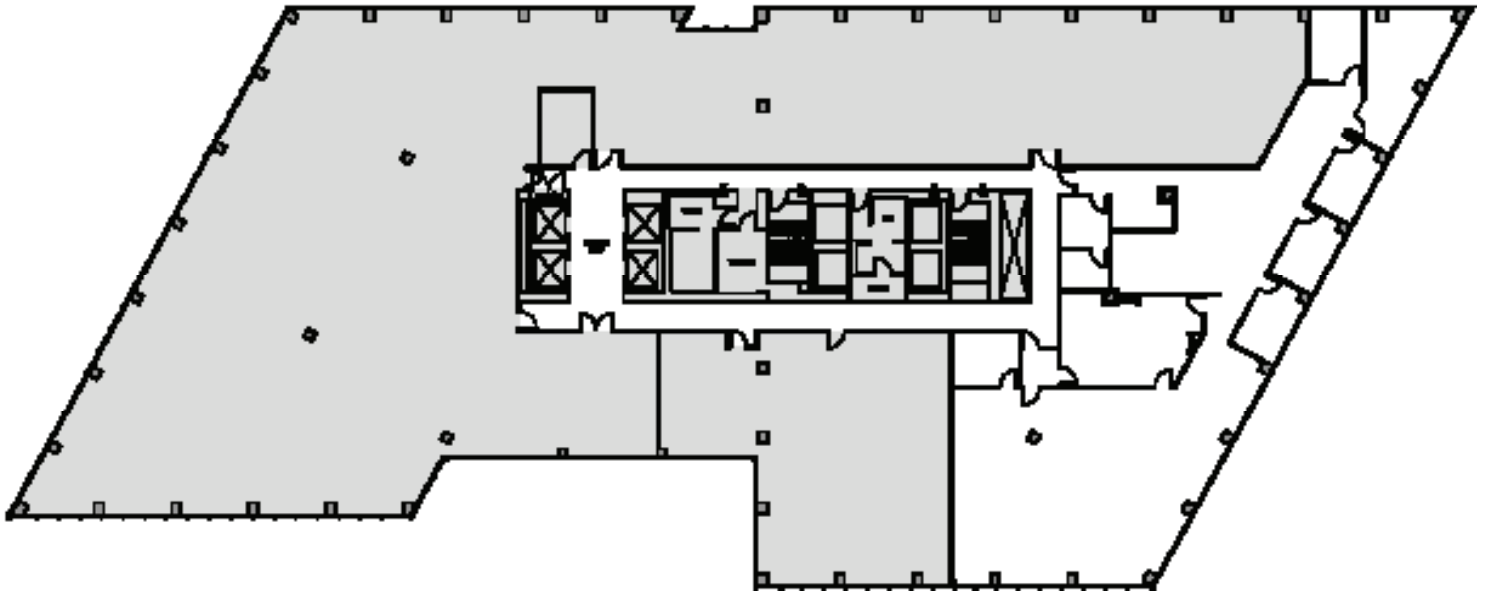
FOURTH & BLANCHARD

2101 Fourth Avenue
Seattle, WA 98121

8TH FLOOR

Rentable square feet: 5,575

Available Leased



N >

Schedule a Tour
206-467-7600

FOR LEASE

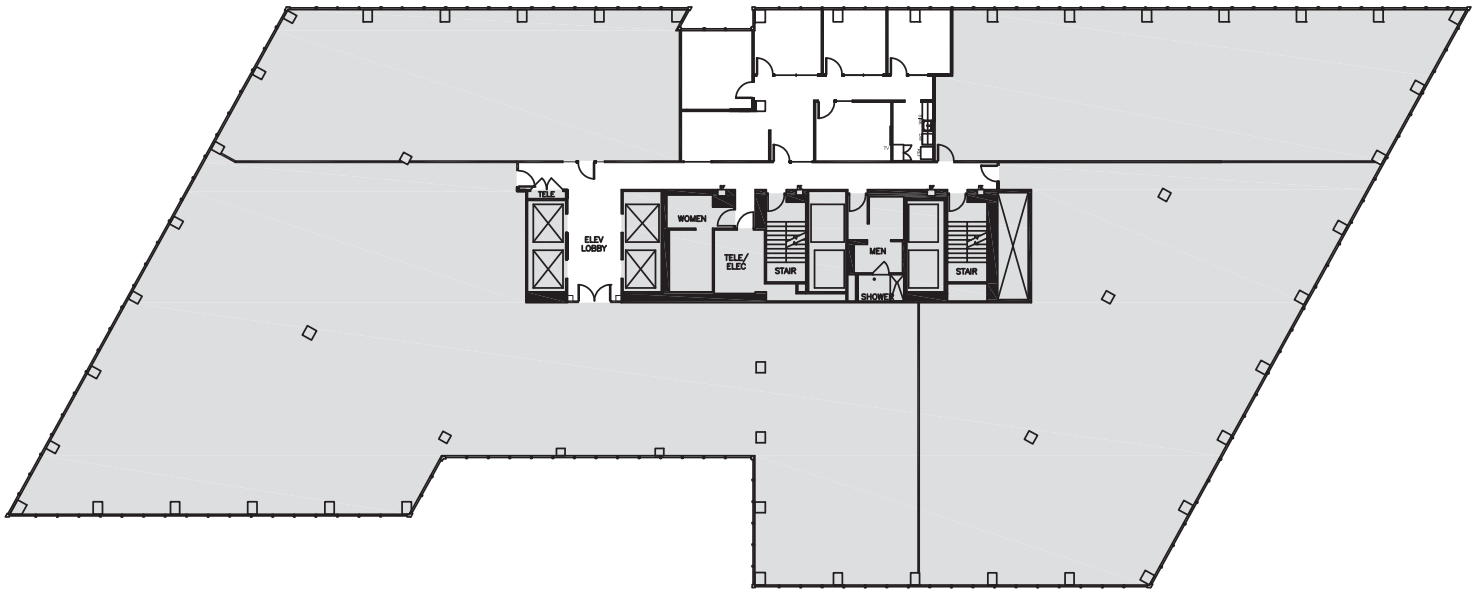
FOURTH & BLANCHARD

2101 Fourth Avenue
Seattle, WA 98121

9TH FLOOR

Rentable square feet: 1,477

Available Leased



N >

Schedule a Tour
206-467-7600

FOR LEASE

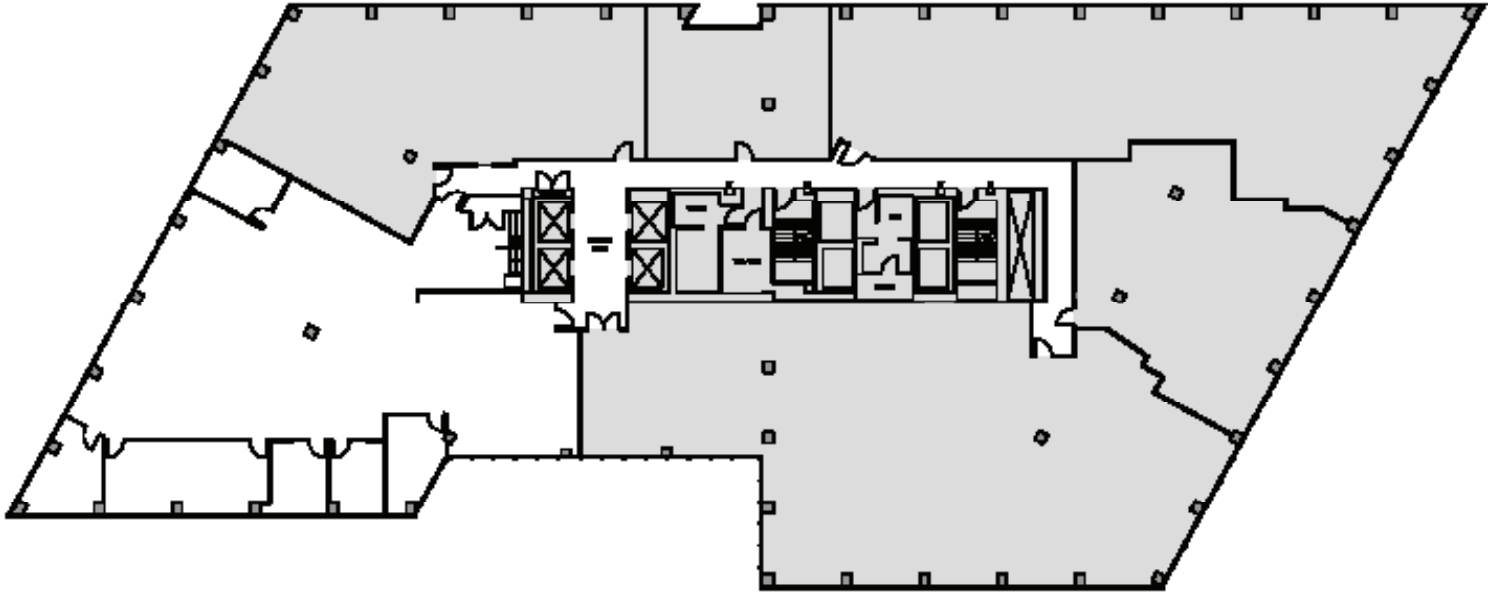
FOURTH & BLANCHARD

2101 Fourth Avenue
Seattle, WA 98121

10TH FLOOR

Rentable square feet: 5,492

Available Leased



N >

Schedule a Tour
206-467-7600

FOR LEASE

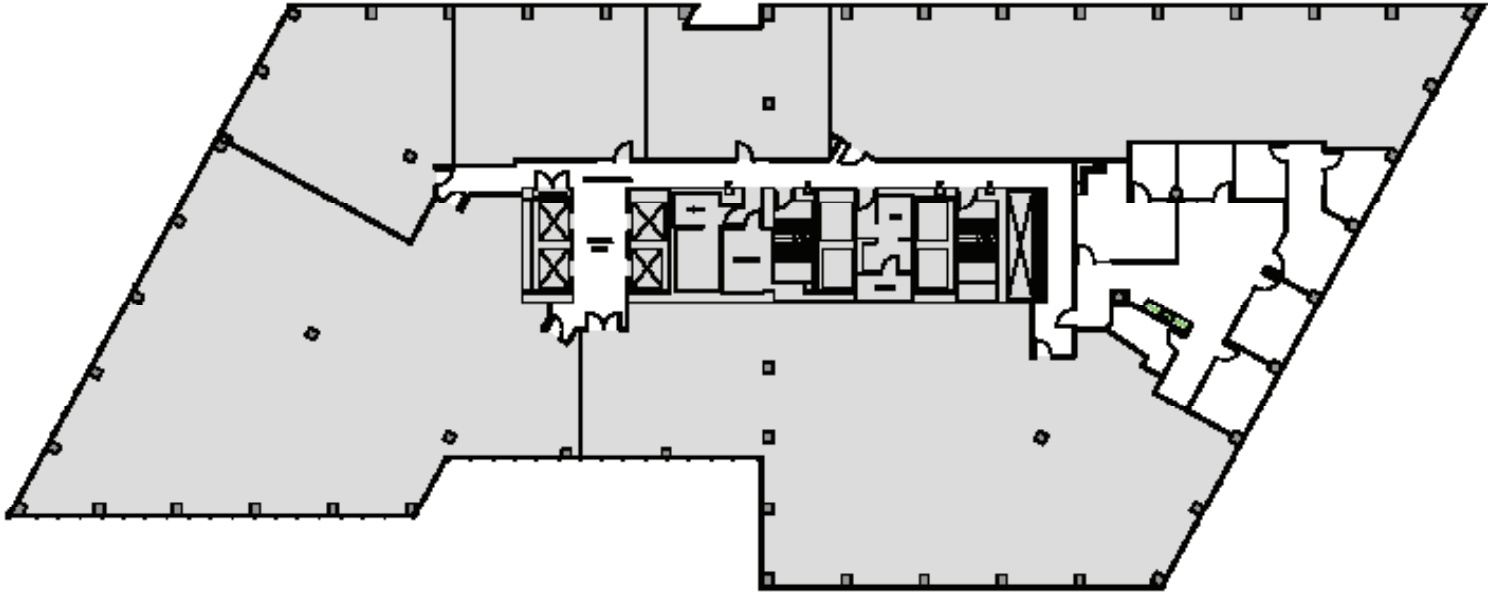
FOURTH & BLANCHARD

2101 Fourth Avenue
Seattle, WA 98121

10TH FLOOR

Rentable square feet: 2,547

Available Leased



N >

Schedule a Tour
206-467-7600

FOR LEASE

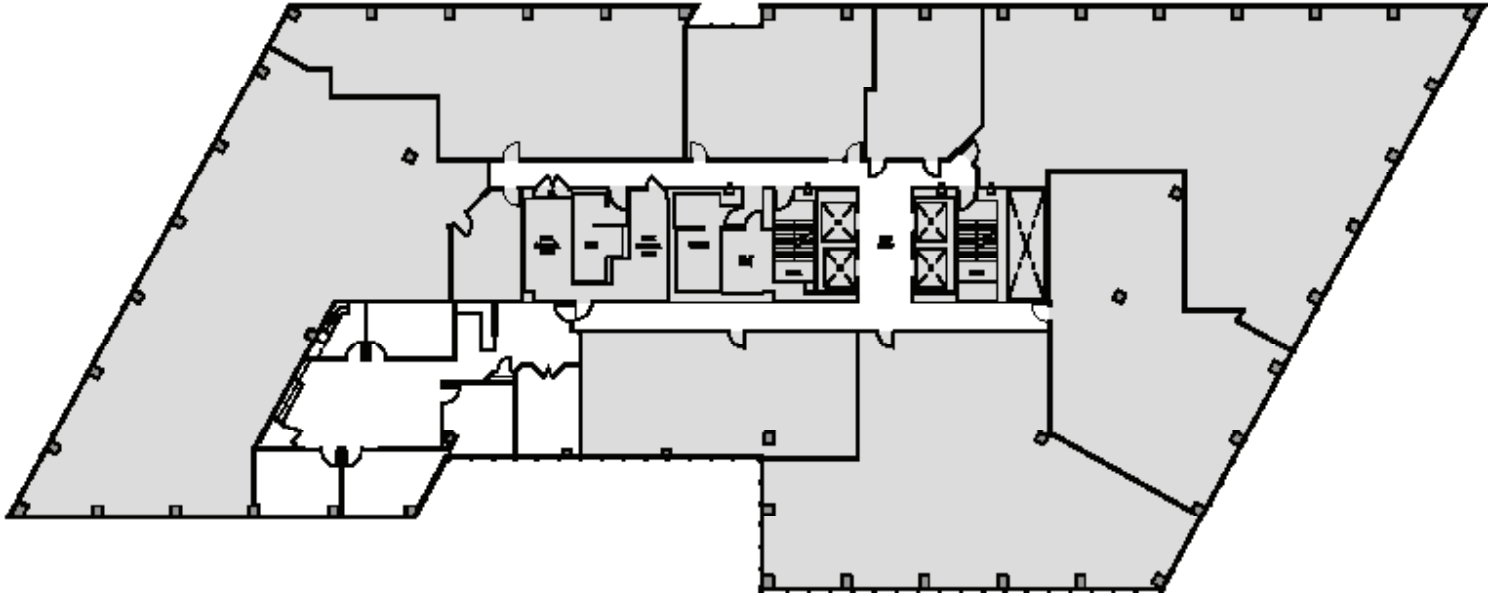
FOURTH & BLANCHARD

2101 Fourth Avenue
Seattle, WA 98121

13TH FLOOR

Rentable square feet: 2,319

Available Leased



N >

Schedule a Tour
206-467-7600

FOR LEASE

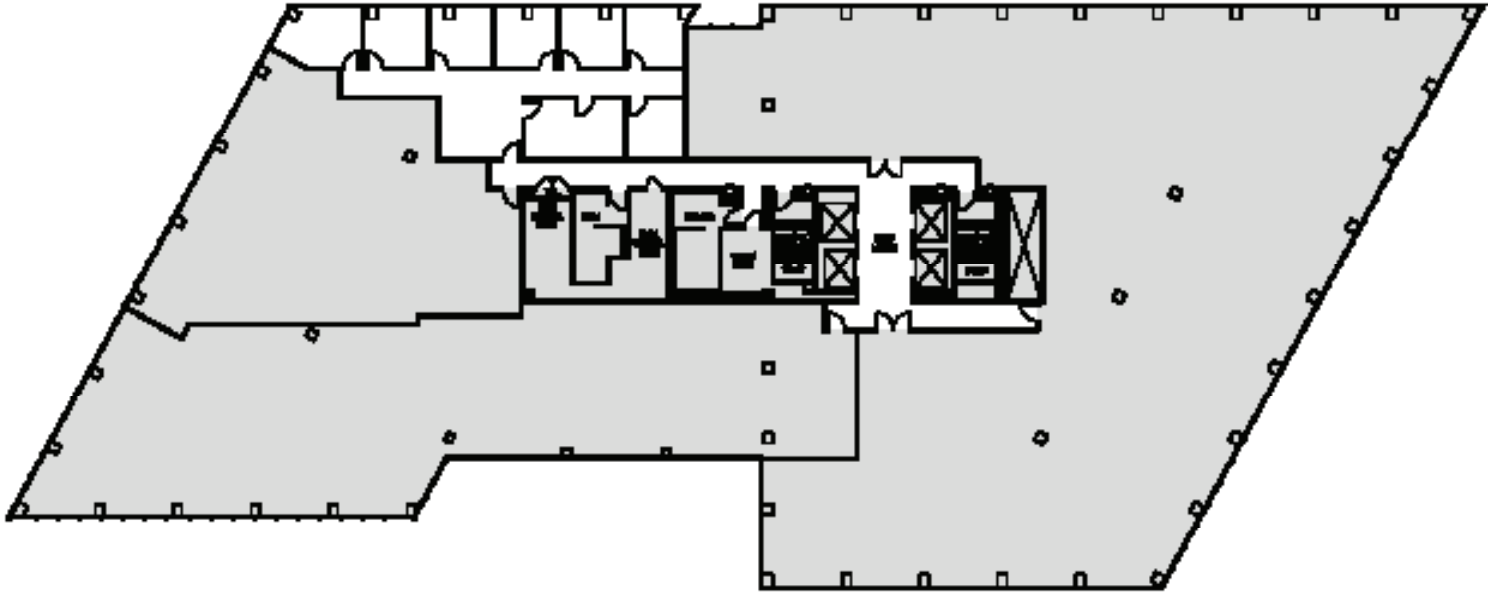
FOURTH & BLANCHARD

2101 Fourth Avenue
Seattle, WA 98121

13TH FLOOR

Rentable square feet: 1,950

Available Leased



N >

Schedule a Tour
206-467-7600

FOR LEASE

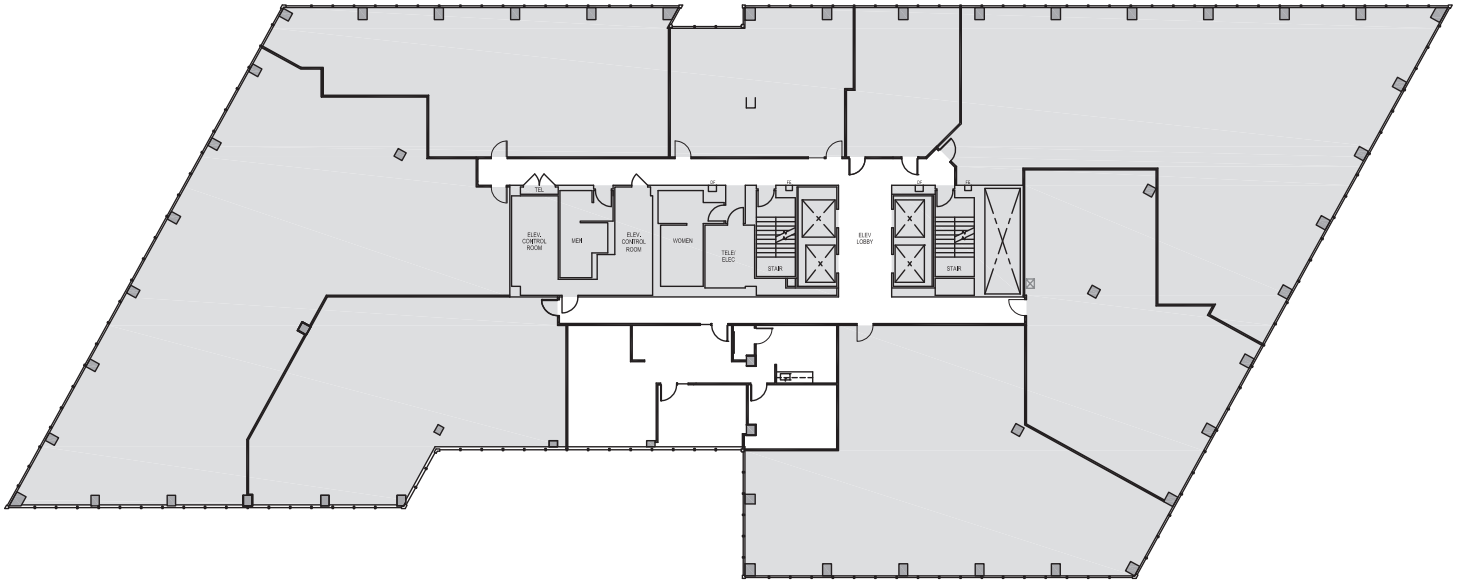
FOURTH & BLANCHARD

2101 Fourth Avenue
Seattle, WA 98121

13TH FLOOR

Rentable square feet: 1,433

Available Leased



N >

Schedule a Tour
206-467-7600

FOR LEASE

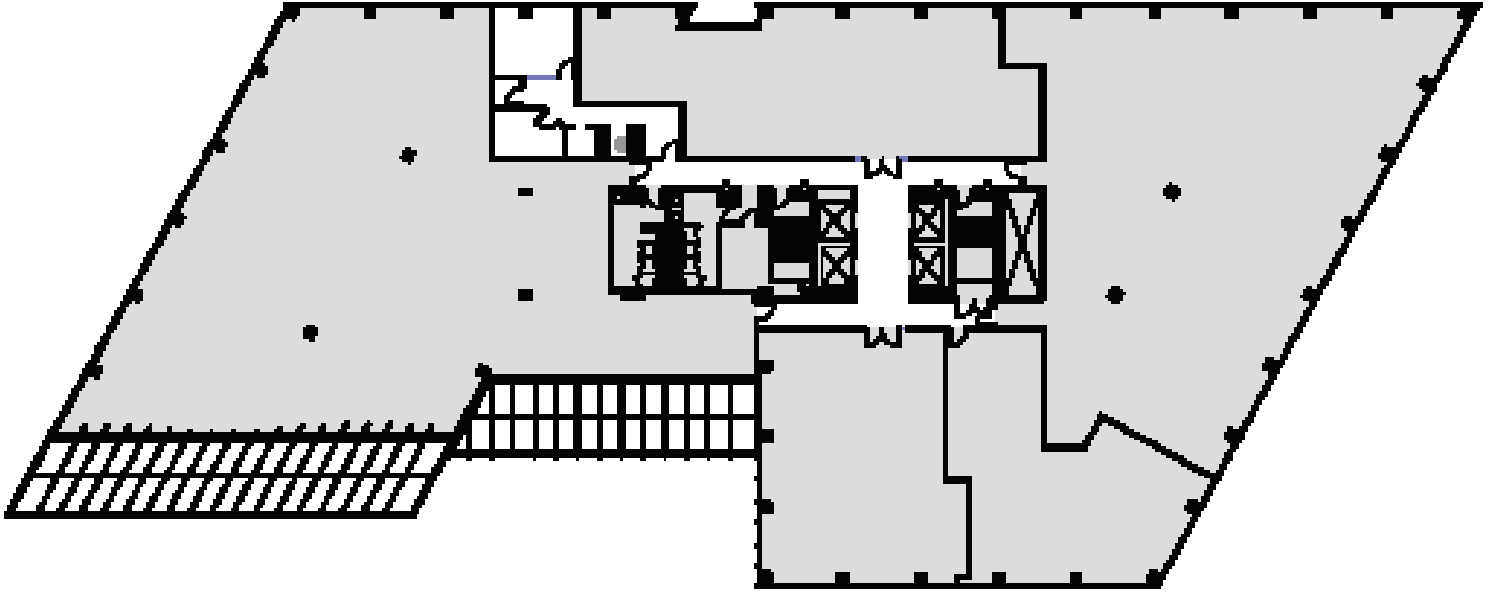
FOURTH & BLANCHARD

2101 Fourth Avenue
Seattle, WA 98121

15TH FLOOR

Rentable square feet: 732

Available Leased



N >

Schedule a Tour
206-467-7600

FOR LEASE

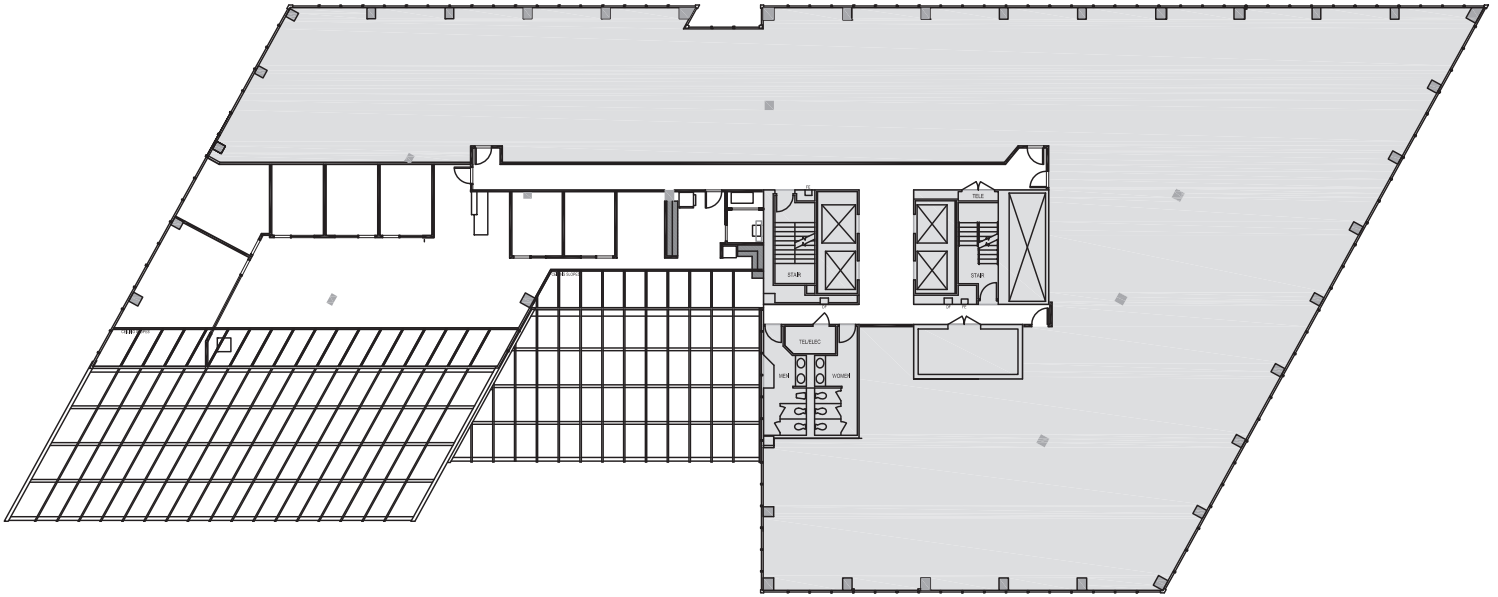
FOURTH & BLANCHARD

2101 Fourth Avenue
Seattle, WA 98121

16TH FLOOR

Rentable square feet: 4,011

Available Leased



N >

Schedule a Tour
206-467-7600

FOR LEASE

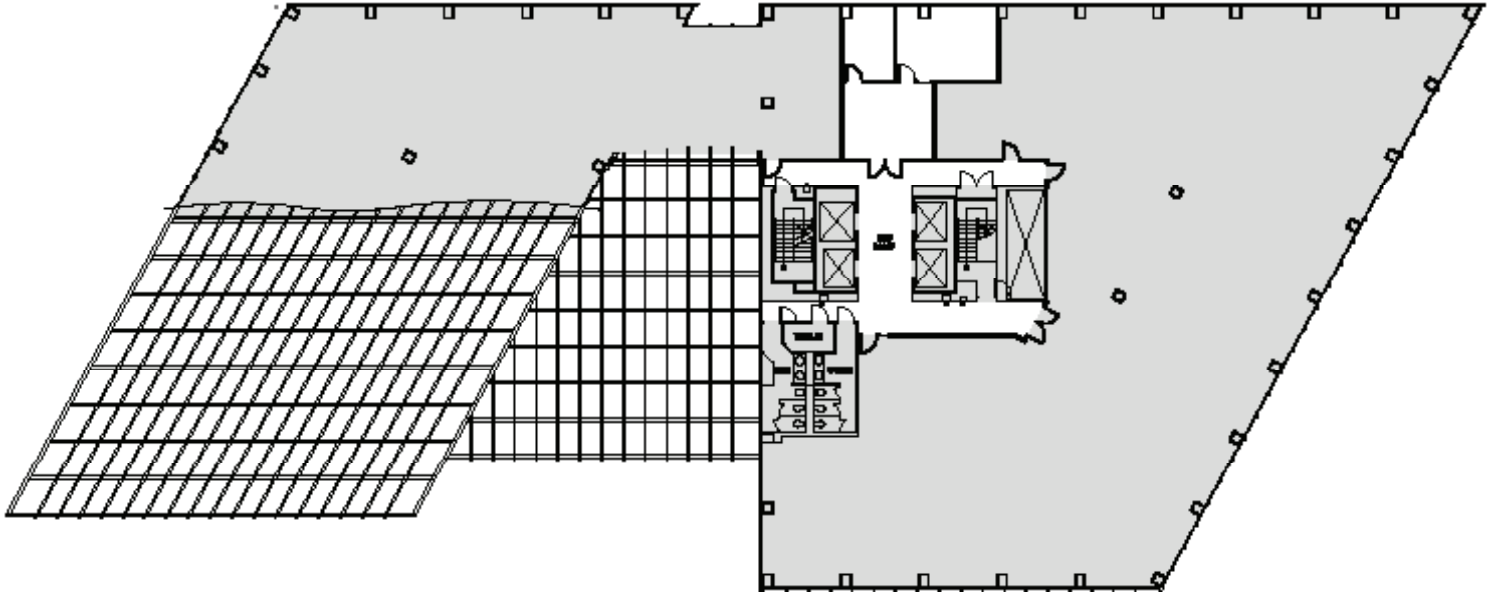
FOURTH & BLANCHARD

2101 Fourth Avenue
Seattle, WA 98121

18TH FLOOR

Rentable square feet: 741

Available Leased



N >

Schedule a Tour
206-467-7600

FOR LEASE

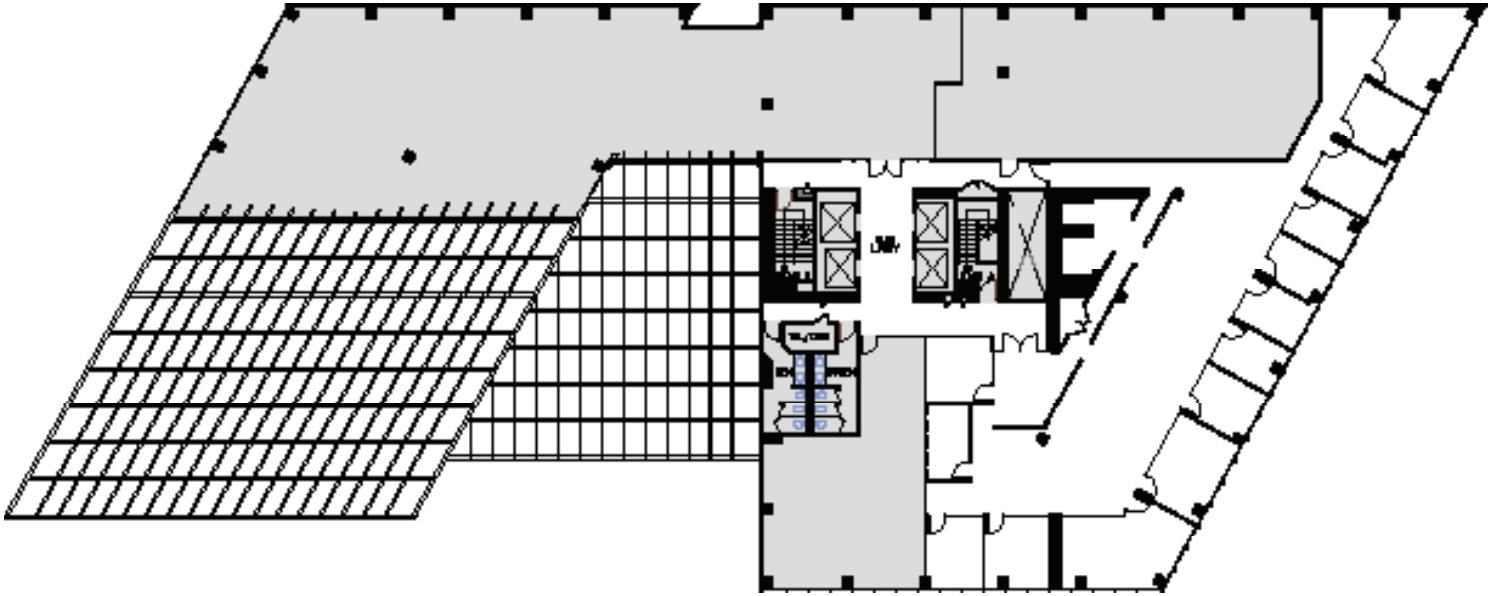
FOURTH & BLANCHARD

2101 Fourth Avenue
Seattle, WA 98121

18TH FLOOR

Rentable square feet: 5,925

Available Leased



N >

Schedule a Tour
206-467-7600

FOR LEASE

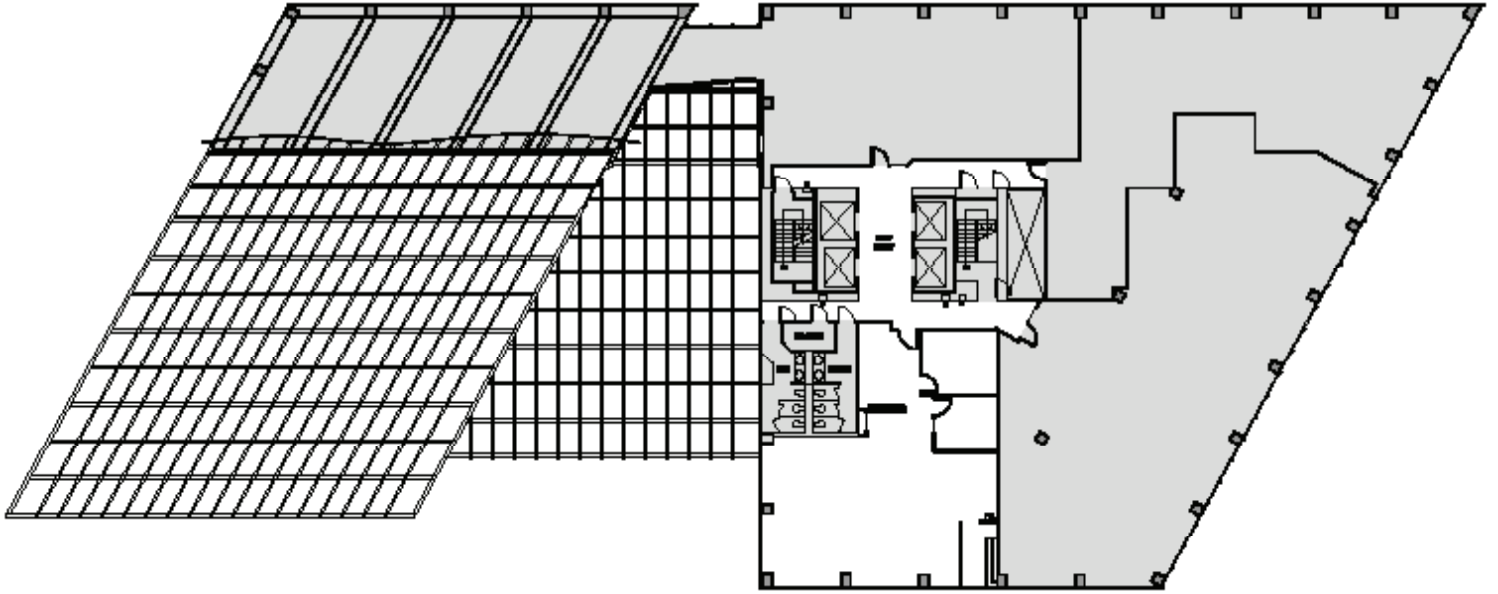
FOURTH & BLANCHARD

2101 Fourth Avenue
Seattle, WA 98121

19TH FLOOR

Rentable square feet: 1,887

Available Leased



N >

Schedule a Tour
206-467-7600

FOR LEASE

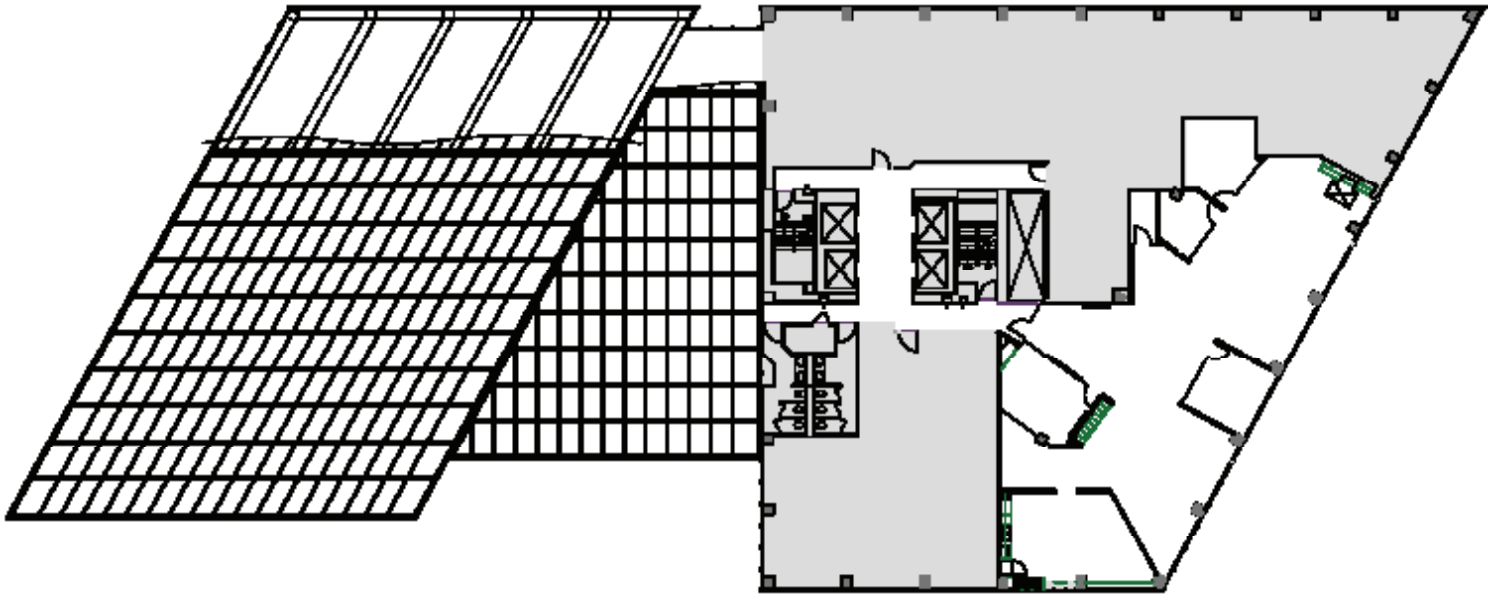
FOURTH & BLANCHARD

2101 Fourth Avenue
Seattle, WA 98121

19TH FLOOR

Rentable square feet: 4,080

Available Leased



N >