

Schedule a Tour  
206-467-7600



MARTIN SELIG  
REAL ESTATE

# FOR LEASE



Martin Selig  
mselig@martinselg.com



Jordan Selig  
jselig@martinselg.com



Theresa Howard  
thoward@martinselg.com



Mike Brixner  
mbrixner@martinselg.com



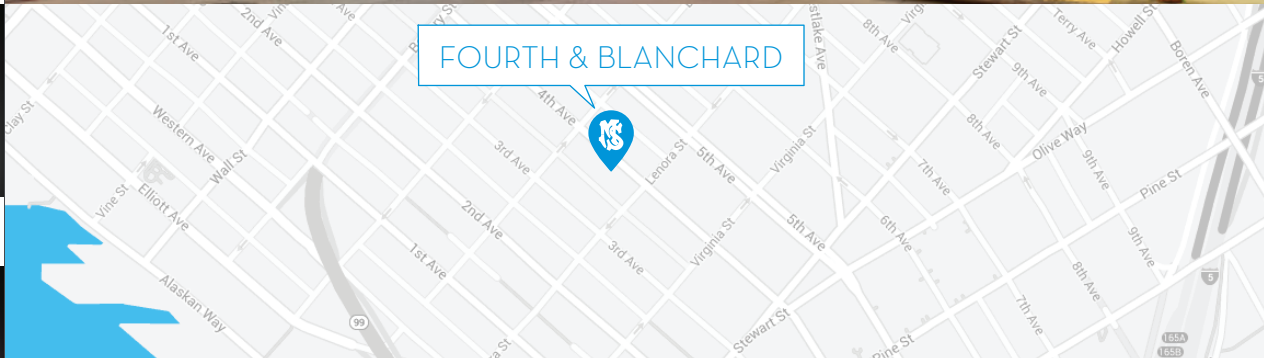
Ilich Vahimi  
ivahimi@martinselg.com



Michael Brixner  
mcbrixner@martinselg.com



David Selig  
dselig@martinselg.com



### Building Features:

- Custom build-outs available
- Indoor parking
- Highest-security high-rise in Seattle
- Starbucks and deli in lobby
- Landmark structure featuring iconic architecture
- Pet-friendly
- Bike storage
- On-site showers & locker rooms
- Local lunch delivery from Peach

### Neighborhood Features:

- Excellent highway access
- Easy access to Pike Place Market
- Surrounded by retail, banks and restaurants
- Two blocks to retail core and transit tunnel

## FOURTH & BLANCHARD

2101 Fourth Avenue  
Seattle, WA 98121

**Available Square Footage: 124,570**

CALL US TO SCHEDULE A TOUR | 206-467-7600 | martinselg.com

Schedule a Tour  
206-467-7600

# FOR LEASE

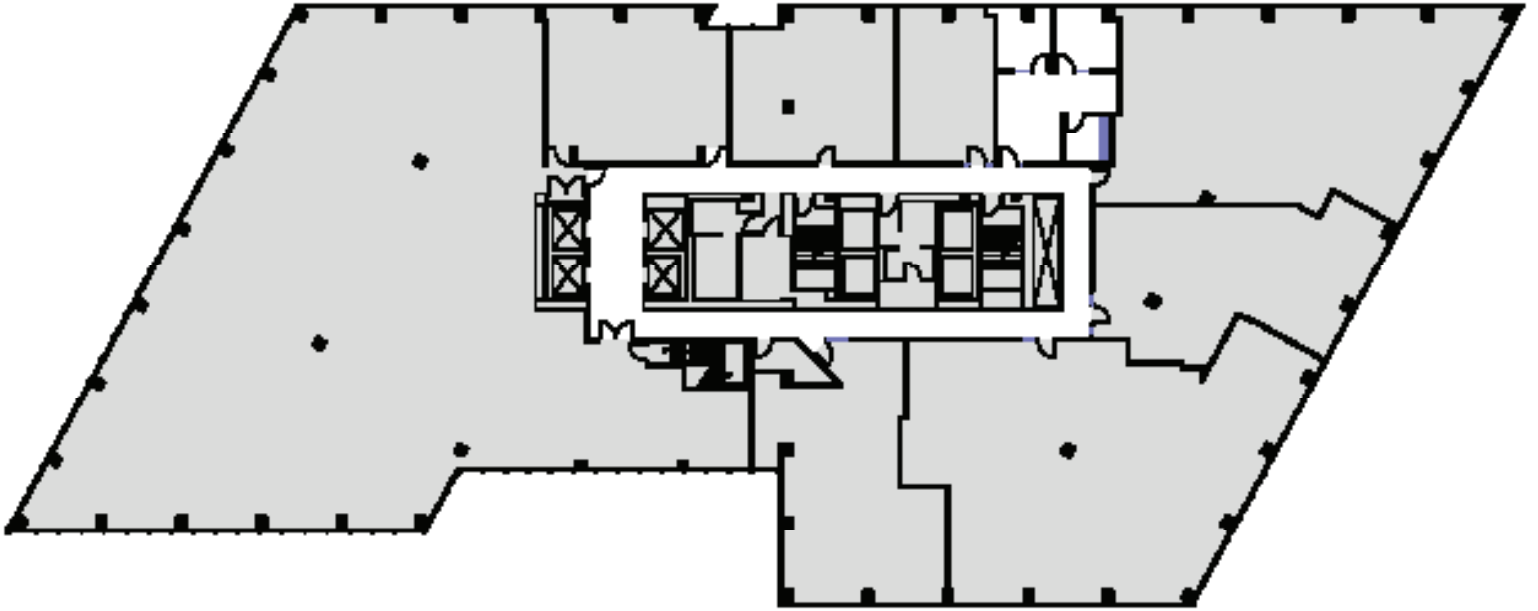
## FOURTH & BLANCHARD

2101 Fourth Avenue  
Seattle, WA 98121

3rd FLOOR

Rentable square feet: 716

Available  Leased



N >

Schedule a Tour  
206-467-7600

# FOR LEASE

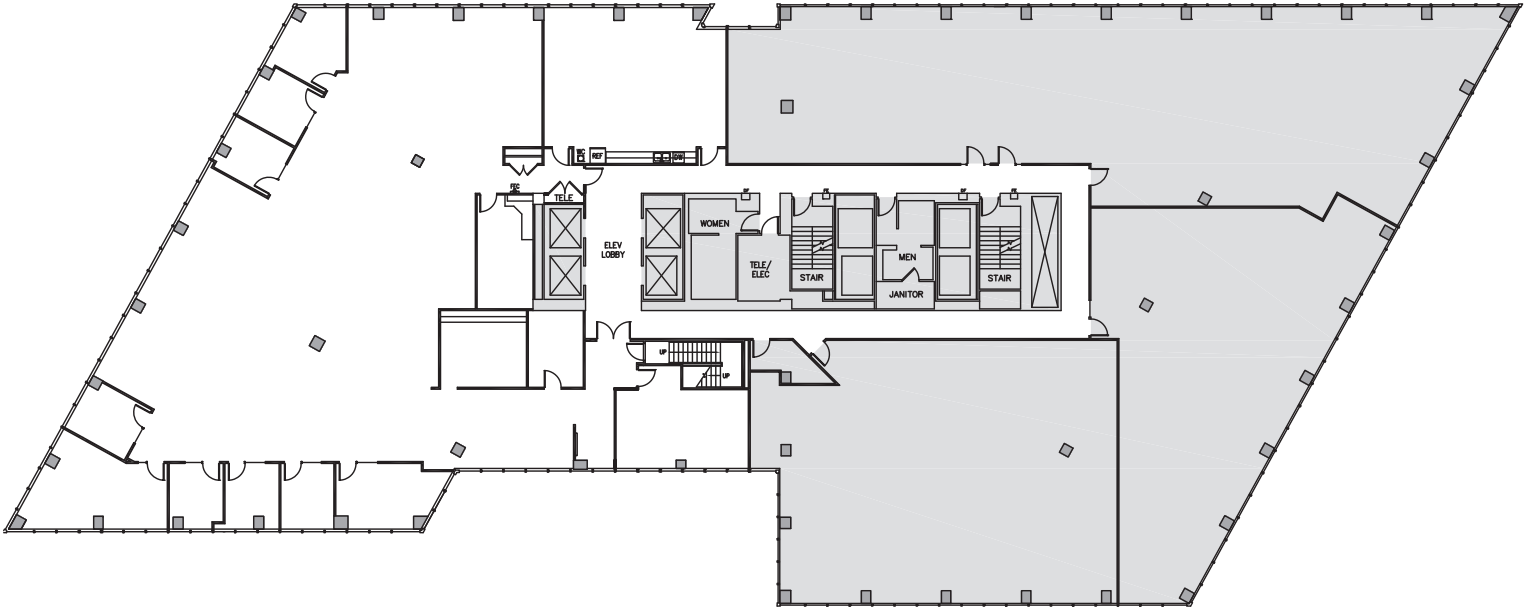
## FOURTH & BLANCHARD

2101 Fourth Avenue  
Seattle, WA 98121

### 3rd FLOOR

Rentable square feet: 9,646

Available  Leased



N >

Schedule a Tour  
206-467-7600

# FOR LEASE

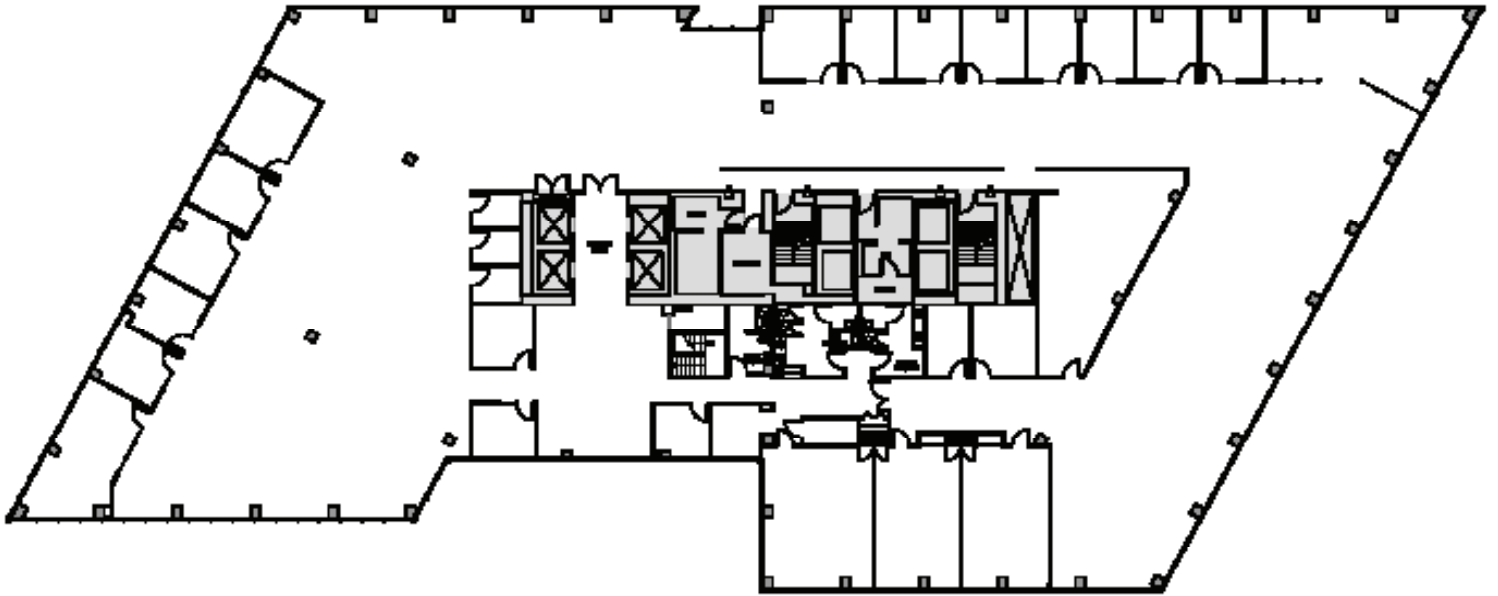
## FOURTH & BLANCHARD

2101 Fourth Avenue  
Seattle, WA 98121

### 4TH FLOOR

Rentable square feet: 20,882

Available  Leased



N >





Schedule a Tour  
206-467-7600

# FOR LEASE

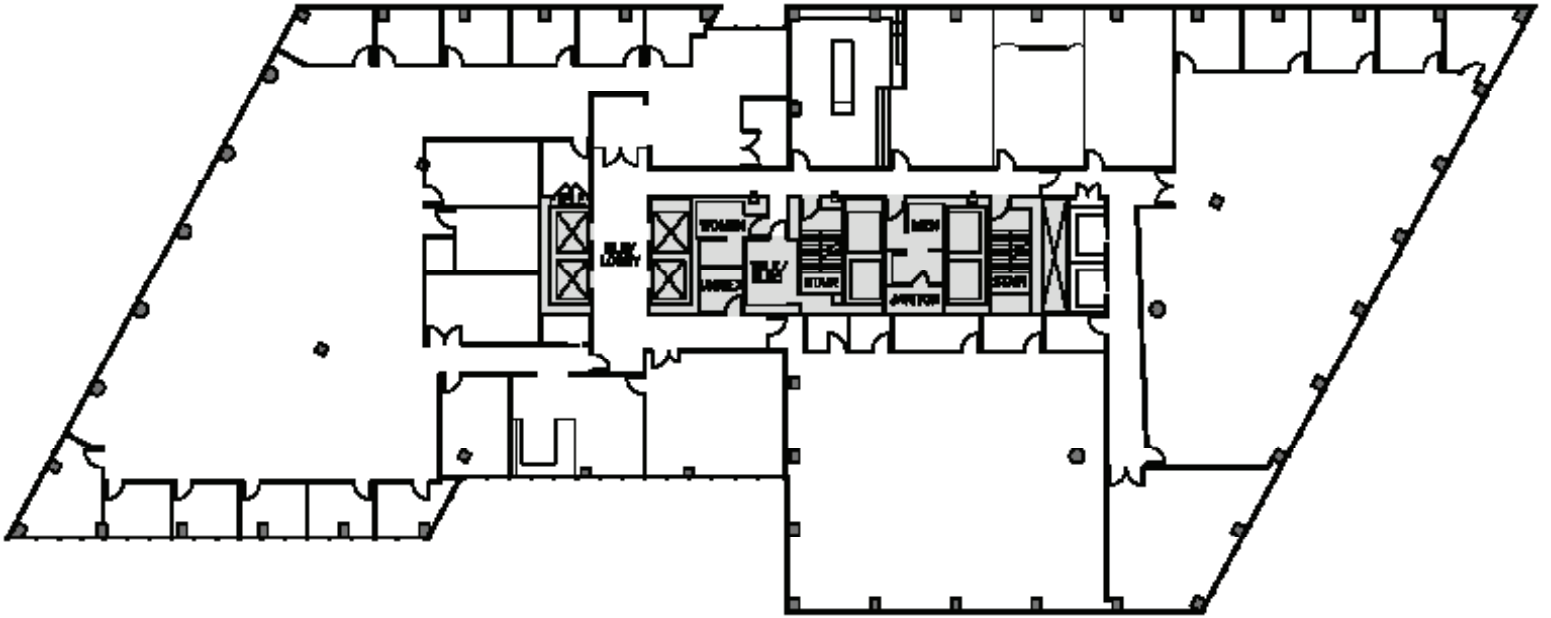
## FOURTH & BLANCHARD

2101 Fourth Avenue  
Seattle, WA 98121

### 5TH FLOOR

Rentable square feet: 20,871

Available  Leased



Schedule a Tour  
206-467-7600

# FOR LEASE

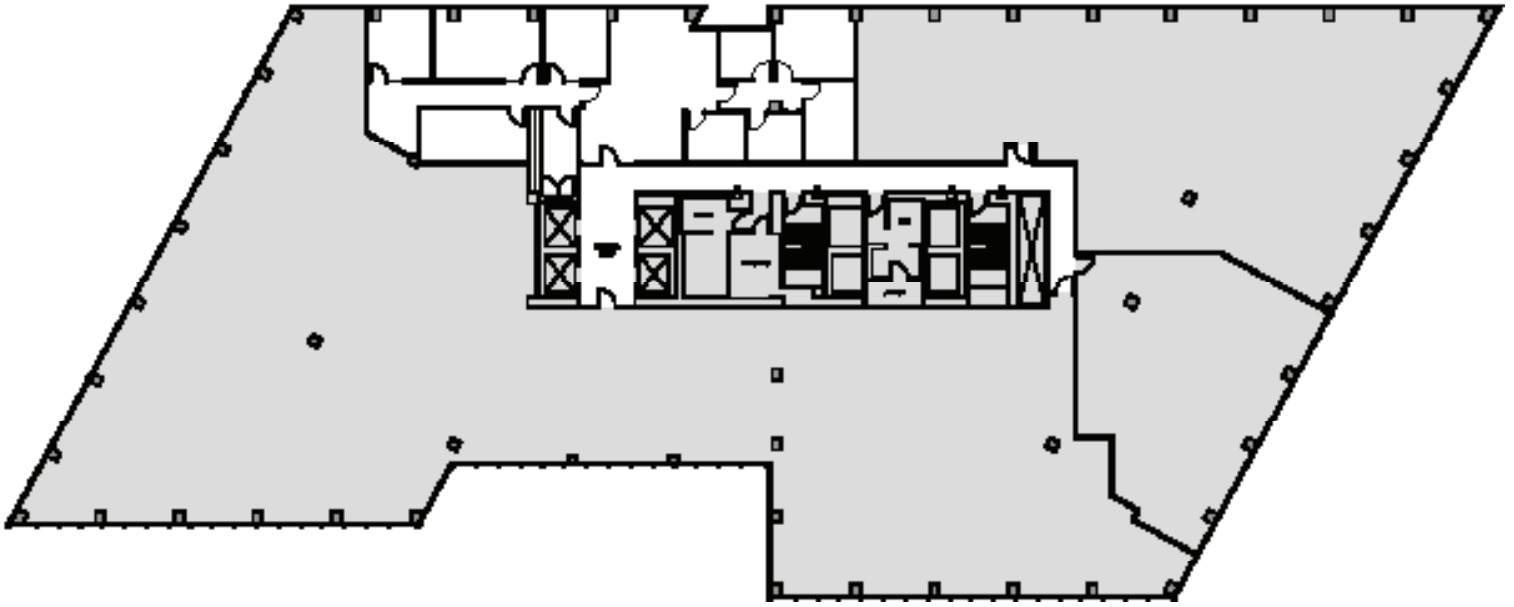
## FOURTH & BLANCHARD

2101 Fourth Avenue  
Seattle, WA 98121

### 6TH FLOOR

Rentable square feet: 2,788

Available  Leased



N >



Schedule a Tour  
206-467-7600

# FOR LEASE

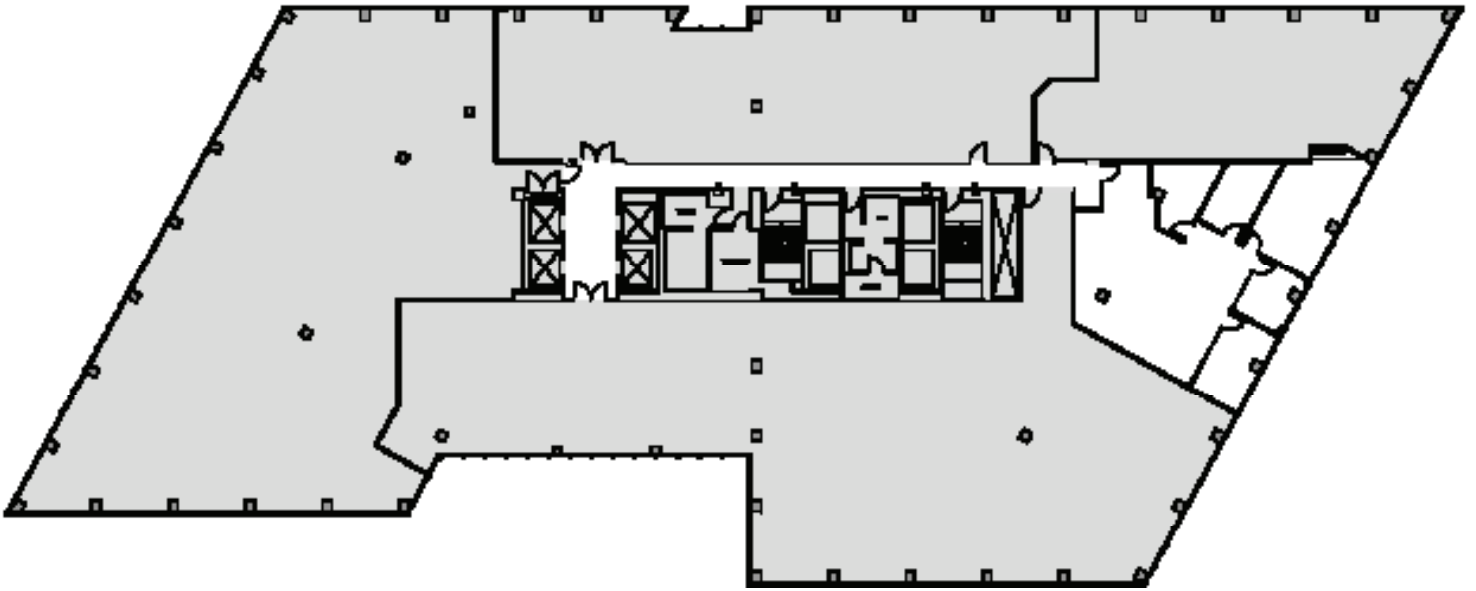
## FOURTH & BLANCHARD

2101 Fourth Avenue  
Seattle, WA 98121

### 7TH FLOOR

Rentable square feet: 2,082

Available  Leased



N >

Schedule a Tour  
206-467-7600

# FOR LEASE

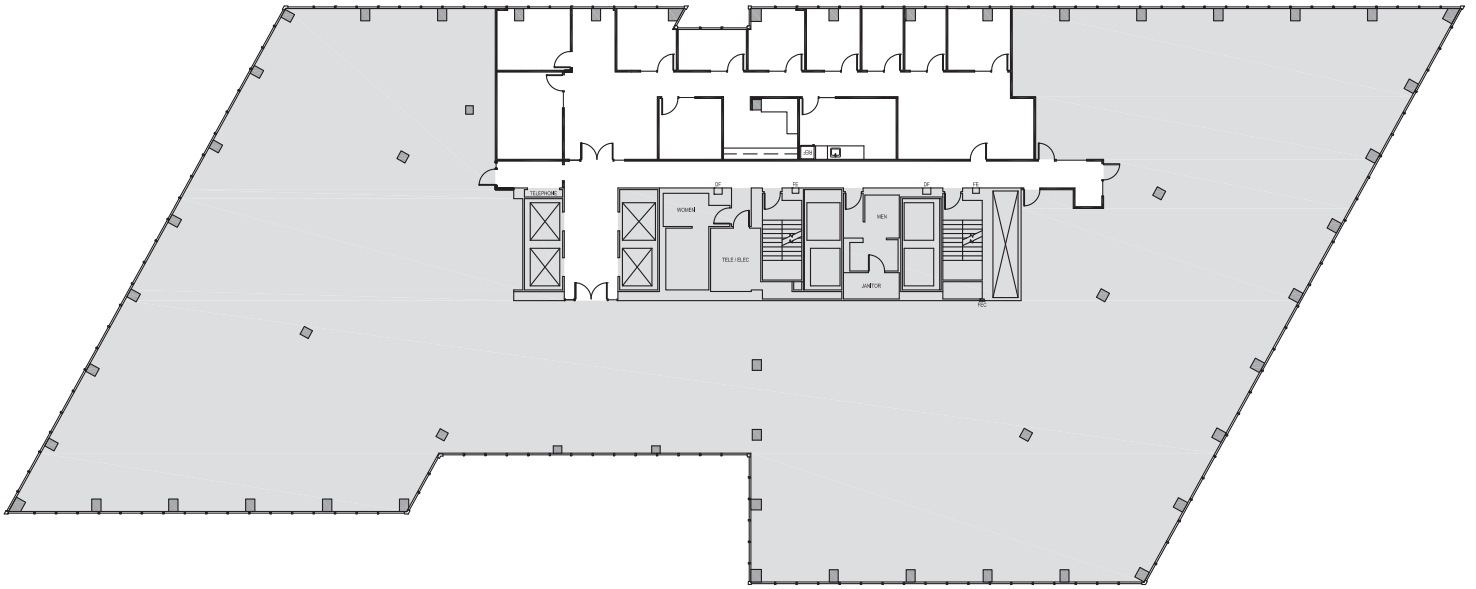
## FOURTH & BLANCHARD

2101 Fourth Avenue  
Seattle, WA 98121

### 7TH FLOOR

Rentable square feet: 3,046

Available  Leased



N >

Schedule a Tour  
206-467-7600

# FOR LEASE

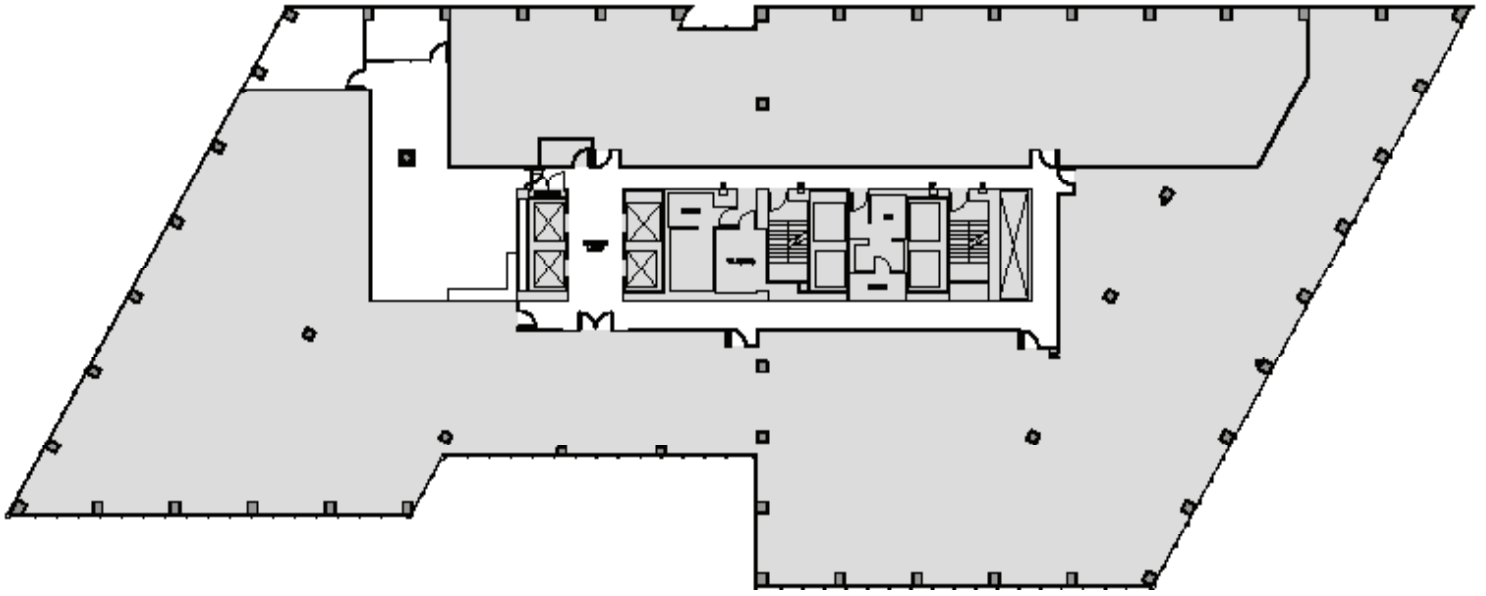
## FOURTH & BLANCHARD

2101 Fourth Avenue  
Seattle, WA 98121

### 8TH FLOOR

Rentable square feet: 1,630

Available  Leased



N >

Schedule a Tour  
206-467-7600

# FOR LEASE

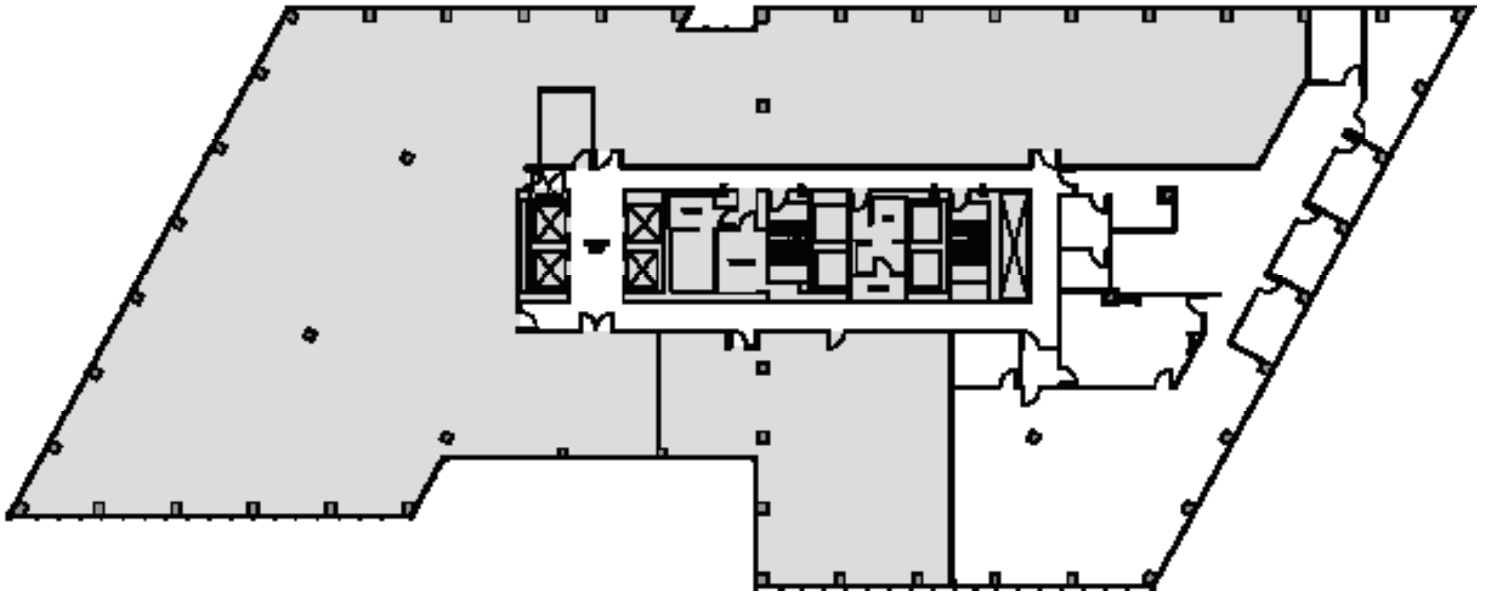
## FOURTH & BLANCHARD

2101 Fourth Avenue  
Seattle, WA 98121

### 8TH FLOOR

Rentable square feet: 5,575

Available  Leased



N >

Schedule a Tour  
206-467-7600

# FOR LEASE

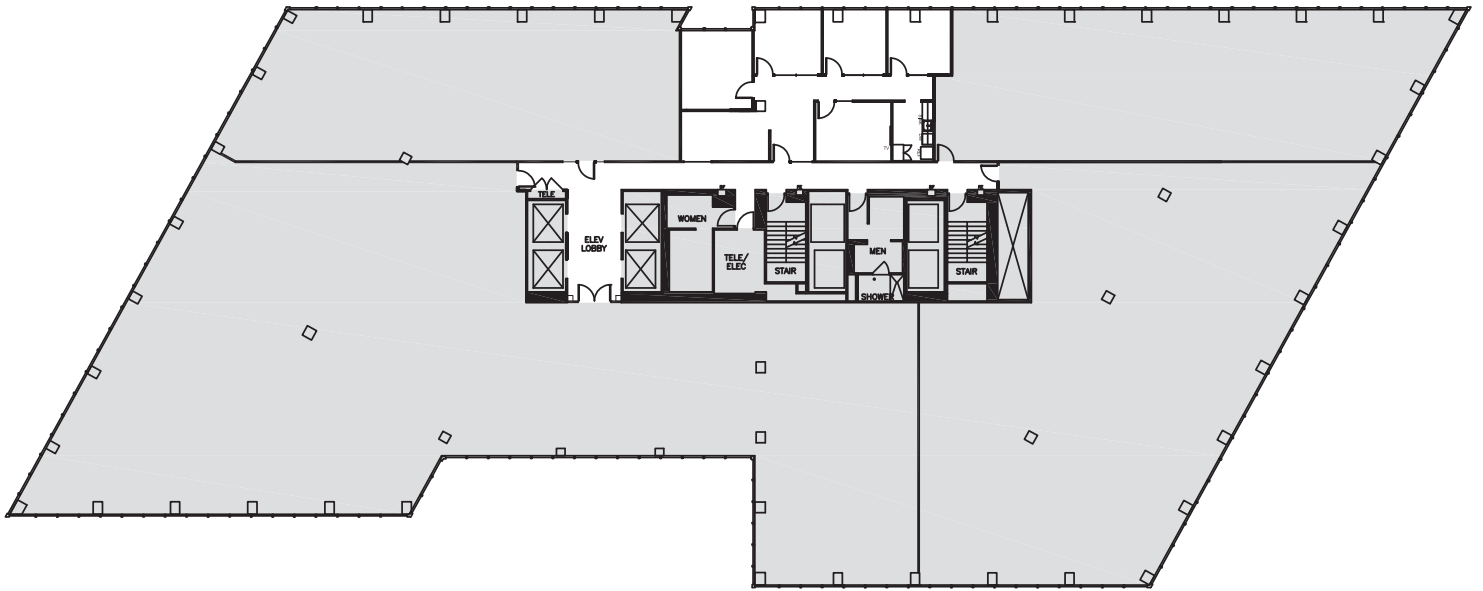
## FOURTH & BLANCHARD

2101 Fourth Avenue  
Seattle, WA 98121

### 9TH FLOOR

Rentable square feet: 1,477

Available  Leased



N >

Schedule a Tour  
206-467-7600

# FOR LEASE

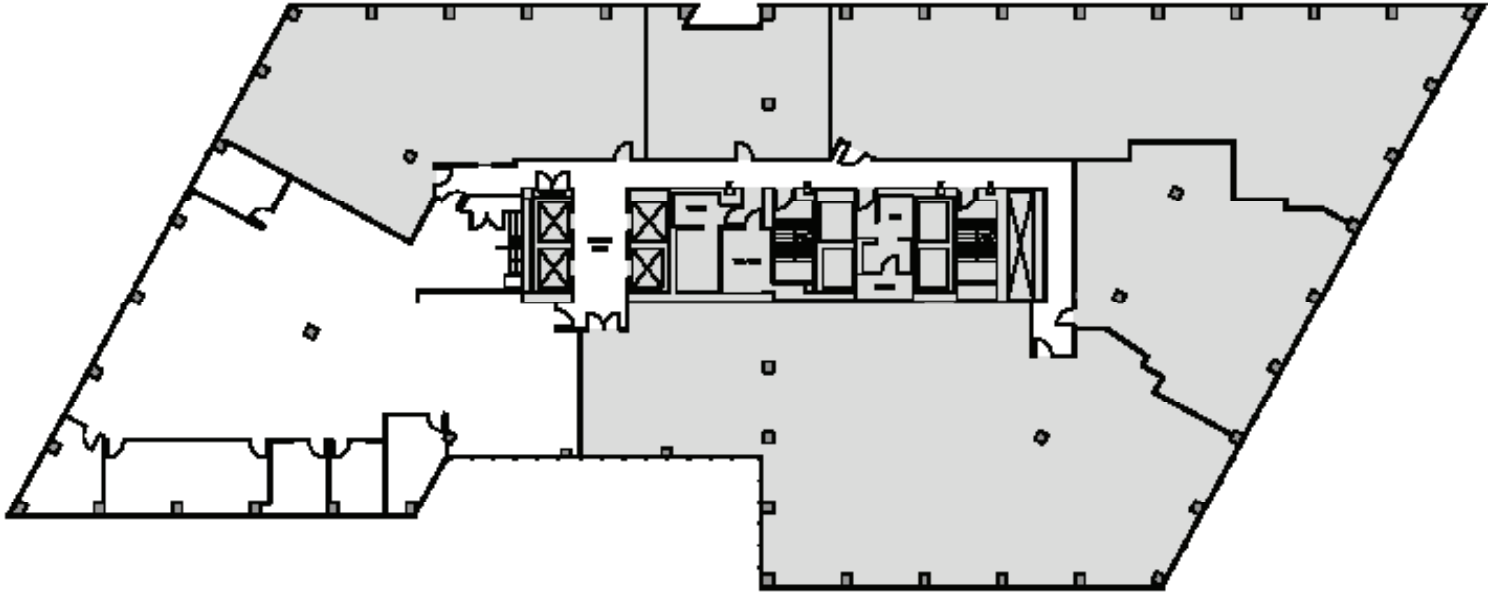
## FOURTH & BLANCHARD

2101 Fourth Avenue  
Seattle, WA 98121

### 10TH FLOOR

Rentable square feet: 5,492

Available  Leased



N >

Schedule a Tour  
206-467-7600

# FOR LEASE

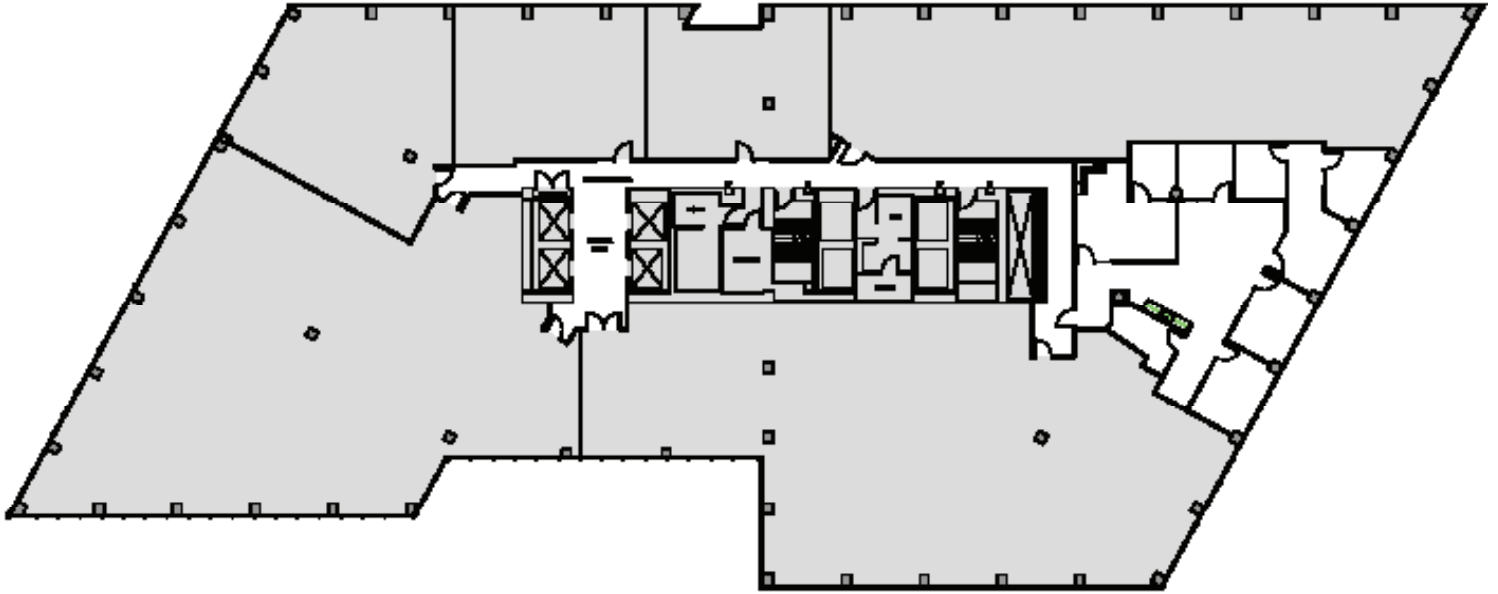
## FOURTH & BLANCHARD

2101 Fourth Avenue  
Seattle, WA 98121

### 10TH FLOOR

Rentable square feet: 2,547

Available  Leased



N >

Schedule a Tour  
206-467-7600

# FOR LEASE

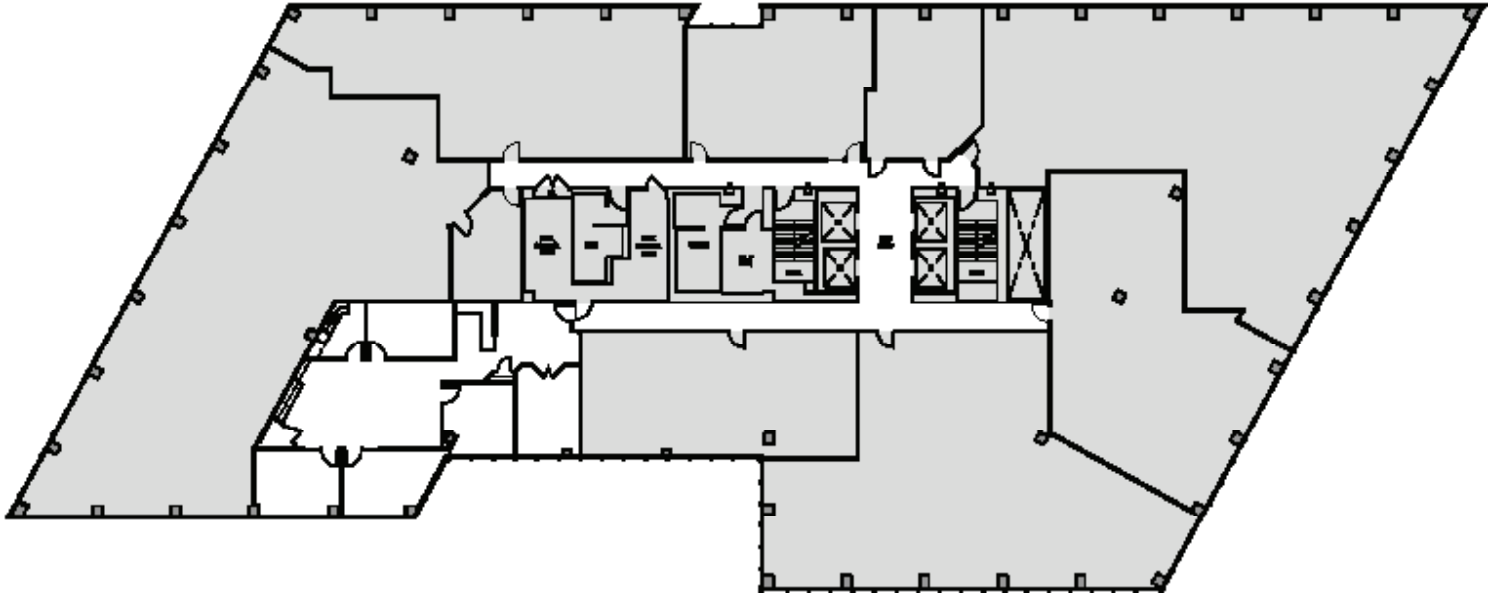
## FOURTH & BLANCHARD

2101 Fourth Avenue  
Seattle, WA 98121

13TH FLOOR

Rentable square feet: 2,319

Available  Leased



N >



Schedule a Tour  
206-467-7600

# FOR LEASE

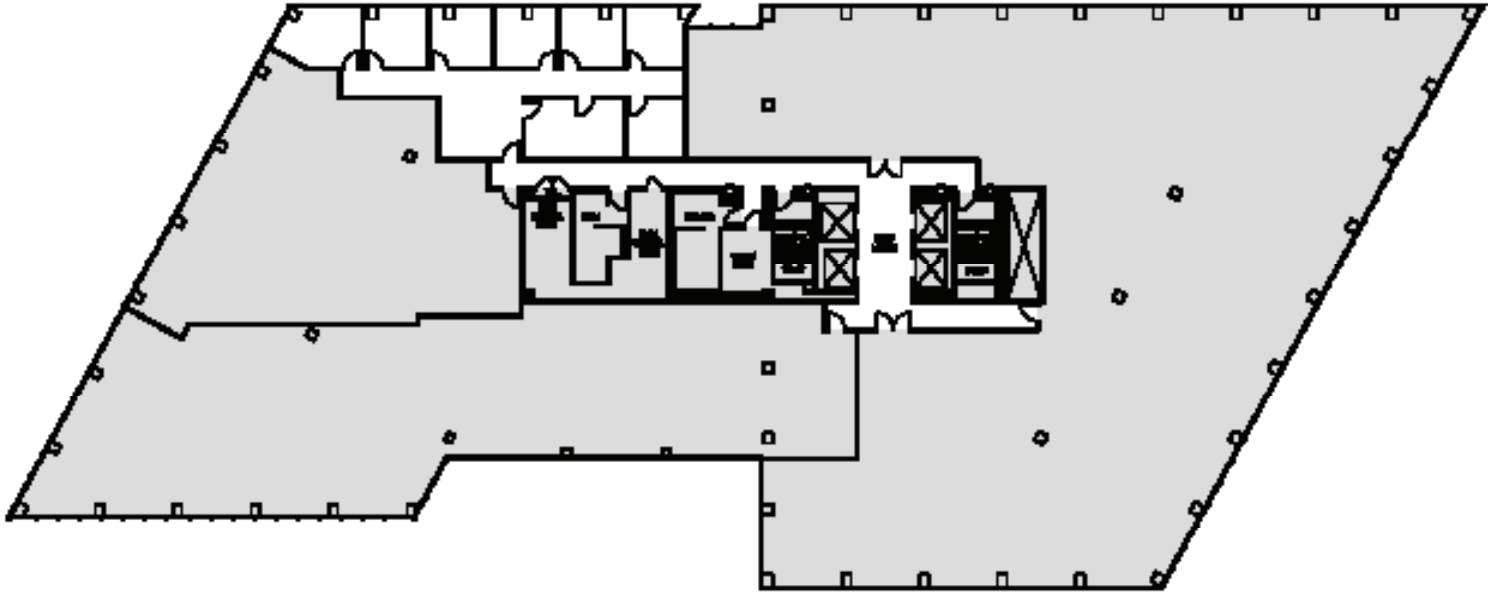
## FOURTH & BLANCHARD

2101 Fourth Avenue  
Seattle, WA 98121

13TH FLOOR

Rentable square feet: 1,950

Available  Leased



N >

Schedule a Tour  
206-467-7600

# FOR LEASE

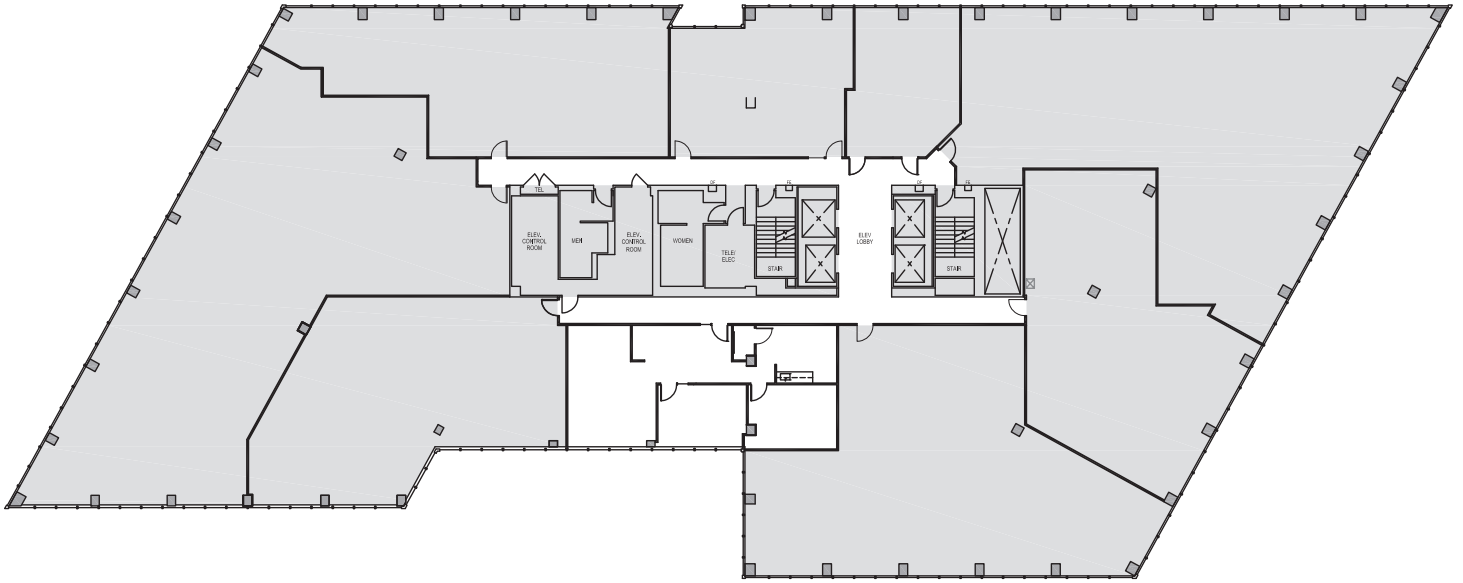
## FOURTH & BLANCHARD

2101 Fourth Avenue  
Seattle, WA 98121

### 13TH FLOOR

Rentable square feet: 1,433

Available  Leased



N >

Schedule a Tour  
206-467-7600

# FOR LEASE

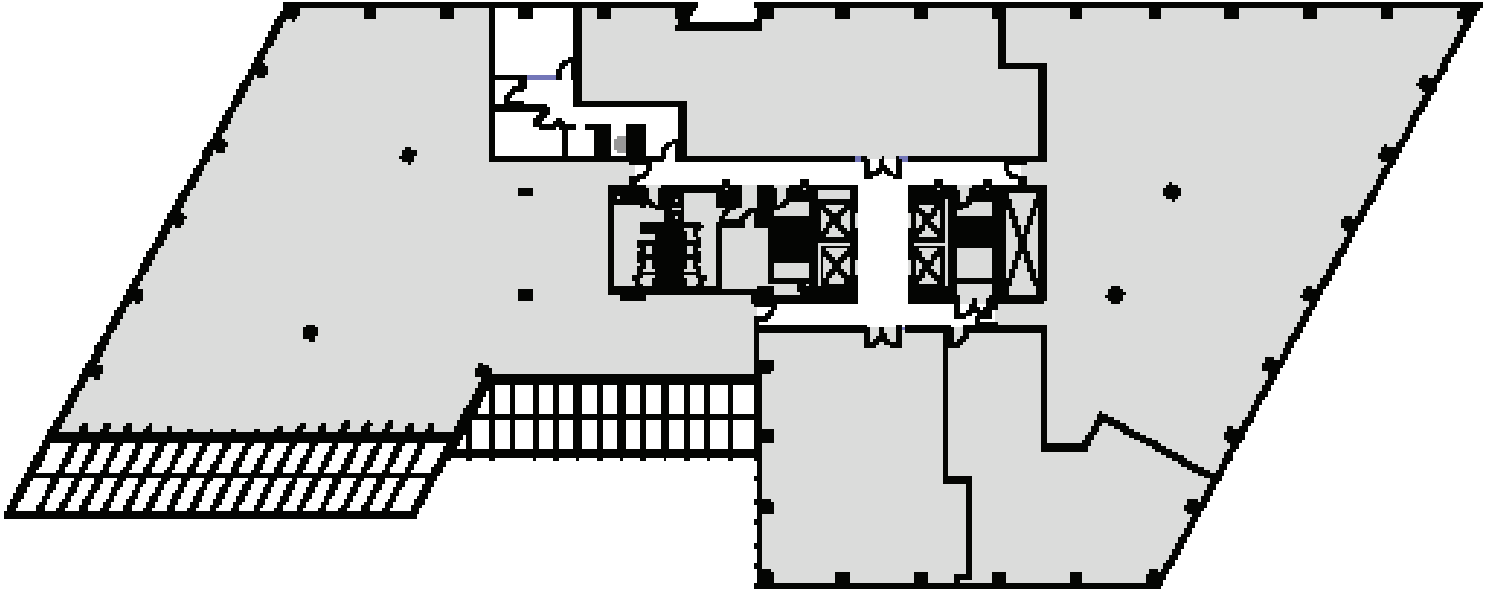
## FOURTH & BLANCHARD

2101 Fourth Avenue  
Seattle, WA 98121

15TH FLOOR

Rentable square feet: 732

Available  Leased



N >

Schedule a Tour  
206-467-7600

# FOR LEASE

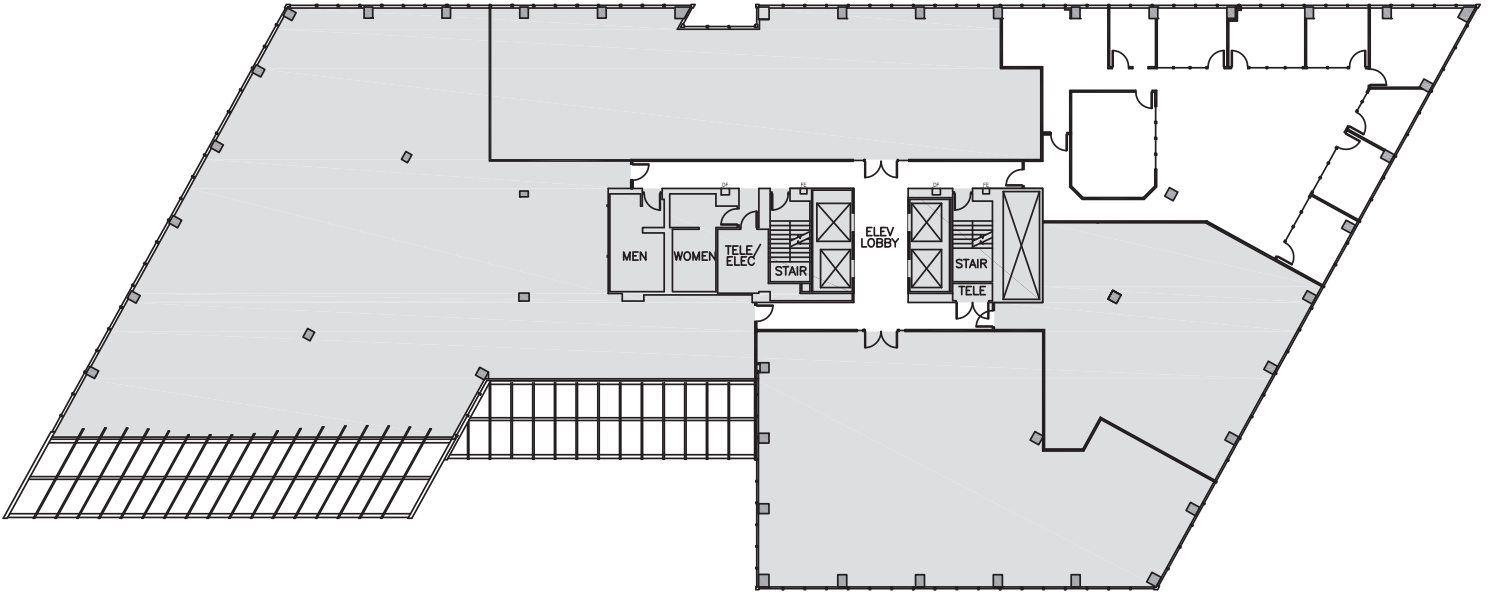
## FOURTH & BLANCHARD

2101 Fourth Avenue  
Seattle, WA 98121

### 15TH FLOOR

Rentable square feet: 3,867

Available  Leased



N >

Schedule a Tour  
206-467-7600

# FOR LEASE

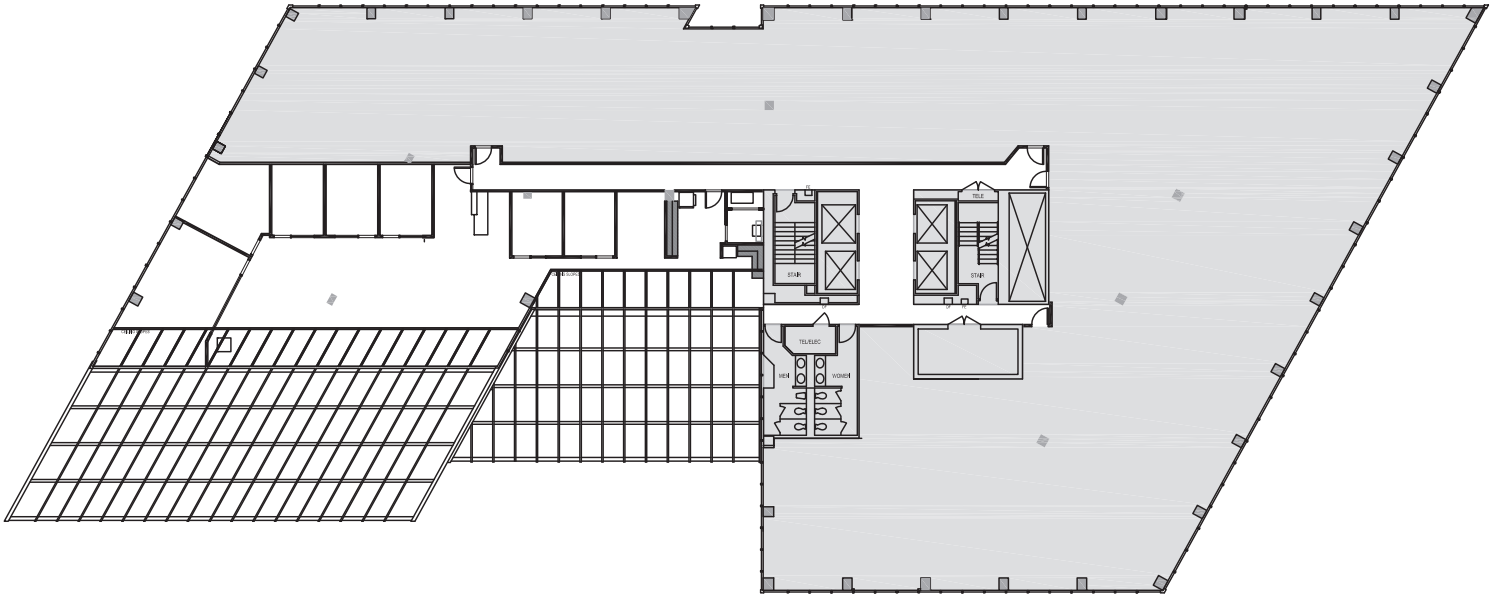
## FOURTH & BLANCHARD

2101 Fourth Avenue  
Seattle, WA 98121

### 16TH FLOOR

Rentable square feet: 4,011

Available  Leased



N >

Schedule a Tour  
206-467-7600

# FOR LEASE

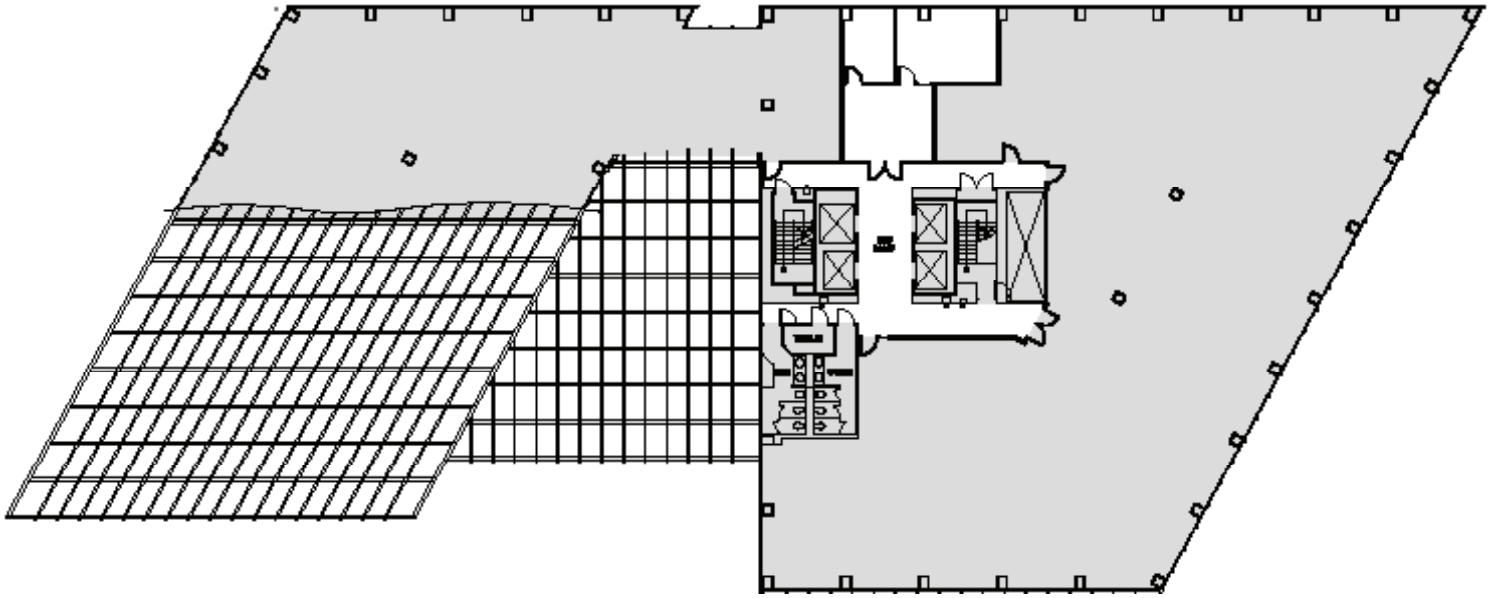
## FOURTH & BLANCHARD

2101 Fourth Avenue  
Seattle, WA 98121

### 18TH FLOOR

Rentable square feet: 739

Available  Leased



N >

Schedule a Tour  
206-467-7600

# FOR LEASE

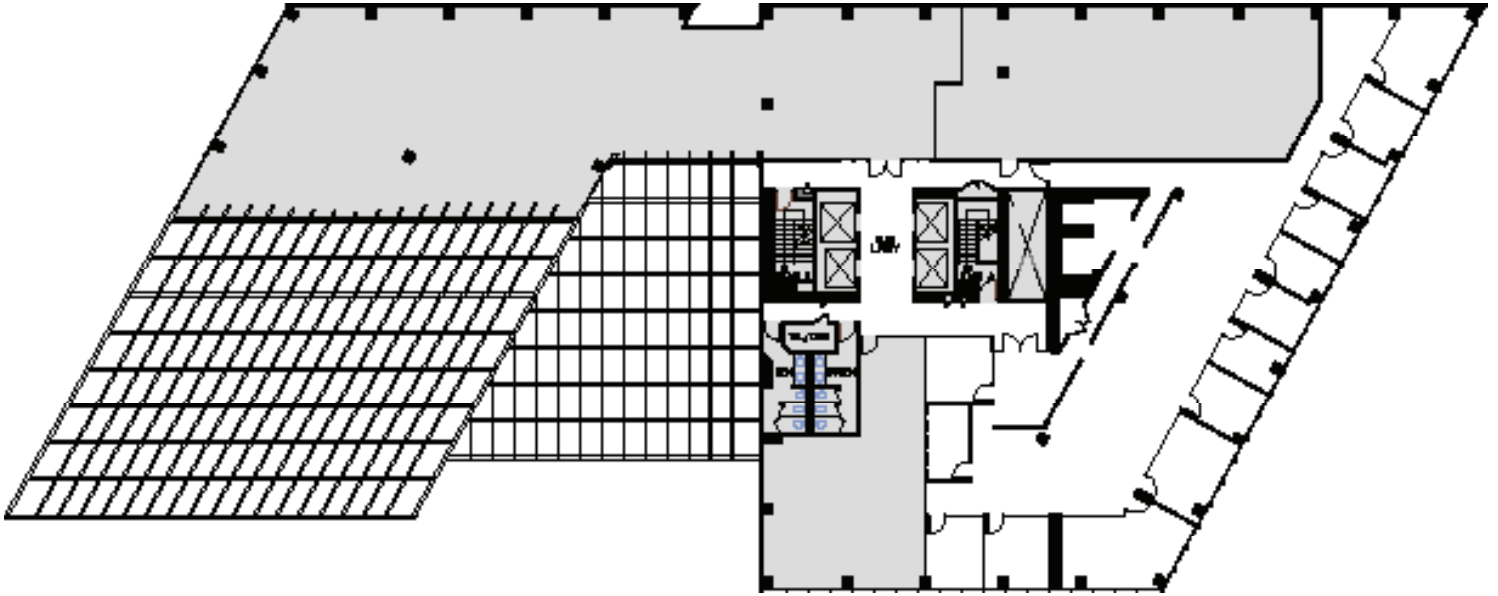
## FOURTH & BLANCHARD

2101 Fourth Avenue  
Seattle, WA 98121

### 18TH FLOOR

Rentable square feet: 5,930

Available  Leased



N >

Schedule a Tour  
206-467-7600

# FOR LEASE

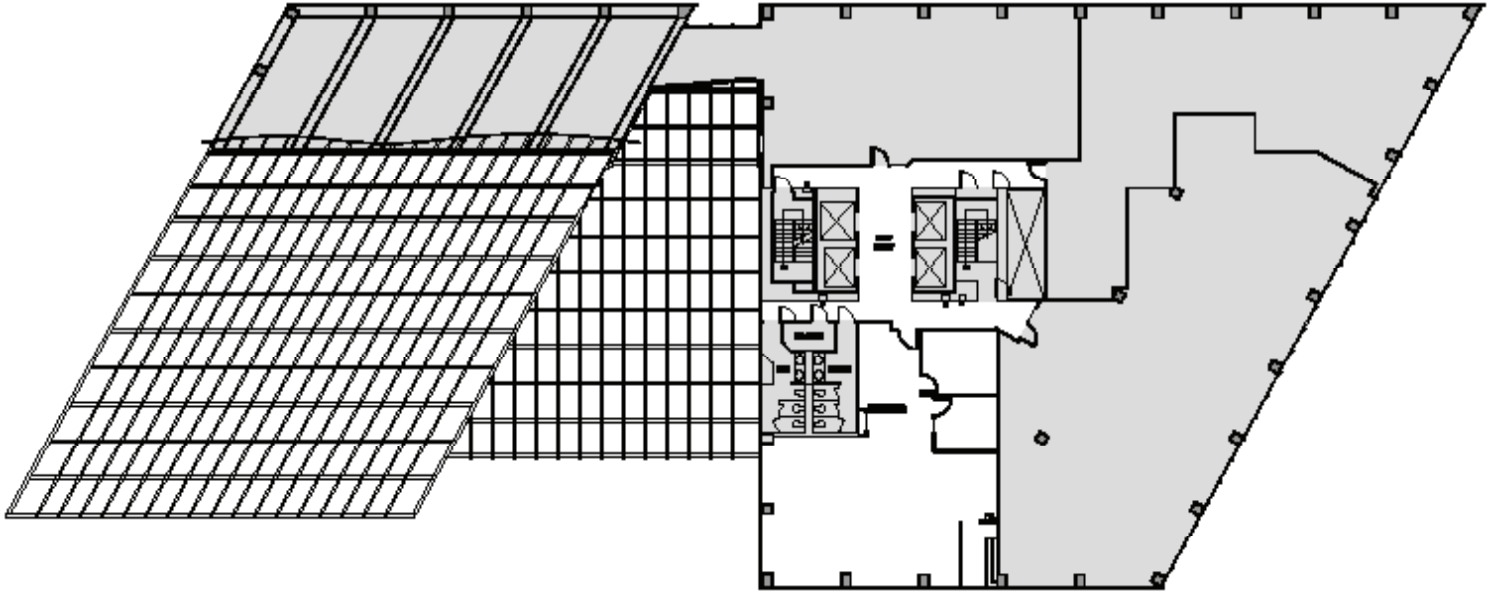
## FOURTH & BLANCHARD

2101 Fourth Avenue  
Seattle, WA 98121

19TH FLOOR

Rentable square feet: 1,887

Available  Leased



N >



Schedule a Tour  
206-467-7600

# FOR LEASE

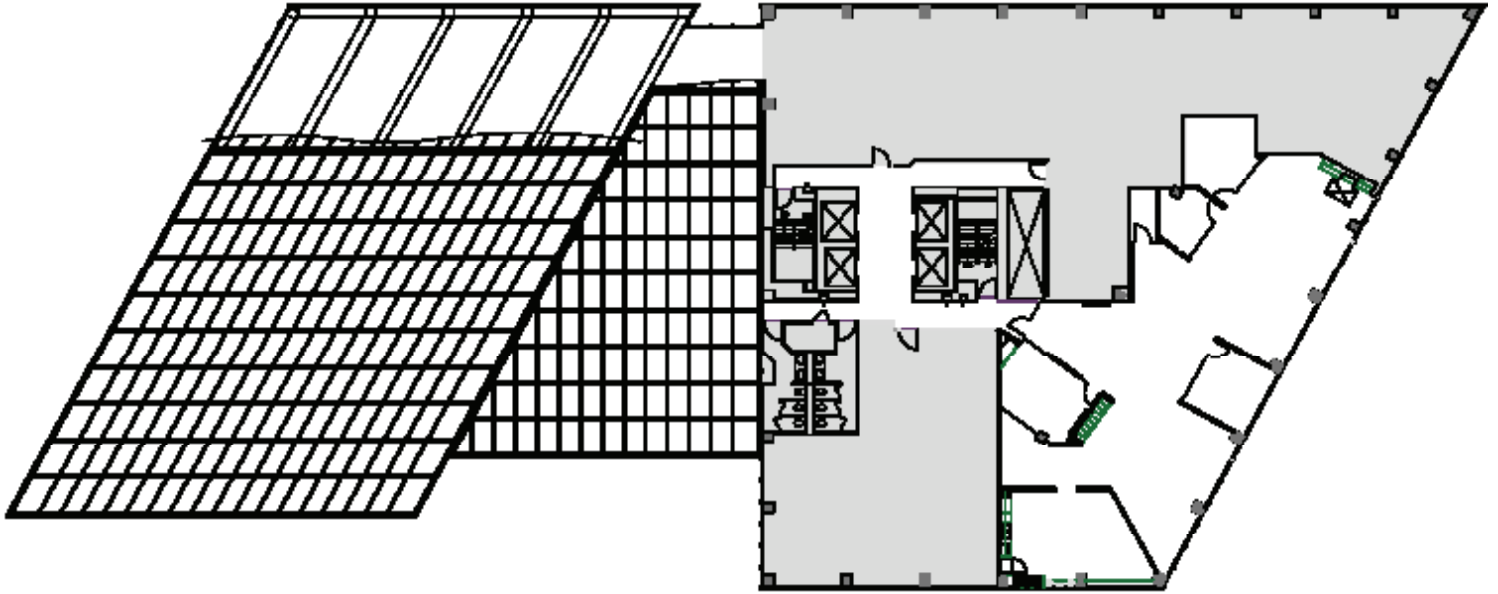
## FOURTH & BLANCHARD

2101 Fourth Avenue  
Seattle, WA 98121

19TH FLOOR

Rentable square feet: 4,080

Available  Leased



N >