

Schedule a Tour
206-467-7600



MARTIN SELIG
REAL ESTATE

FOR LEASE



Martin Selig
mselig@martinselig.com



Jordan Selig
jselig@martinselig.com



Theresa Howard
thoward@martinselig.com



Mike Brixner
mbrixner@martinselig.com



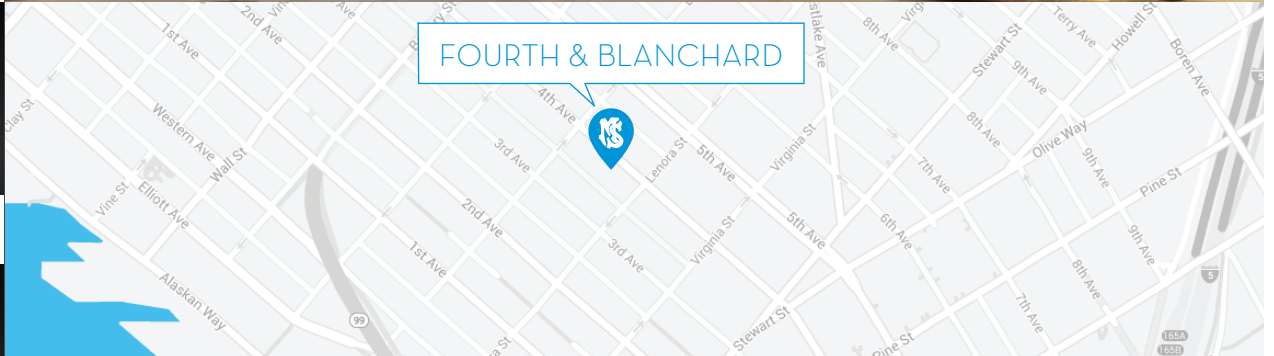
Ilich Vahimi
ivahimi@martinselig.com



Michael Brixner
mcbrixner@martinselig.com



David Selig
dselig@martinselig.com



Building Features:

- Custom build-outs available
- Indoor parking
- Highest-security high-rise in Seattle
- Starbucks and deli in lobby
- Landmark structure featuring iconic architecture
- Pet-friendly
- Bike storage
- On-site showers & locker rooms
- Local lunch delivery from Peach

Neighborhood Features:

- Excellent highway access
- Easy access to Pike Place Market
- Surrounded by retail, banks and restaurants
- Two blocks to retail core and transit tunnel

FOURTH & BLANCHARD

2101 Fourth Avenue
Seattle, WA 98121

Available Square Footage: 62,234

CALL US TO SCHEDULE A TOUR | 206-467-7600 | martinselig.com

Schedule a Tour
206-467-7600

FOR LEASE

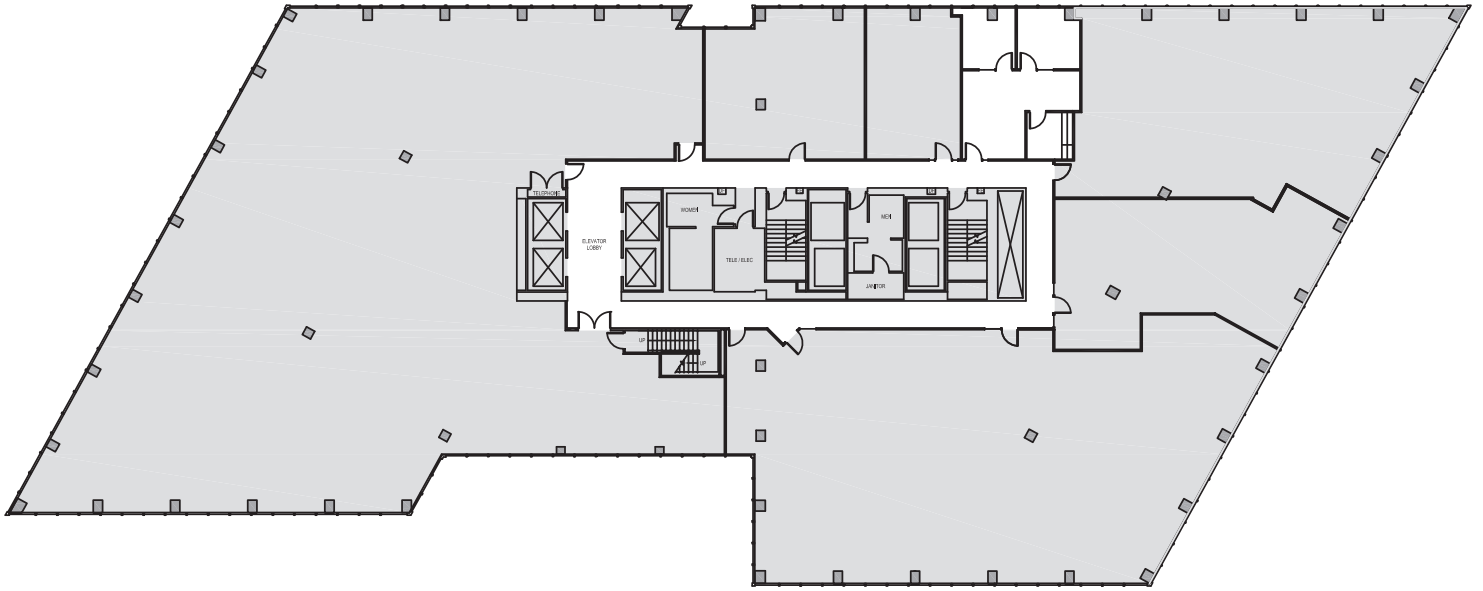
FOURTH & BLANCHARD

2101 Fourth Avenue
Seattle, WA 98121

3rd FLOOR

Rentable square feet: 716

Available Leased



N >

Schedule a Tour
206-467-7600

FOR LEASE

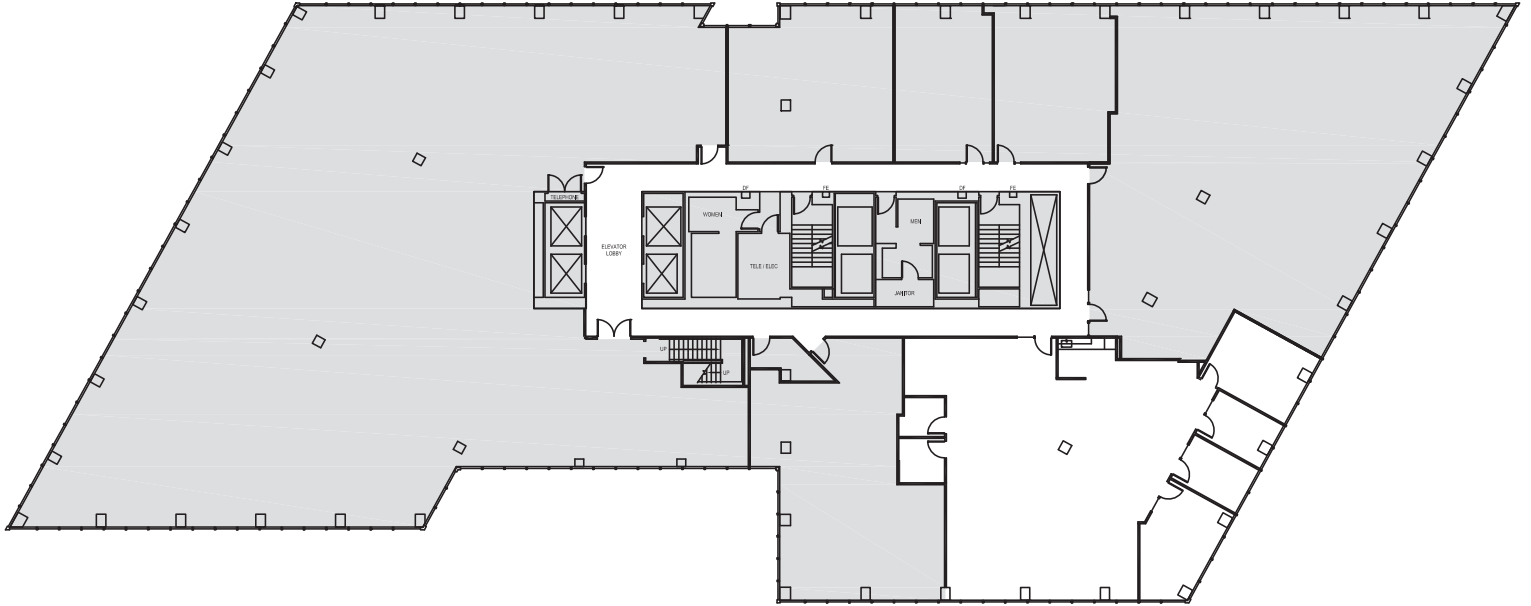
FOURTH & BLANCHARD

2101 Fourth Avenue
Seattle, WA 98121

3rd FLOOR

Rentable square feet: 3,278

Available Leased



N >

Schedule a Tour
206-467-7600

FOR LEASE

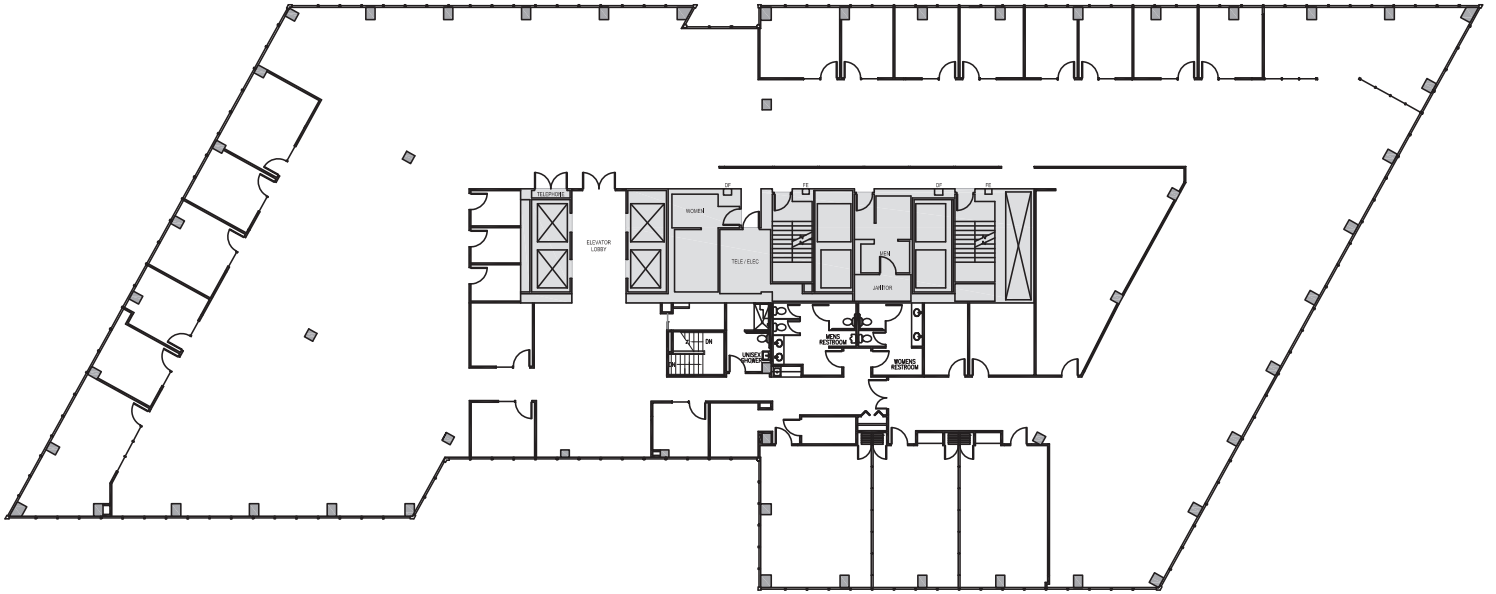
FOURTH & BLANCHARD

2101 Fourth Avenue
Seattle, WA 98121

4TH FLOOR

Rentable square feet: 20,882

Available Leased



N >

Schedule a Tour
206-467-7600

FOR LEASE

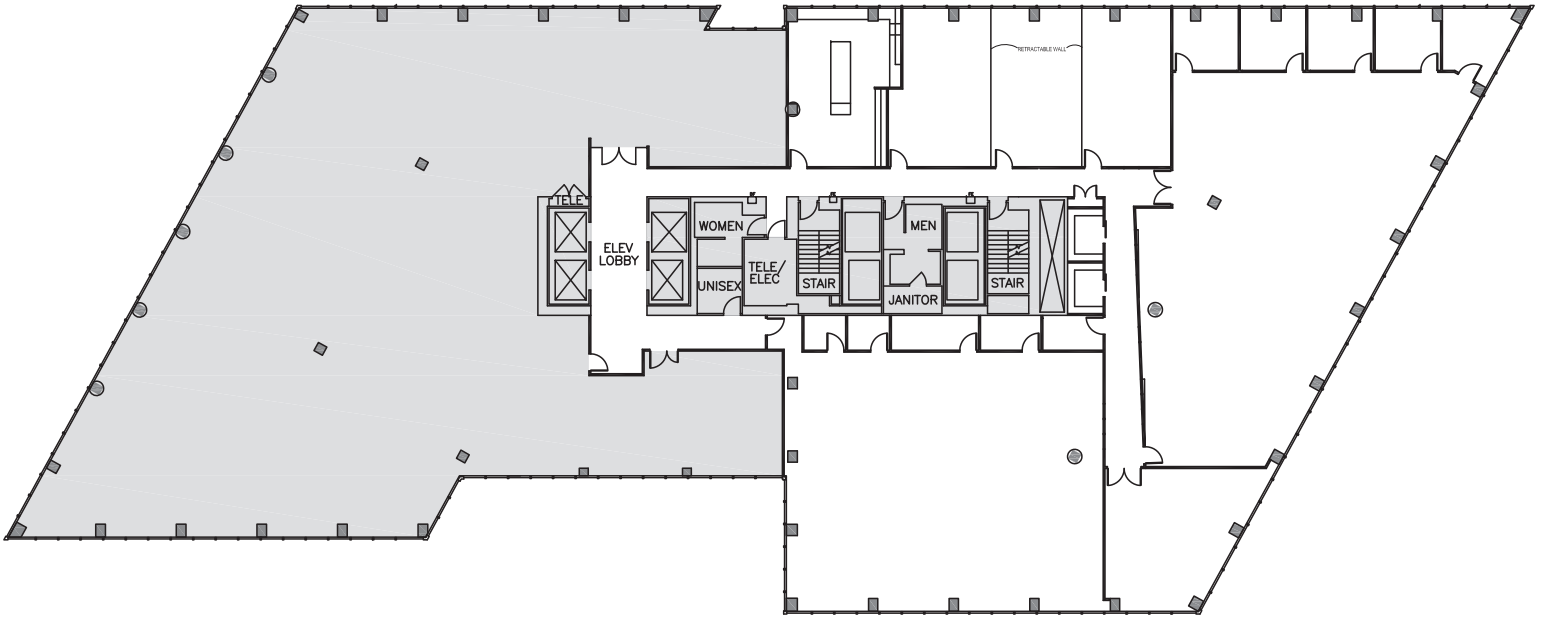
FOURTH & BLANCHARD

2101 Fourth Avenue
Seattle, WA 98121

5TH FLOOR

Rentable square feet: 11,165

Available Leased



N >

Schedule a Tour
206-467-7600

FOR LEASE

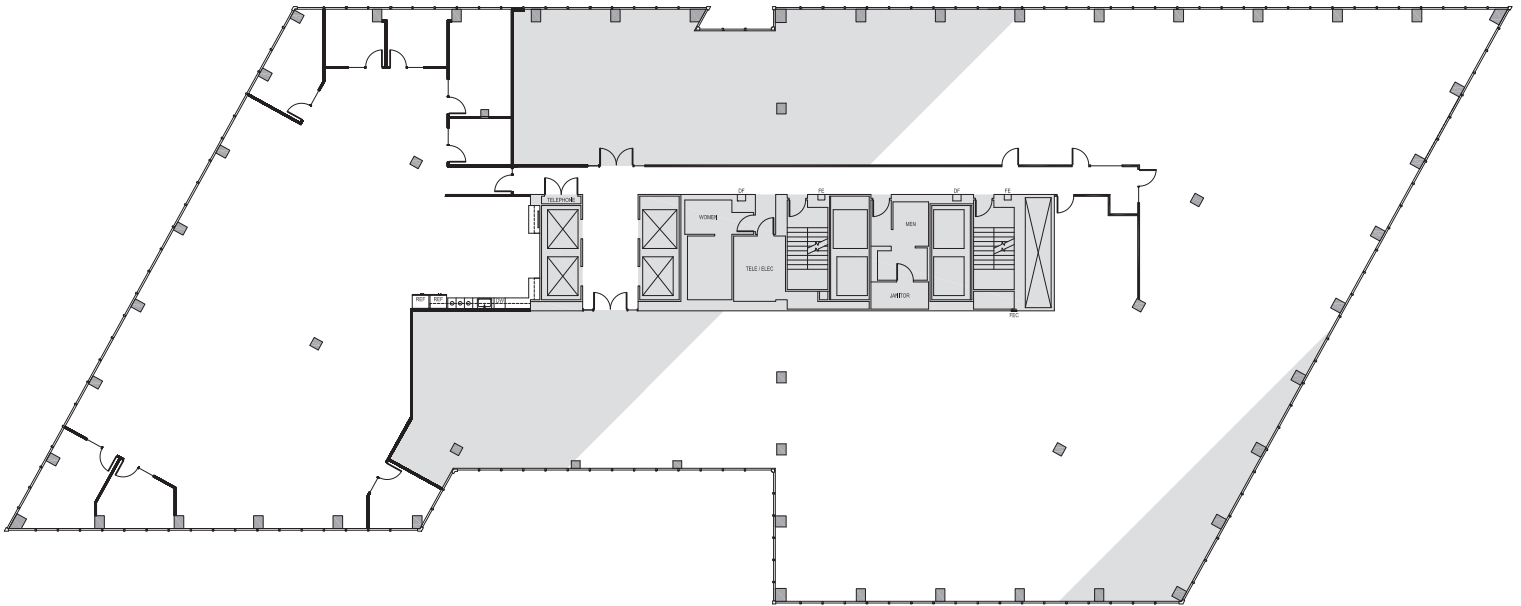
FOURTH & BLANCHARD

2101 Fourth Avenue
Seattle, WA 98121

7TH FLOOR

Rentable square feet: 6,279

Available Leased



N >

Schedule a Tour
206-467-7600

FOR LEASE

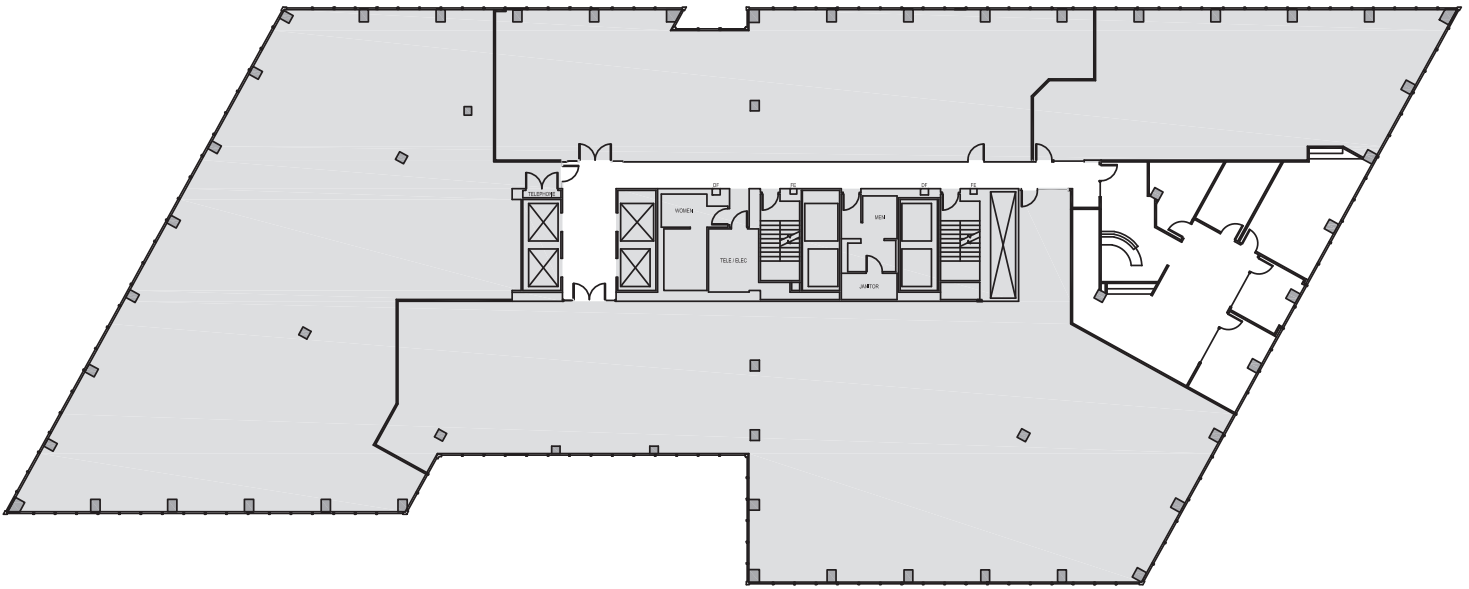
FOURTH & BLANCHARD

2101 Fourth Avenue
Seattle, WA 98121

7TH FLOOR

Rentable square feet: 2,082

Available Leased



N >

Schedule a Tour
206-467-7600

FOR LEASE

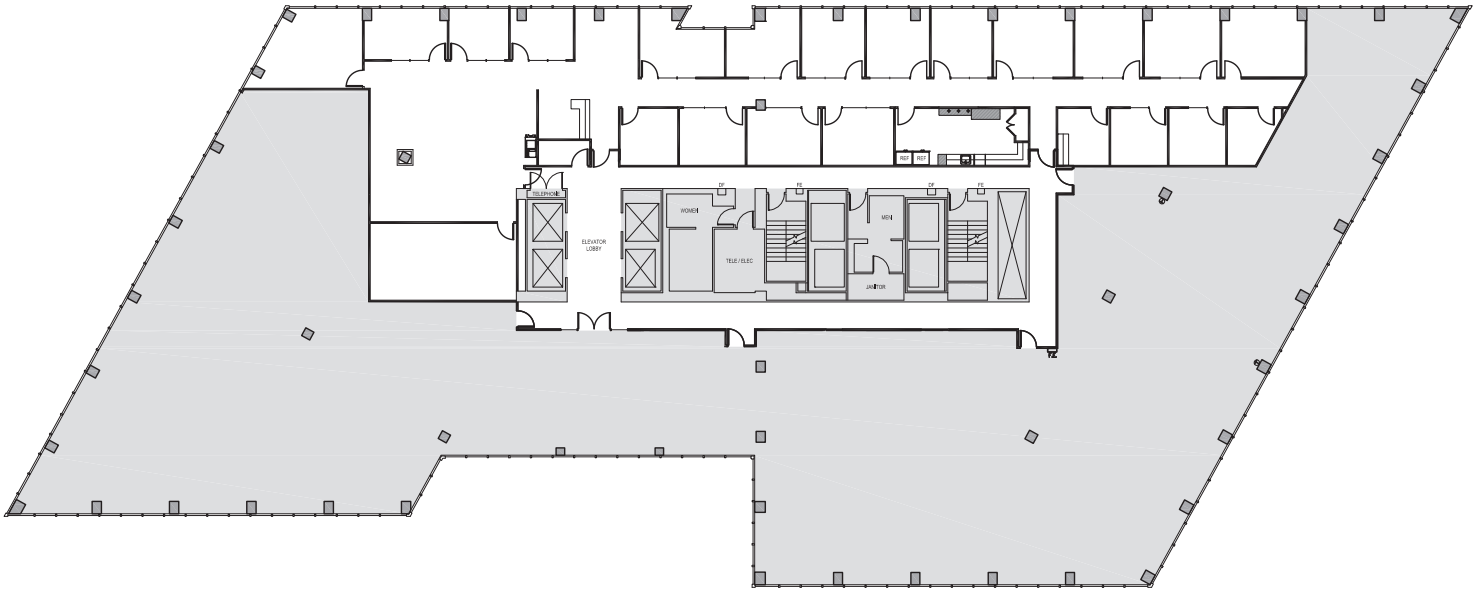
FOURTH & BLANCHARD

2101 Fourth Avenue
Seattle, WA 98121

8TH FLOOR

Rentable square feet: 6,707

Available Leased



Schedule a Tour
206-467-7600

FOR LEASE

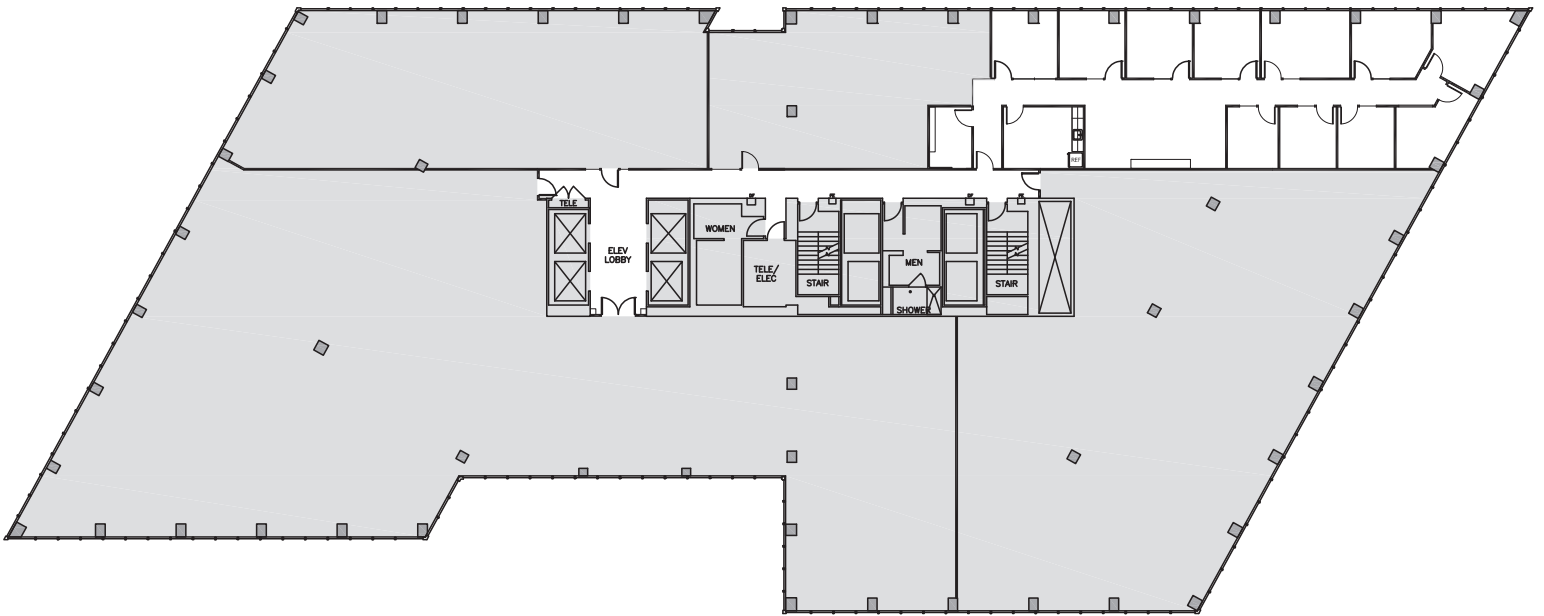
FOURTH & BLANCHARD

2101 Fourth Avenue
Seattle, WA 98121

9TH FLOOR

Rentable square feet: 2,881

Available Leased



N >

Schedule a Tour
206-467-7600

FOR LEASE

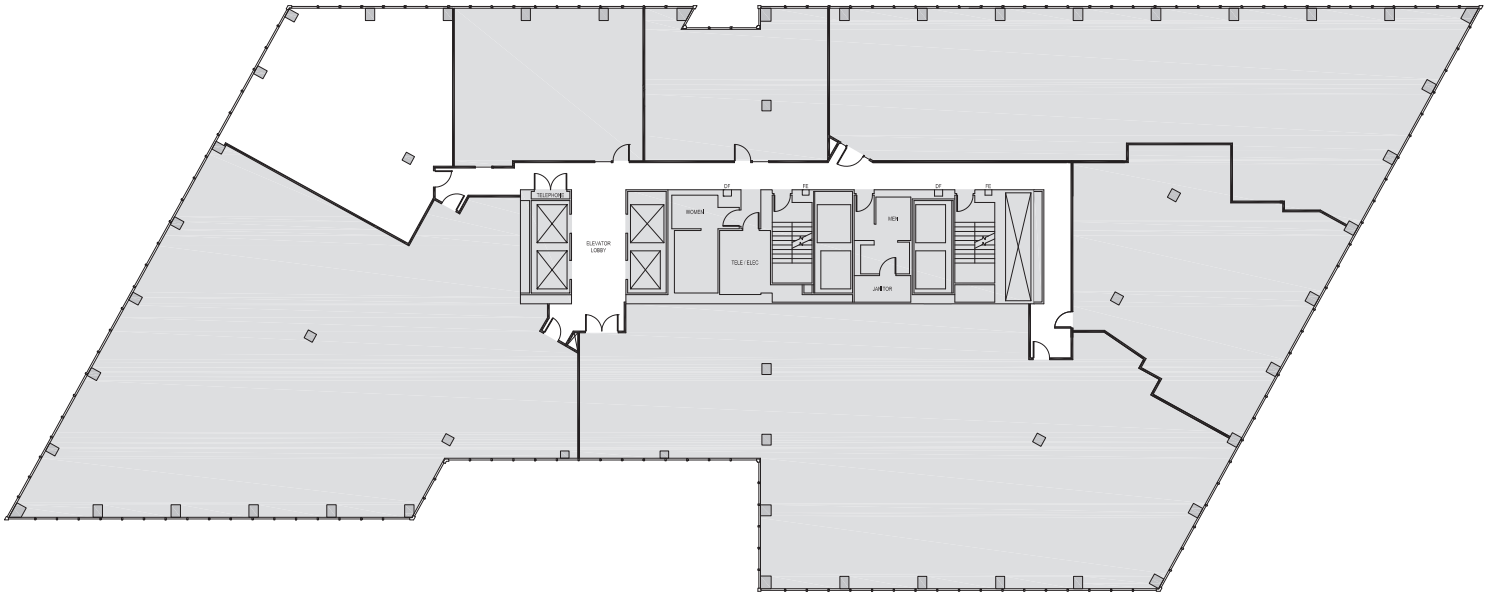
FOURTH & BLANCHARD

2101 Fourth Avenue
Seattle, WA 98121

10TH FLOOR

Rentable square feet: 1,524

Available Leased



N >

Schedule a Tour
206-467-7600

FOR LEASE

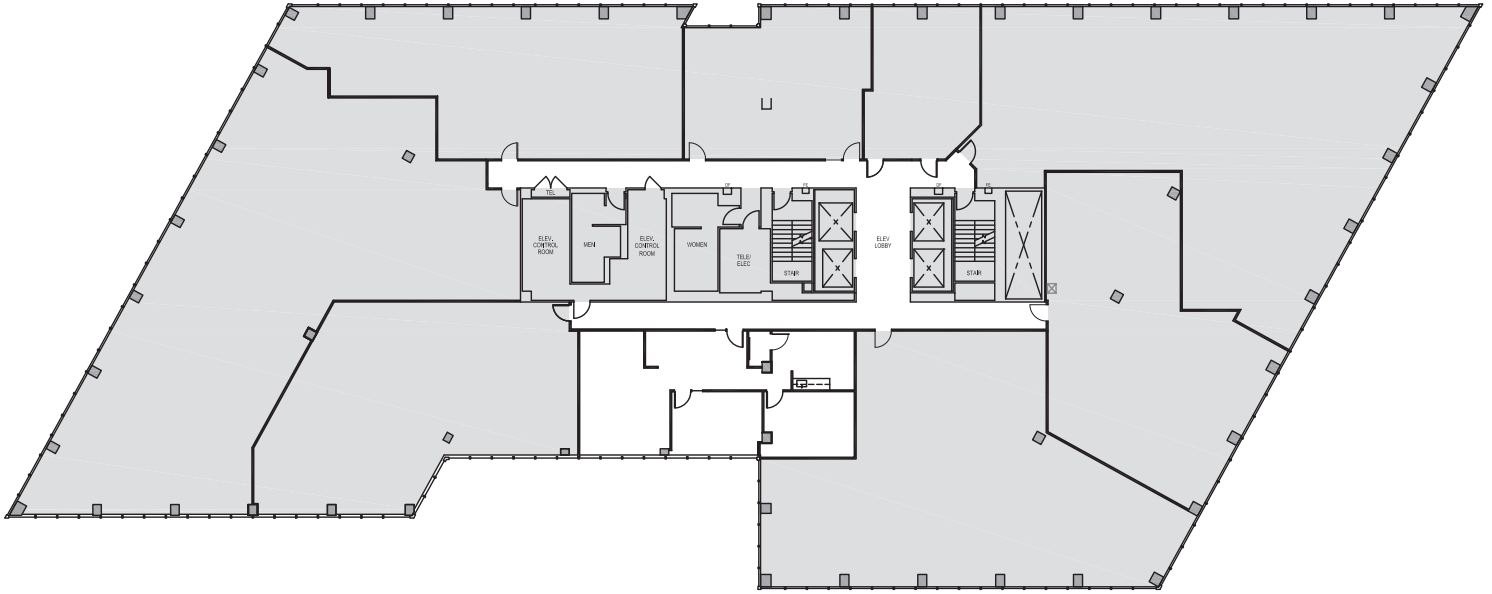
FOURTH & BLANCHARD

2101 Fourth Avenue
Seattle, WA 98121

13TH FLOOR

Rentable square feet: 1,433

Available Leased



N >

Schedule a Tour
206-467-7600

FOR LEASE

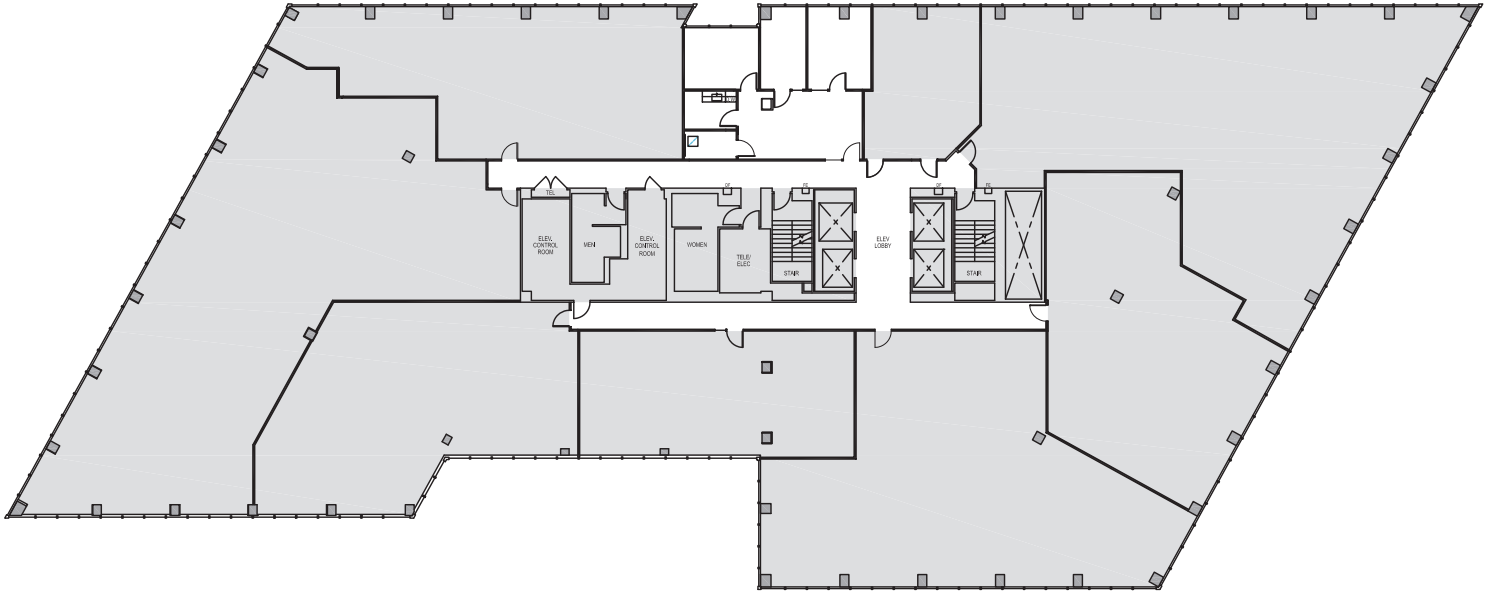
FOURTH & BLANCHARD

2101 Fourth Avenue
Seattle, WA 98121

13TH FLOOR

Rentable square feet: 1,015

Available Leased



N >

Schedule a Tour
206-467-7600

FOR LEASE

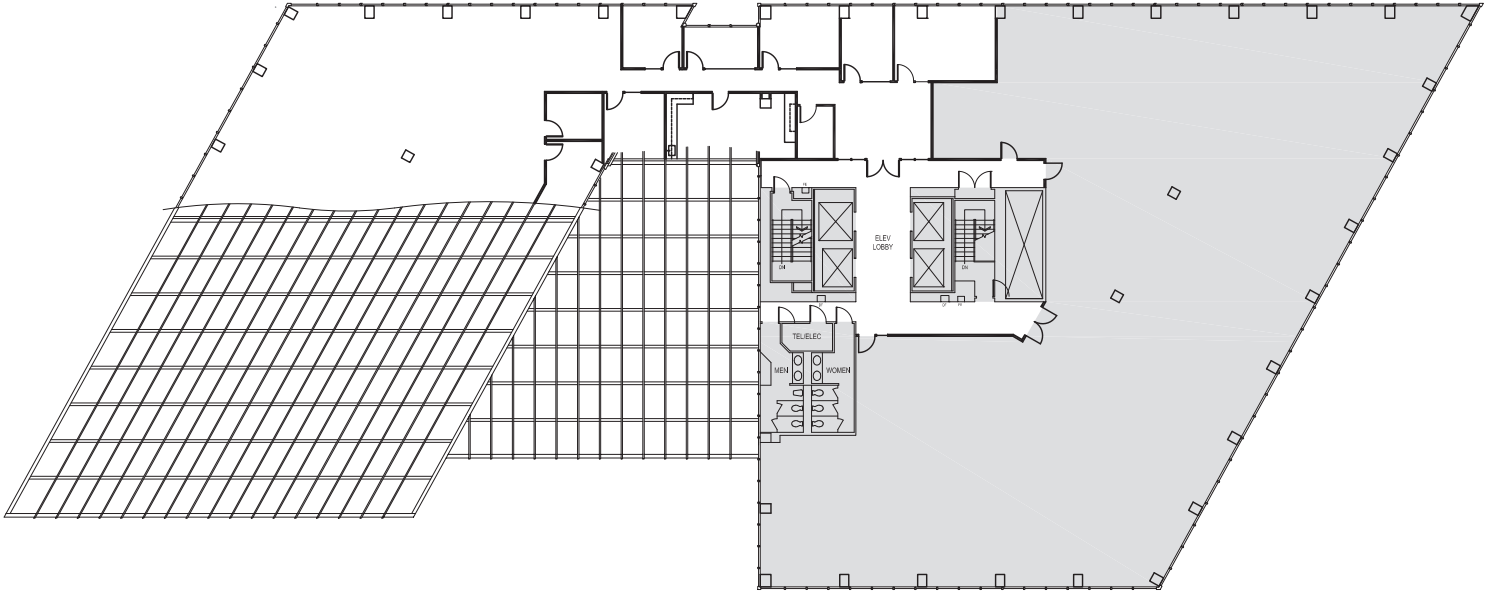
FOURTH & BLANCHARD

2101 Fourth Avenue
Seattle, WA 98121

18TH FLOOR

Rentable square feet: 5,145

Available Leased



N >