

Schedule a Tour  
206-467-7600



MARTIN SELIG  
REAL ESTATE

# FOR LEASE



Martin Selig  
mselig@martinselg.com



Jordan Selig  
jselig@martinselg.com



Theresa Howard  
thoward@martinselg.com



Mike Brixner  
mbrixner@martinselg.com



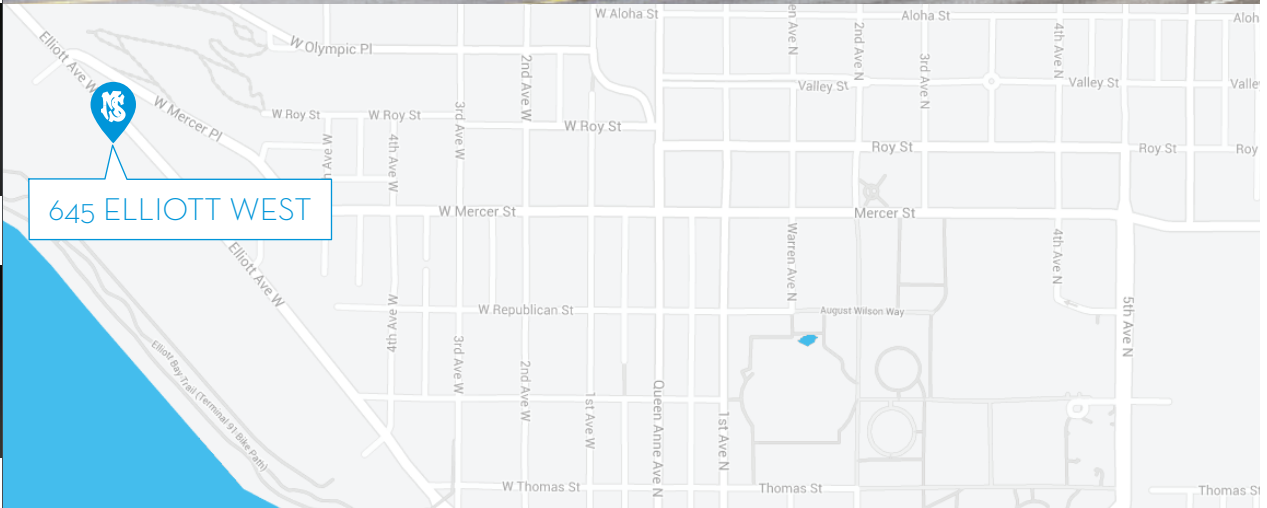
Ilich Vahimi  
ivahimi@martinselg.com



Michael Brixner  
mcbrixner@martinselg.com



David Selig  
dselig@martinselg.com



### Building Features:

- Efficient floor plates
- Custom build-outs available
- Plentiful below-grade parking
- New LEED Gold construction
- High floor-to-ceiling dimensions
- Large windows for maximum daylight
- Overlooking Elliott Bay
- Pet-friendly offices
- Free lobby Wi-Fi
- Bike storage
- On-site showers & locker rooms

### Neighborhood Features:

- Close-by shops and restaurants
- Beautiful Puget Sound views
- Miles of waterfront trails
- Free of downtown congestion

## 645 ELLIOTT WEST

645 Elliott Ave W  
Seattle, WA 98119

Available Square Footage: 50,934

CALL US TO SCHEDULE A TOUR | 206-467-7600 | martinselg.com

Schedule a Tour  
206-467-7600

# FOR LEASE

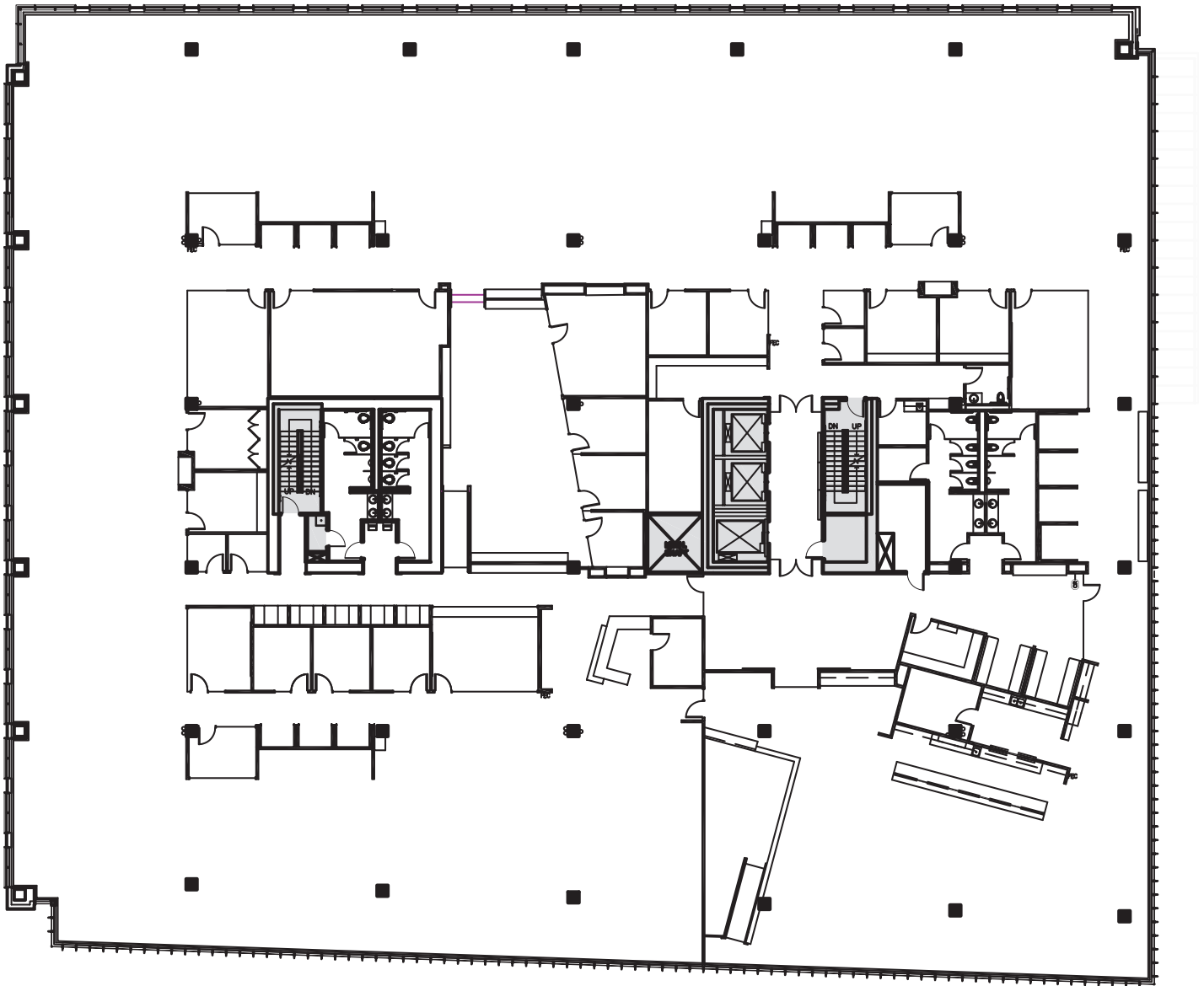
## 645 ELLIOTT WEST

645 Elliott Avenue W.  
Seattle, WA 98119

### 2ND FLOOR

Rentable square feet: 39,291

Available  Leased



Schedule a Tour  
206-467-7600

# FOR LEASE

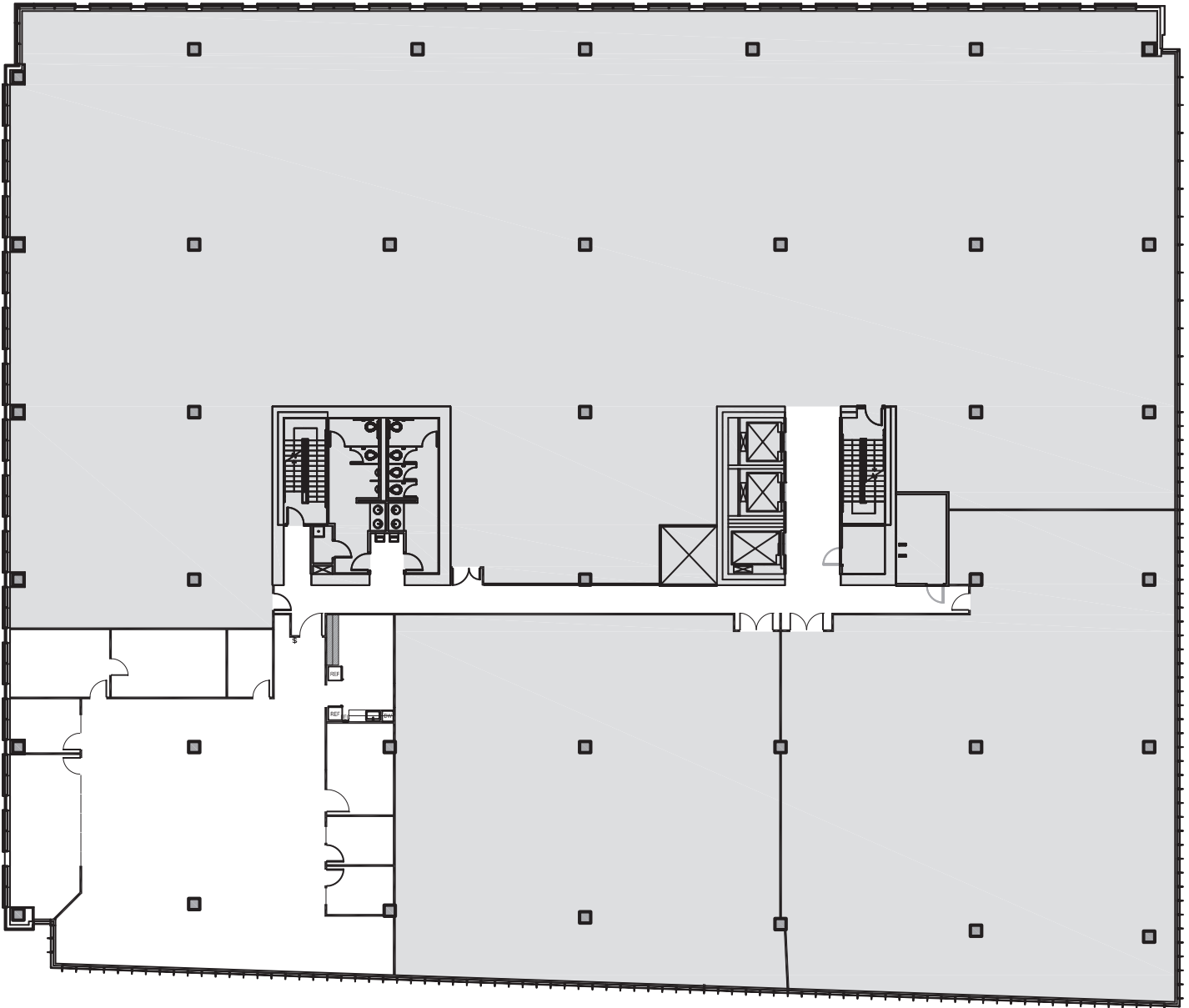
## 645 ELLIOTT WEST

645 Elliott Avenue W.  
Seattle, WA 98119

### 3RD FLOOR

Rentable square feet: 4,967

Available  Leased



< N

Schedule a Tour  
206-467-7600

# FOR LEASE

## 645 ELLIOTT WEST

645 Elliott Avenue W.  
Seattle, WA 98119

### 3RD FLOOR

Rentable square feet: 6,676

Available  Leased

