

Schedule a Tour  
206-467-7600



MARTIN SELIG  
REAL ESTATE

# FOR LEASE



Martin Selig  
mselig@martinsel.com



Jordan Selig  
jselig@martinsel.com



Theresa Howard  
thoward@martinsel.com



Mike Brixner  
mbrixner@martinsel.com



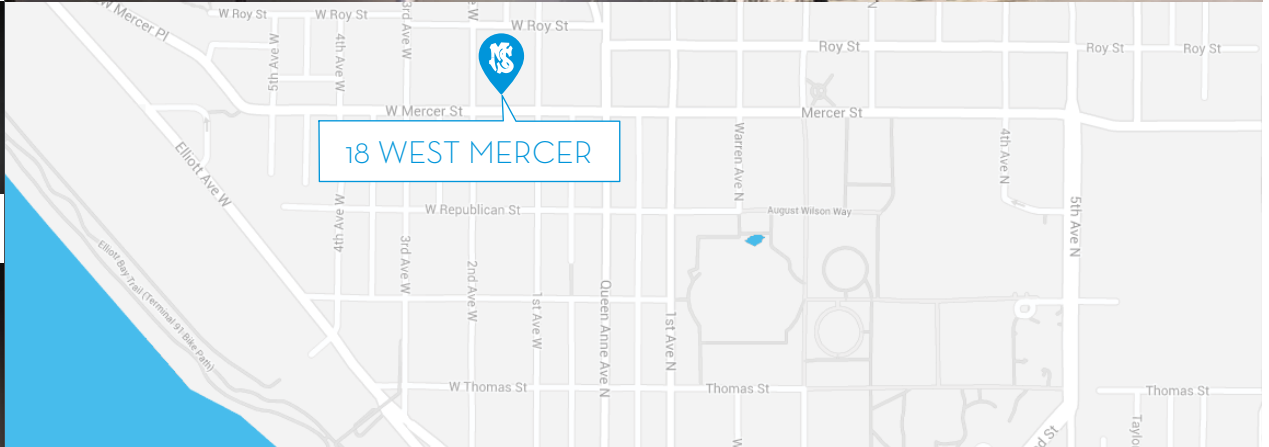
Ilich Vahimi  
ivahimi@martinsel.com



Michael Brixner  
mcbrixner@martinsel.com



David Selig  
dselig@martinsel.com



### Building Features:

- Custom build-outs available
- Indoor parking
- Pet-friendly offices
- Bike storage
- On-site showers

### Neighborhood Features:

- Direct access to I-5
- Walking distance to transit
- Seattle Center in your backyard
- Close to 24-hour Safeway
- All Lower Queen Anne services
- Tree-lined historical neighborhood

Available Square Footage: 12,336

## 18 WEST MERCER

18 West Mercer Street  
Seattle, WA 98119

CALL US TO SCHEDULE A TOUR | 206-467-7600 | martinsel.com

Schedule a Tour  
206-467-7600

# FOR LEASE

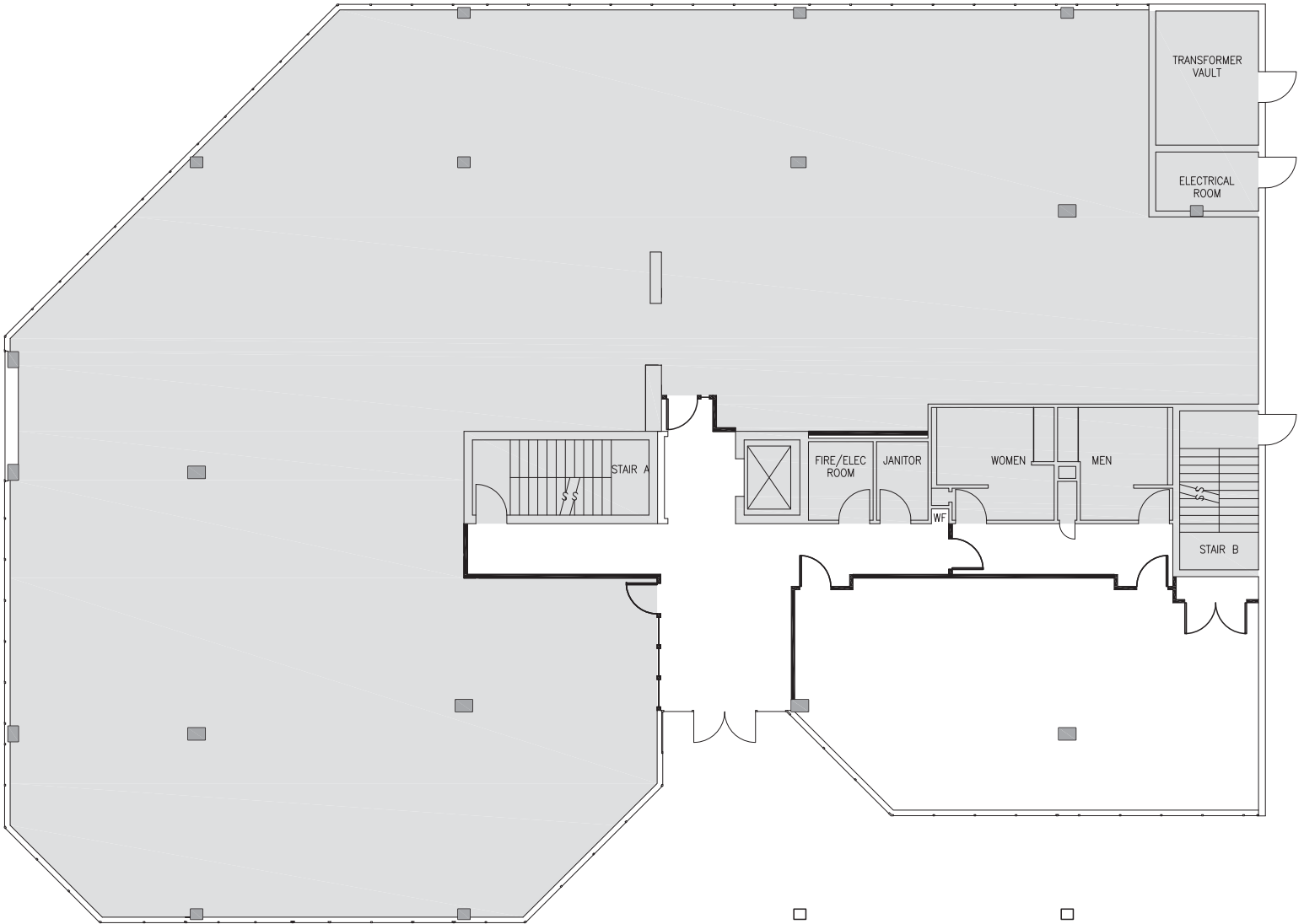
## 18 WEST MERCER

18 West Mercer Street  
Seattle, WA 98119

### FIRST FLOOR

Rentable square feet: 1,081

Available  Leased



<N

Schedule a Tour  
206-467-7600

# FOR LEASE

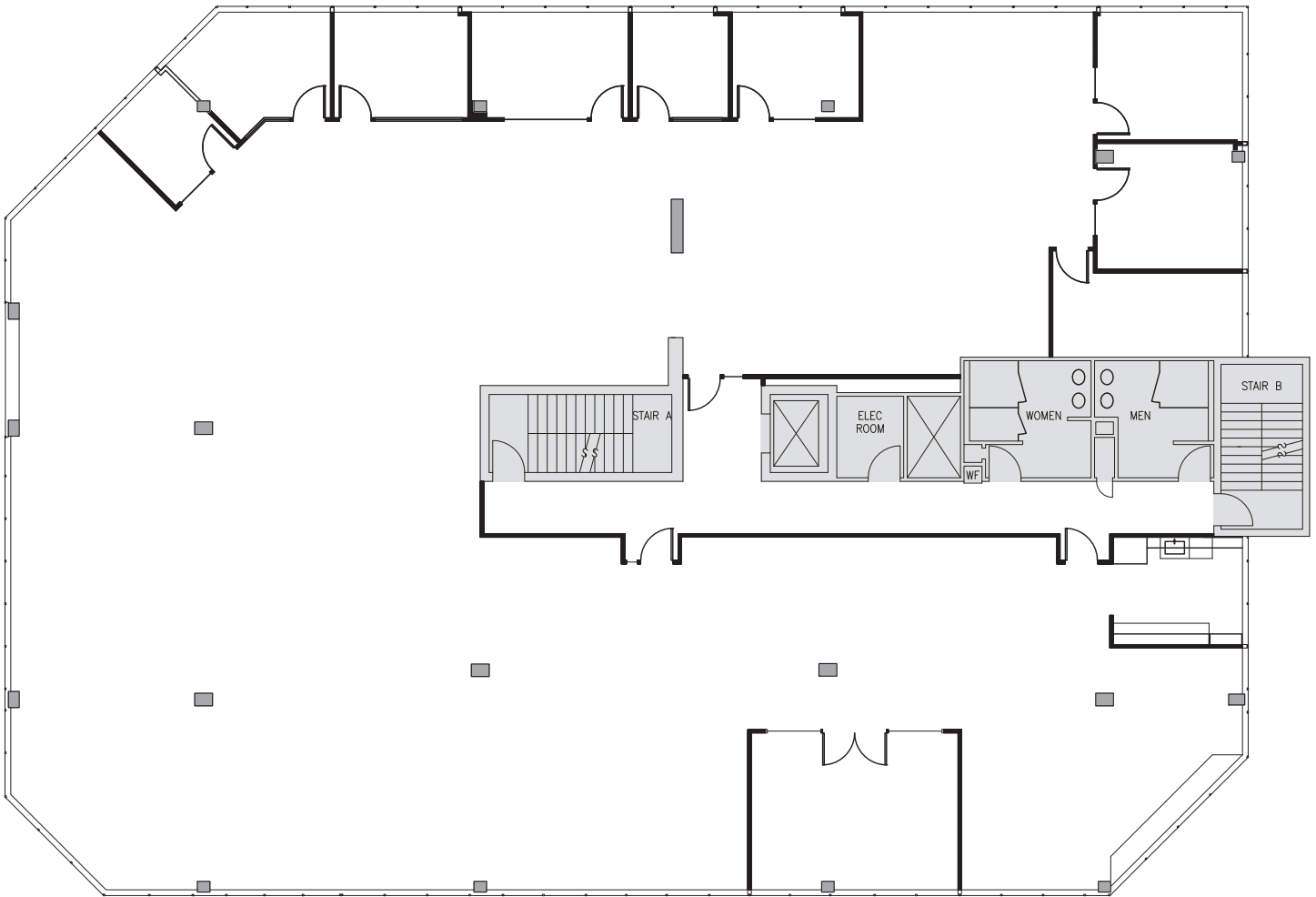
## 18 WEST MERCER

18 West Mercer Street  
Seattle, WA 98119

### SECOND FLOOR

Rentable square feet: 9,338

Available  Leased



<N

Schedule a Tour  
206-467-7600

# FOR LEASE

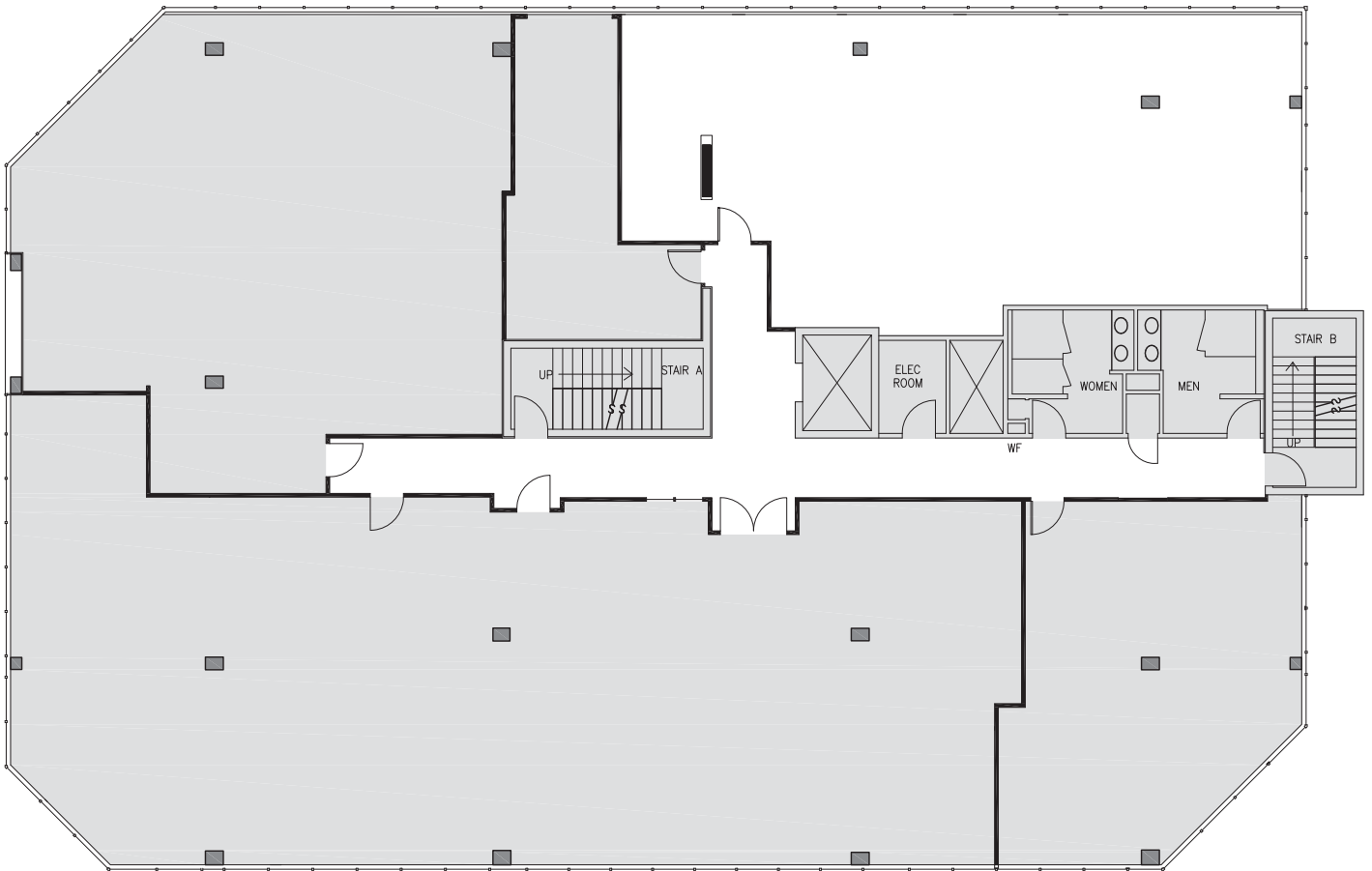
## 18 WEST MERCER

18 West Mercer Street  
Seattle, WA 98119

### THIRD FLOOR

Rentable square feet: 1,917

Available  Leased



<N