

Schedule a Tour
206-467-7600



MARTIN SELIG
REAL ESTATE

FOR LEASE



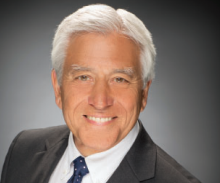
Martin Selig
mselig@martinsel.com



Jordan Selig
jselig@martinsel.com



Theresa Howard
thoward@martinsel.com



Mike Brixner
mbrixner@martinsel.com



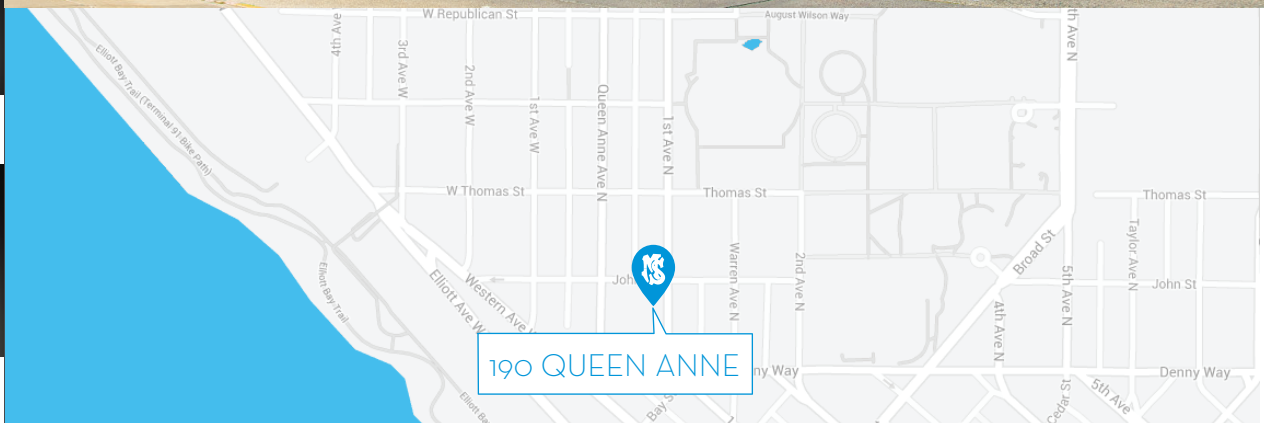
Ilich Vahimi
ivahimi@martinsel.com



Michael Brixner
mcbrixner@martinsel.com



David Selig
dselig@martinsel.com



Building Features:

- Large floor plates
- Custom build-outs available
- On-site parking
- Pet-friendly offices
- Bike storage

Neighborhood Features:

- Nearby public transit
- Short walk to Seattle Center and KeyArena
- Close to Kerry Park and one of the best views in Seattle
- Abundant nearby amenities
- 24-hour Safeway nearby
- Miles of waterfront trails

Available Square Footage: 9,068

190 QUEEN ANNE

190 Queen Anne Avenue N
Seattle, WA 98109

CALL US TO SCHEDULE A TOUR | 206-467-7600 | martinsel.com

Schedule a Tour
206-467-7600

FOR LEASE

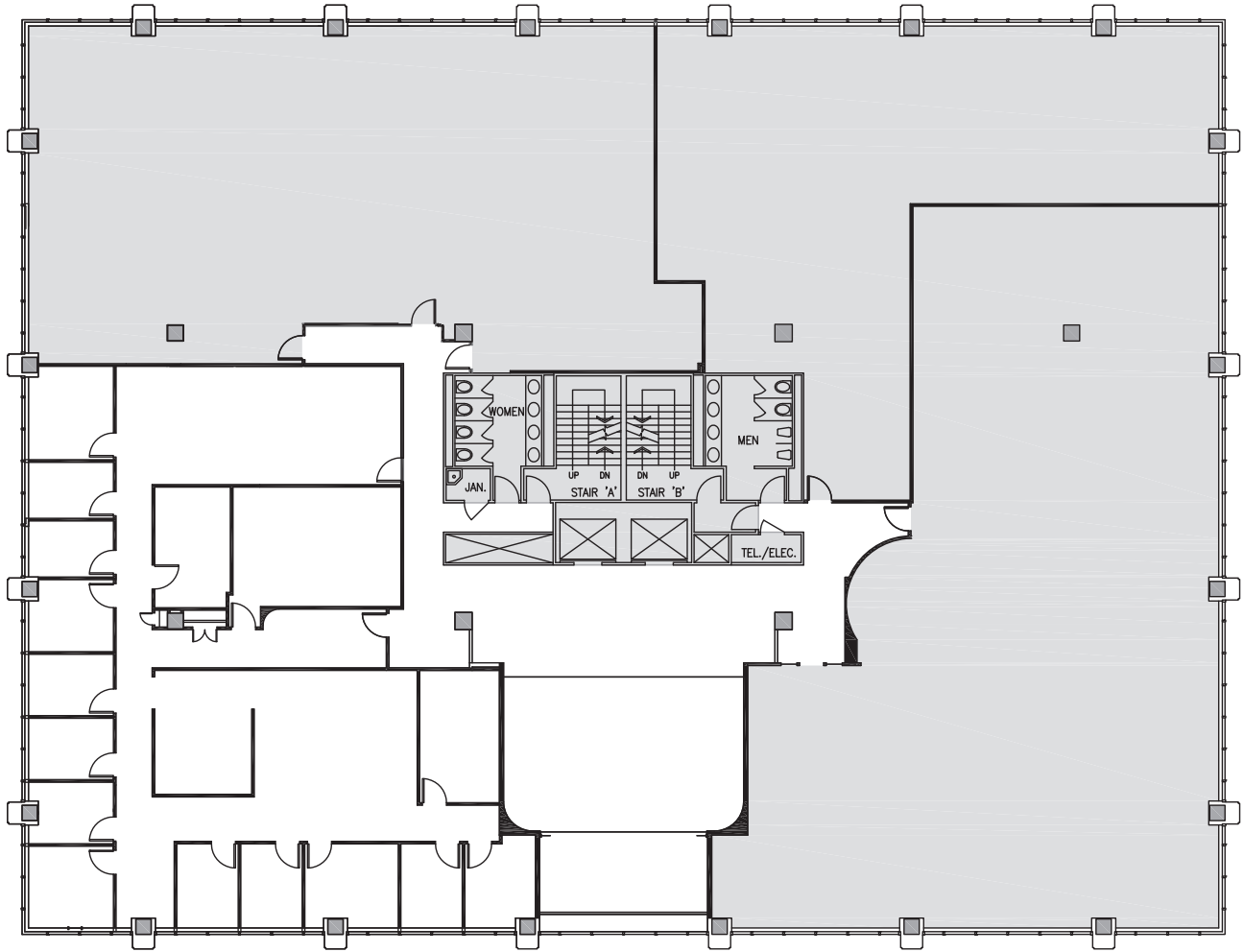
190 QUEEN ANNE

190 Queen Anne Avenue N.
Seattle, WA 98109

SECOND FLOOR

Rentable square feet: 4,430

Available Leased



< N

Schedule a Tour
206-467-7600

FOR LEASE

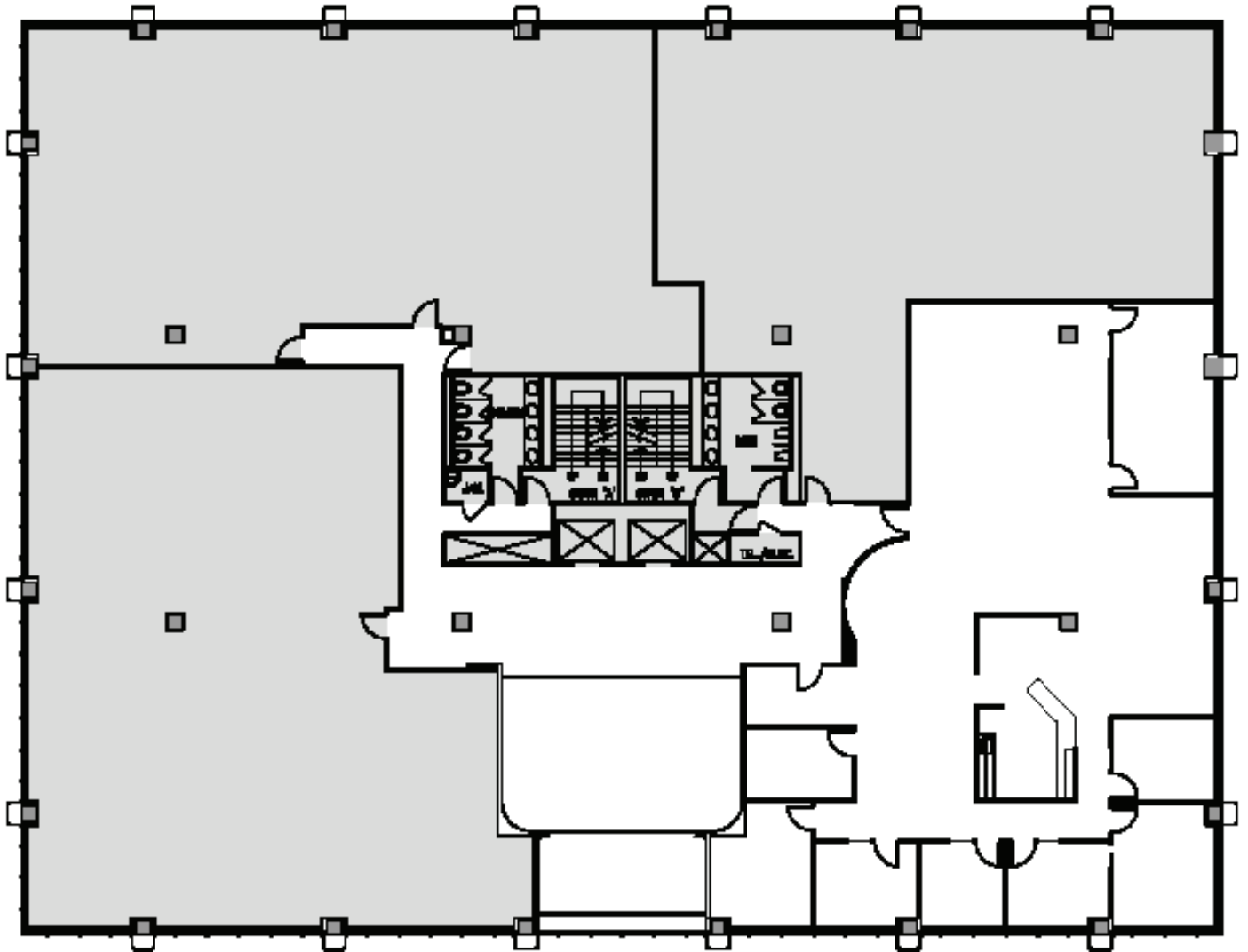
190 QUEEN ANNE

190 Queen Anne Avenue N.
Seattle, WA 98109

SECOND FLOOR

Rentable square feet: 4,638

Available Leased



< N

Schedule a Tour
206-467-7600

FOR LEASE

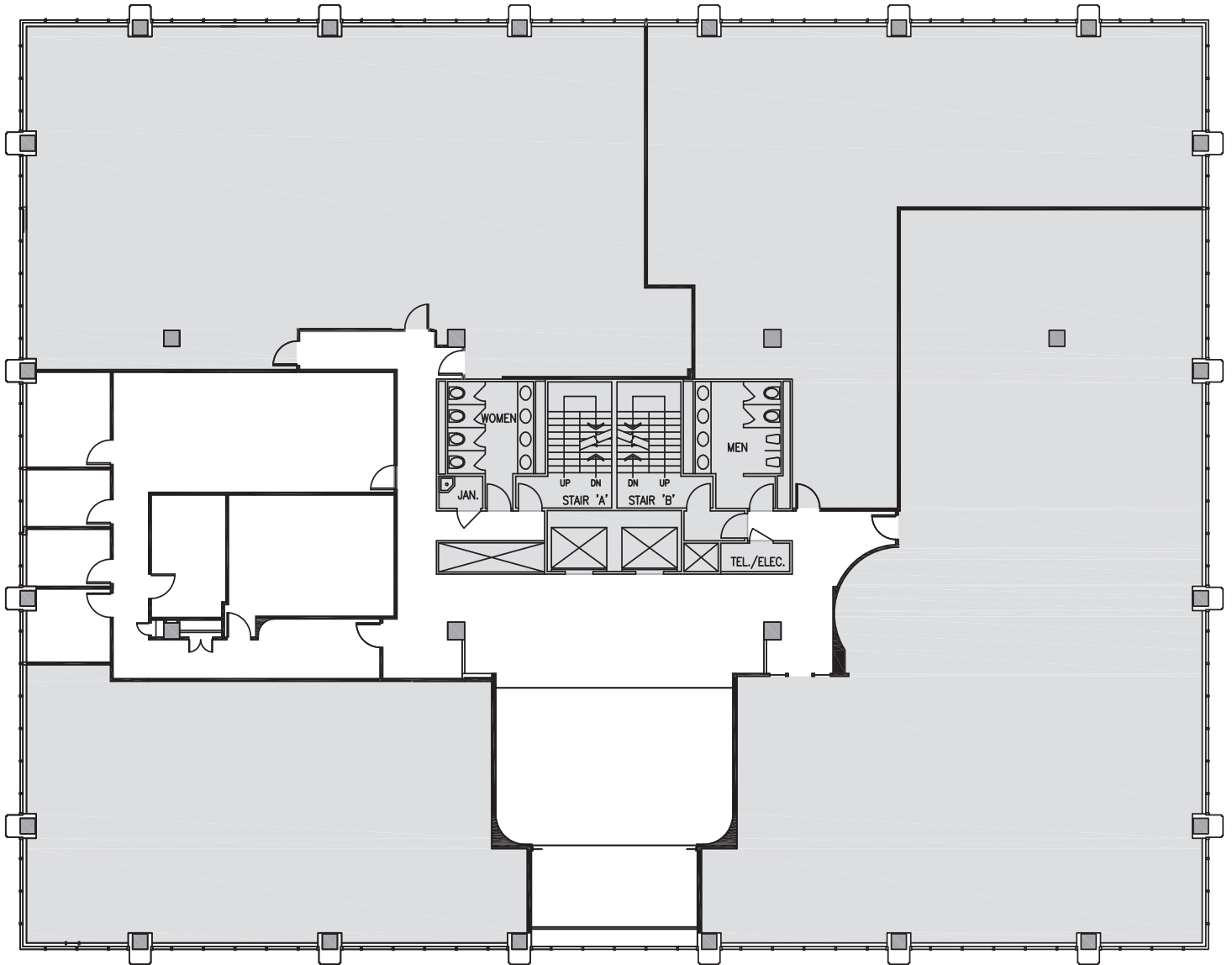
190 QUEEN ANNE

190 Queen Anne Avenue N.
Seattle, WA 98109

SECOND FLOOR

Rentable square feet: 2,056

Available Leased



Schedule a Tour
206-467-7600

FOR LEASE

190 QUEEN ANNE

190 Queen Anne Avenue N.
Seattle, WA 98109

SECOND FLOOR

Rentable square feet: 2,374

Available Leased

