

Call Us for  
Information  
206-467-7600



**MARTIN SELIG**  
REAL ESTATE

# FOR LEASE



## THIRD & HARRISON

450 3rd Ave W  
Seattle, WA 98119

**Available Square Footage: 10,121**

### Building Features:

- Brand new construction
- Class A office buildings
- Custom build-outs available
- Underground parking
- Pet-friendly offices
- Free lobby Wi-Fi

### Neighborhood Features:

- Plenty of nearby public transit
- Easy access to Seattle Center
- Downhill stroll to Belltown
- Abundant local shops and restaurants
- Close to 24-hour Safeway
- Kitty-corner to waterfront skybridge
- Free of downtown congestion



CALL US FOR INFORMATION | 206-467-7600 | [martinselig.com](http://martinselig.com)



Mike Brixner  
[mbrixner@martinselig.com](mailto:mbrixner@martinselig.com)



Theresa Howard  
[thoward@martinselig.com](mailto:thoward@martinselig.com)



Ilich Vahimi  
[ivahimi@martinselig.com](mailto:ivahimi@martinselig.com)



Michael Brixner  
[mcbrxner@martinselig.com](mailto:mcbrxner@martinselig.com)



Martin Selig  
[mselectig@martinselig.com](mailto:mselectig@martinselig.com)

Call Us for  
Information  
206-467-7600



MARTIN SELIG  
REAL ESTATE

# FOR LEASE

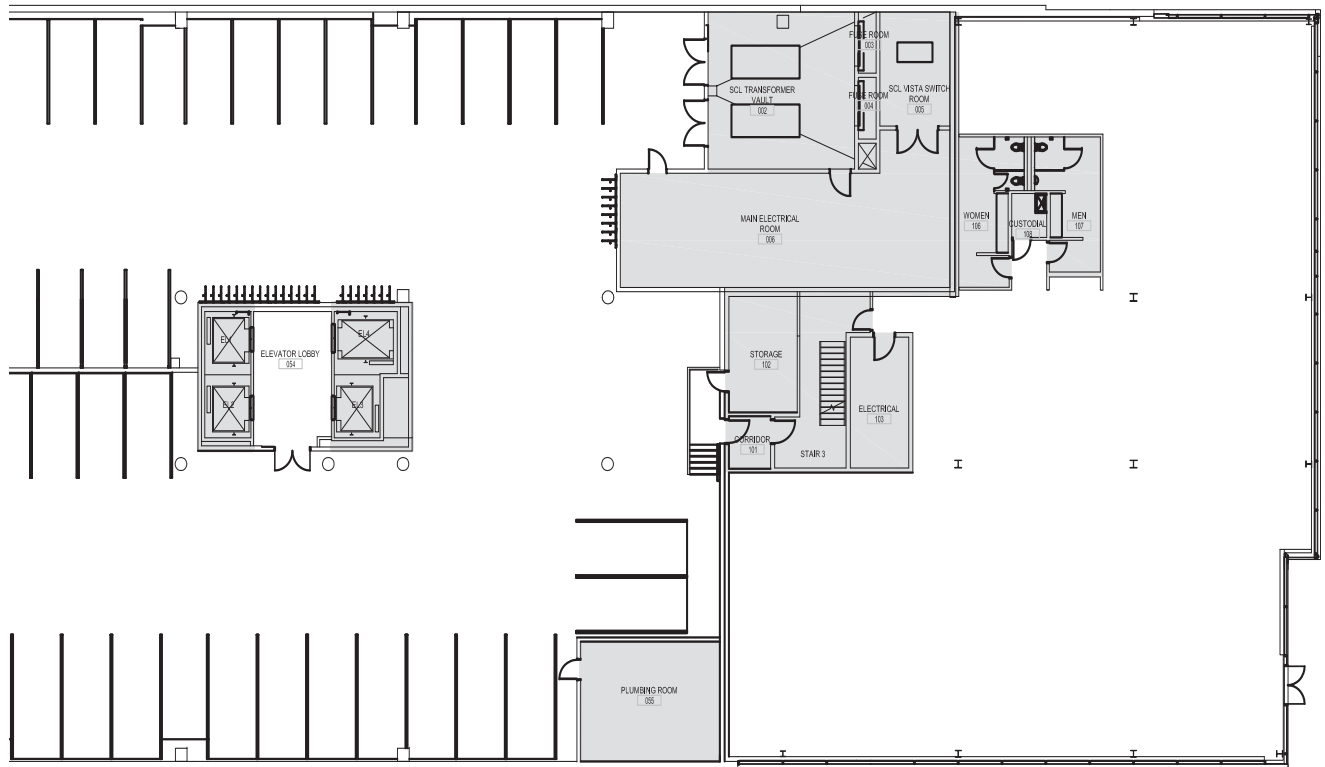
## THIRD & HARRISON

450 3rd Ave W  
Seattle, WA 98119

### FIRST FLOOR

Rentable square feet: 10,121

Available  Leased



<N

