

Schedule a Tour  
206-467-7600



MARTIN SELIG  
REAL ESTATE

# FOR LEASE



Martin Selig  
mselig@martinselig.com



Jordan Selig  
jselig@martinselig.com



Theresa Howard  
thoward@martinselig.com



Mike Brixner  
mbrixner@martinselig.com



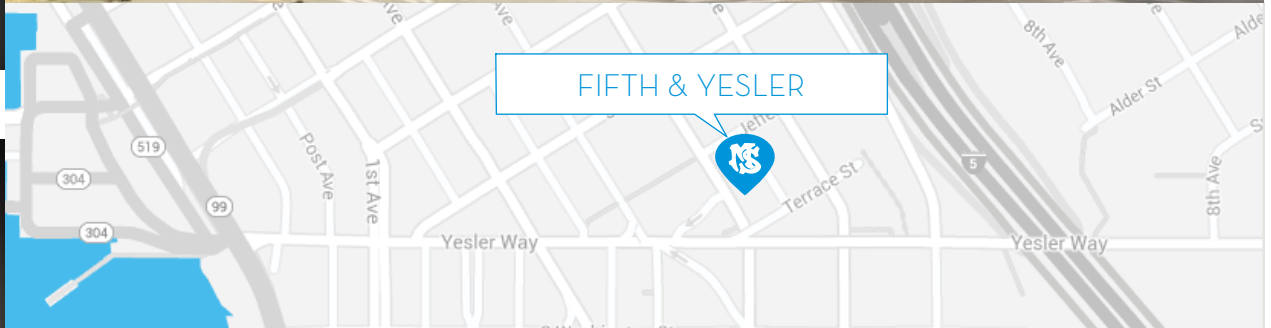
Ilich Vahimi  
ivahimi@martinselig.com



Michael Brixner  
mcbrixner@martinselig.com



David Selig  
dselig@martinselig.com



### Building Features:

- Custom build-outs available
- Indoor parking
- LEED Gold certified and Energy Star eligible
- Offers top-level security
- In-building deli and retail
- Pet-friendly
- Bike storage
- On-site showers

### Neighborhood Features:

- Excellent I-5 and I-90 highway access
- Transit tunnel close by
- Easy stroll to King County Courthouse
- Plenty of nearby shops and restaurants
- Walk to Mariners, Seahawks and Sounders games

**Available Square Footage: 1,653**

## FIFTH & YESLER

300 Fifth Avenue  
Seattle, WA 98104

CALL US TO SCHEDULE A TOUR | 206-467-7600 | martinselig.com

Schedule a Tour  
206-467-7600



MARTIN SELIG  
REAL ESTATE

# FOR LEASE

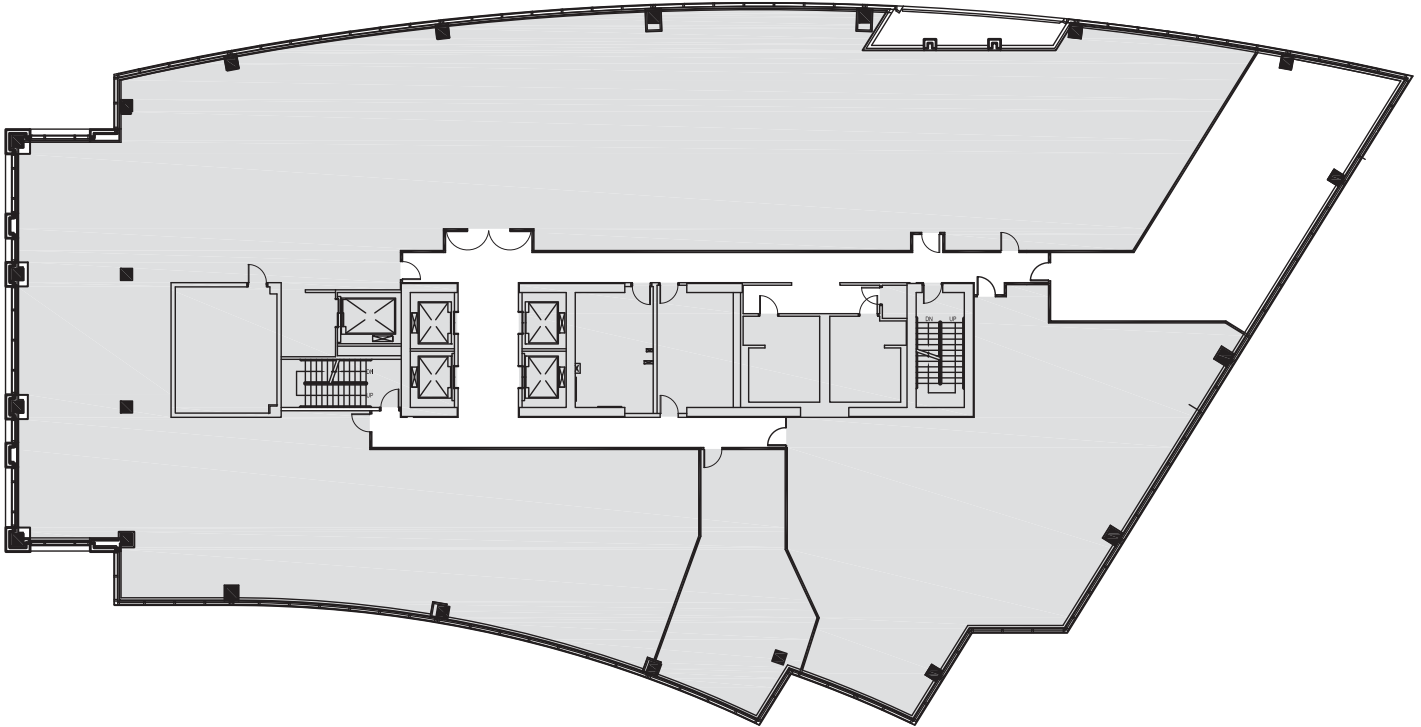
## FIFTH & YESLER

300 Fifth Avenue  
Seattle, WA 98104

13th FLOOR

Rentable square feet: 1,653

Available  Leased



<N