

Schedule a Tour
206-467-7600



MARTIN SELIG
REAL ESTATE

FOR LEASE



Martin Selig
mselig@martinselig.com



Jordan Selig
jselig@martinselig.com



Theresa Howard
thoward@martinselig.com



Mike Brixner
mbrixner@martinselig.com



Ilich Vahimi
ivahimi@martinselig.com



Michael Brixner
mcbrixner@martinselig.com



David Selig
dselig@martinselig.com



Building Features:

- Custom build-outs available
- Outdoor parking
- Pet-friendly offices
- Bike storage

Neighborhood Features:

- Only four blocks to Seattle Center
- Surrounded by local shopping district
- Countless cafés and restaurants
- One block to skybridge and waterfront parks
- Free of downtown congestion

Available Square Footage: 7,071

423 3rd Ave W

423 3rd AVE W
Seattle, WA 98119

CALL US TO SCHEDULE A TOUR | 206-467-7600 | martinselig.com

Schedule a Tour
206-467-7600

FOR LEASE

423 3rd Ave W

423 3rd Ave W

Seattle, WA 98119

1ST FLOOR

Rentable square feet: 5,409

Available Leased



Schedule a Tour
206-467-7600

FOR LEASE

423 3rd Ave W

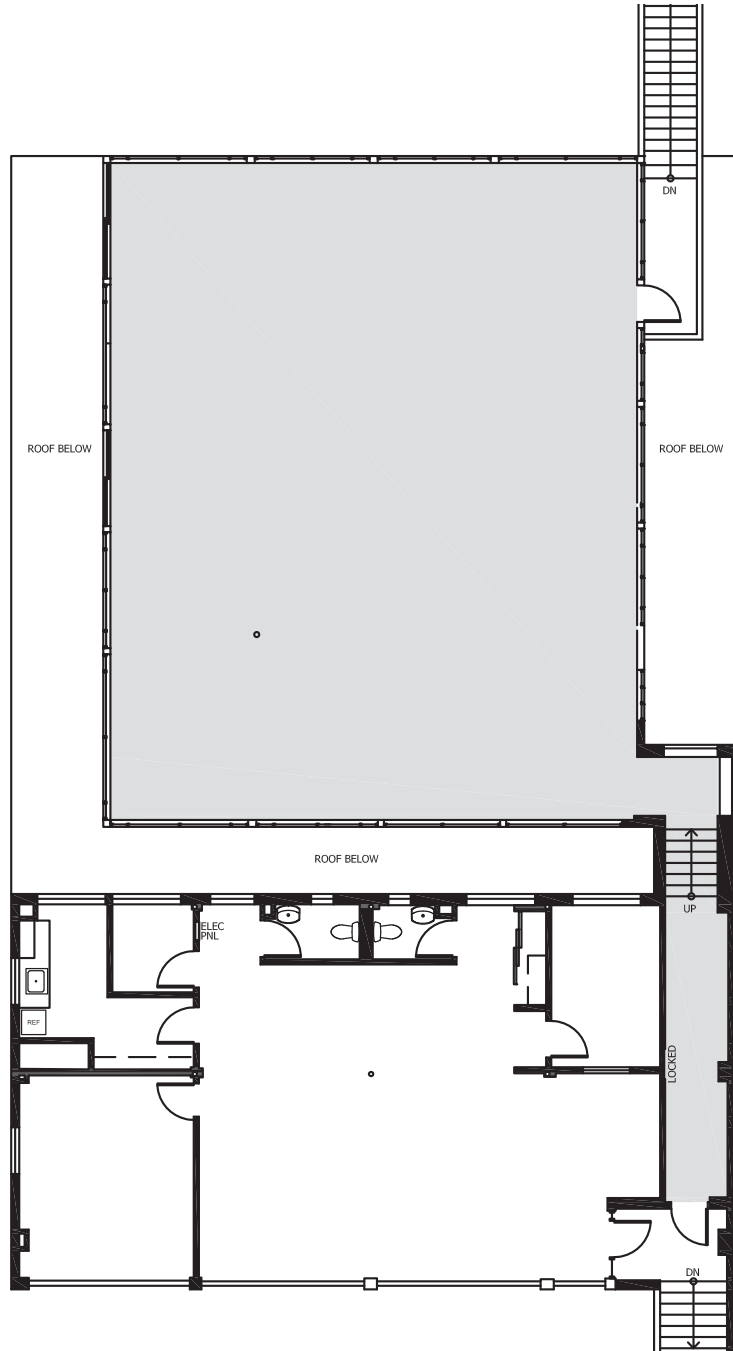
423 3rd Ave W

Seattle, WA 98119

2ND FLOOR

Rentable square feet: 1,662

Available Leased



CALL US TO SCHEDULE A TOUR | 206-467-7600 | martinselg.com